



POPE FRANCIS HIGH SCHOOL

SPRINGFIELD, MASSACHUSETTS

Architect: CBT Architects, Boston, MA
General Contractor: Fontaine Brothers, Springfield, MA
Façade Contractor: Sunrise Erectors, Canton, MA
Knight Products Used: HCI® System

Pope Francis High School in Springfield, MA, is designed as a 21st Century learning community for 450-600 students and is the merging of two Catholic high schools in the area: Cathedral High School & Holyoke Catholic High School. The former Cathedral High School was severely damaged by a tornado in 2011 and was subsequently demolished to make room for a new 117,000 square-foot school on the 30-acre site.

The school comprises one large building, along with a football stadium, practices fields for baseball and softball, tennis courts, a concessions/maintenance building and outdoor terraced seating for students. The four-level building (including lower level) includes classrooms, a makerspace lab, a 500+ seat auditorium, cafeteria, teacher workrooms, and administrative/advancement offices.

CBT Architects, the firm responsible for the new school's overall design, wanted a singular manufacturer for the rainscreen support system and chose Knight Wall Systems' HCI® System to support all rainscreen cladding on the main building.

"We liked that the entire system—vertical and horizontal supports are engineered, fasteners are part of the system, supports are heavy duty, and prefinished black was a big plus too," CBT Architects senior associate Mark Bourassa, RA LEED AP, said. "Also, the system really works well with an Oko Skin plank rainscreen, which is our primary façade finish."

Bourassa said Knight's HCI System was also used for metal panel and metal siding on other parts of the main building, gym and theater buildings.

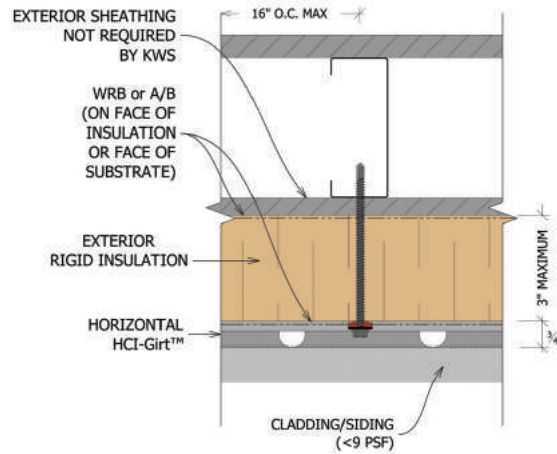
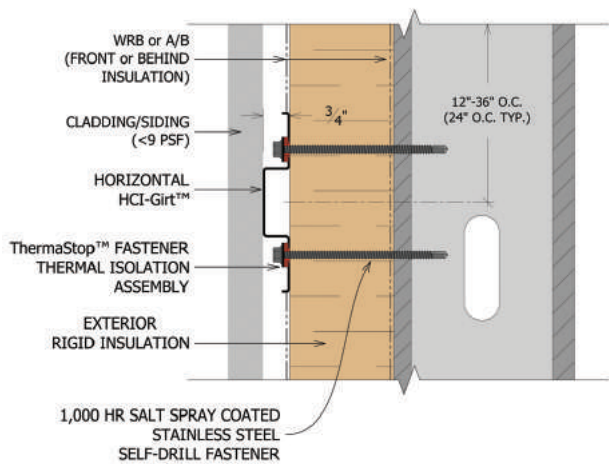
"We liked that the entire system—vertical and horizontal supports are engineered, fasteners are part of the system, supports are heavy duty"

- Andrew Campanaro
Hayes Design Group Project Manager





HCI®SYSTEM



KNIGHT WALL CAN CONTRIBUTE TO THE FOLLOWING USGBC LEED CREDITS:

- Energy & Atmosphere (EA) Prerequisite and Credit 1
- Materials & Resources (MR) Credits 4 and 5



ALL KNIGHT WALL SYSTEMS COMPONENTS ARE MANUFACTURED IN THE USA.

NO EXPRESS WARRANTIES ARE GIVEN EXCEPT FOR ANY APPLICABLE WRITTEN WARRANTIES SPECIFICALLY PROVIDED BY KNIGHT WALL SYSTEMS. ALL IMPLIED WARRANTIES INCLUDING THOSE OF MERCHANTABILITY AND FITNESS FOR A PARTICULAR PURPOSE ARE EXPRESSLY EXCLUDED. No freedom from any patent owned by Knight Wall Systems or others is to be inferred. Because use conditions and applicable laws may differ from one location to another and may change with time, Customer is responsible for determining whether products and the information in this document are appropriate for Customer's use.

KNIGHT WALL SYSTEMS

2401 E. 6th St., Deer Park, WA 99006
www.knightwallsystems.com
 1-855-597-9255 (KWS-WALL)
 509.262.0104