



HCI System Cladding Support

True Continuous Insulation for Vertical Oriented Cladding

FORMED TO PROTECT WHAT MATTERS MOST®

Knight Wall Systems® award-winning HCI system provides outstanding thermal performance by way of true ci (continuous insulation). As a compliment to the original CI® system, the HCI system enables vertical cladding (or secondary rails) to be installed directly to the HCI-GIRT. This offers easy installation, broad design flexibility, and cost savings, all while still easily meeting North American energy code requirements.

The HCI system uses unique 3/4" deep horizontal girts-called HCI-GIRT –designed to properly disburse the façade loads over exterior rigid board insulation - with only unique thermally isolated fasteners penetrating the thermal barrier thus minimizing thermal bridging.

For basic, cost-effective vertical claddings, only a single layer of HCI-GIRT may be needed. For more complex cladding designs or types, choose from a wide variety of KWS® secondary rails for those panels requiring specific attachment points.

HCI system's components are produced in standard and custom lengths, in either 16 or 18 gauge Zn-Al-Mg coated steel (standard silver or black PVDF coated) and also available in stainless steel.

HCI system completes the rainscreen envelope design, whether choosing metal panels, Aluminum Composite Material (ACM) panels, fiber cement, GFRC, or many more. And choose any brand of insulation that meets minimum compressive strength and code requirements, simplifying design specifications, including high-density mineral wool (110 series).

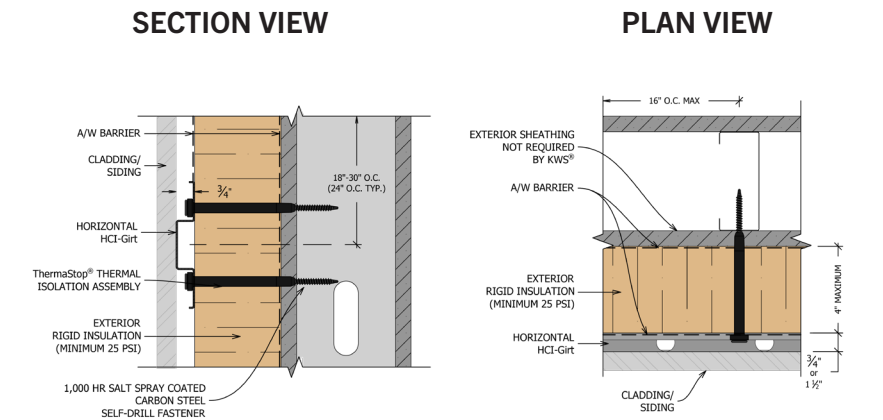


Advantages to the HCI System Rainscreen Attachment

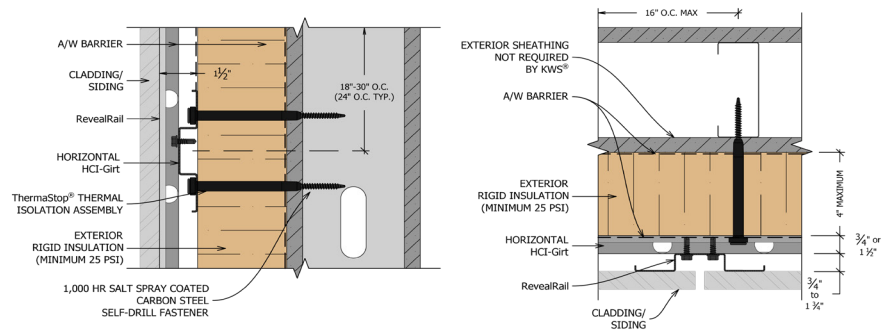
- Non-Combustible Girt and Rails
- Horizontal HCI-GIRT can be spaced from 12” up to 48” O.C.*
- Support cladding weighing up to 20 PSF*
- Real labor savings – no notching or cutting of exterior rigid insulation like with Z girts, brackets or clips
- Thermally isolated fasteners with specially designed THERMASTOP® come preassembled
- Highly corrosion resistant Zn-Al-Mg ZM40 (ASTM A1046) coated steel provides 10x the protection vs typical G90 Galvanized steel
- Black PVDF finish or stainless steel options available
- Easily installed over any type of substrate – steel studs, wood studs, CMU, concrete
- 10-year limited labor & material warranty
- Engineering calculations provide design load compliance for each specific project
- Attach nearly any type of cladding – supplied by any manufacturer – with easy and efficient detailing and installation
- Use any manufacturers insulation meeting minimum strength and other code requirements high-density mineral wool (110 series).
- Cladding can be attached directly to the horizontal HCI-GIRT or used with optional vertical rails (such as PANELRAIL®)
- Excellent ventilation with a ¾-inch minimum continuous rainscreen cavity

*Maximum allowable spacing and dead load (weight of cladding) is based on the total load (dead + live) acting on the assembly and connections. Wall anchors must be specified and supplied by KWS® for a written limited warranty. KWS will specify the exact anchor type, embedment depth and spacing for anchors in project specific engineering packages. ANKIT® fasteners with THERMASTOP® thermal isolation tubes must be used with the HCI or CI® system, no matter the substrate. Contact KWS for more information.

Horizontal HCI Girt Only



HCI Girt + RevealRail



NO EXPRESS WARRANTIES ARE GIVEN EXCEPT FOR ANY APPLICABLE WRITTEN WARRANTIES SPECIFICALLY PROVIDED BY KNIGHT WALL SYSTEMS. ALL IMPLIED WARRANTIES INCLUDING THOSE OF MERCHANTABILITY AND FITNESS FOR A PARTICULAR PURPOSE ARE EXPRESSLY EXCLUDED. No freedom from any patent owned by Knight Wall Systems or others is to be inferred. Because use conditions and applicable laws may differ from one location to another and may change with time, Customer is responsible for determining whether products and the information in this document are appropriate for Customer's use.

All content included on this site is and shall continue to be the property of Knight Wall Systems, Inc. or its content suppliers, and is protected under applicable copyright, trademark, and other proprietary rights. ANKIT, CI, CI-GIRT, KNIGHT WALL SYSTEMS, the Knight Wall Systems design mark, MFI, PANELRAIL, THERMABRACKET, THERMASTOP, THERMAZEE, and FORMED TO PROTECT WHAT MATTERS MOST are trademarks of Knight Wall Systems, Inc. US Patent Nos. 8429866, 8973334, 9677268, 9732518, 98526655, D963894, 11299891, 11286676, and others are registered and pending patents of Knight Wall Systems, Inc. These lists are not exhaustive and Knight Wall Systems, Inc. does not waive its rights in regard to other intellectual property not listed. © 2024 Knight Wall Systems, Inc. All rights reserved.



ALL KNIGHT WALL SYSTEMS COMPONENTS ARE MANUFACTURED IN THE USA.

2401 East 6th Street, Deer Park, WA 99006
www.knightwallsystems.com

1-855-597-9255 (KWS-WALL)
509-262-0104