



MFI® System Cladding Support

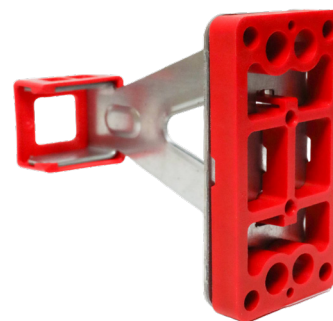
Design Without Compromise Anchored By Strength and Thermal Integrity

FORMED TO PROTECT WHAT MATTERS MOST®



KNIGHT WALL SYSTEMS® MFI® system empowers designers to push boundaries—significantly reducing thermal bridging while preserving structural strength and resilience. It delivers outstanding energy efficiency and unlimited design flexibility, so design never comes at the cost of performance.

MFI system uses unique thermally isolated intermittent steel clips – called THERMABRACKET® – that can be spaced all the way up to 48” O.C. They use a unique thermal isolation assembly, called THERMASTOP®, creating one of the most thermally efficient mineral fiber cladding support systems on the market today – typically outperforming standard metal clips and rails, even FRP.



The continuous rails attaching to the brackets may be oriented vertically or horizontally for maximum design versatility and quick installation. Quickly plumb facades during install with an adjustable rail/bracket connection or use KWS® unique, self-aligning, structural shims. The MFI system can be used with or without secondary rails for fiber cement, metal panels, terra cotta, HPL panels or Aluminum Composite Material (ACM) and many more.

THERMAL PERFORMANCE EFFICIENCY*:

MFI® SYSTEM:	91% - 84%
FIBERGLASS BRACKETS:	91% - 73%
ALUMINUM BRACKETS:	75% - 59%
HORIZONTAL Z-GIRTS:	65% - 50%
VERTICAL Z-GIRTS:	55% - 40%

*Percentage of efficiency is for illustrative purposes only, at 24” spacing & various amounts of insulation; will vary based upon exact wall assembly.

EXAMPLE U-VALUES

EXTERIOR INSULATION	ASSEMBLY U-VALUE	EFFECTIVE R-VALUE
2” (R-8.6)	0.092	10.9
3” (R-12.9)	0.070	14.3
4” (R-17.2)	0.056	18.0
5” (R-21.5)	0.047	21.2
6” (R-25.8)	0.041	24.3

Based on a typical steel stud wall with 24” bracket spacing.

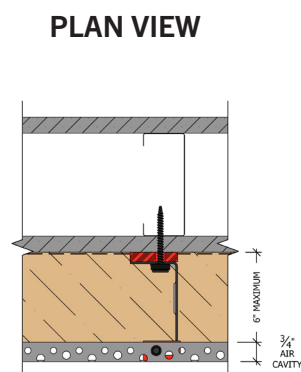
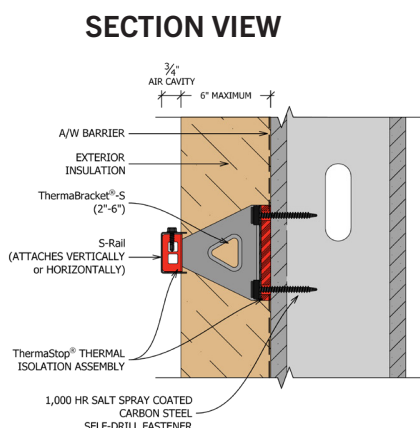
Please see KNIGHT WALL SYSTEMS 3D thermal modeling report for more information and assembly specific U-factors.

Advantages to MFI® System Cladding Support

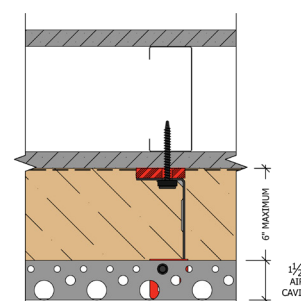
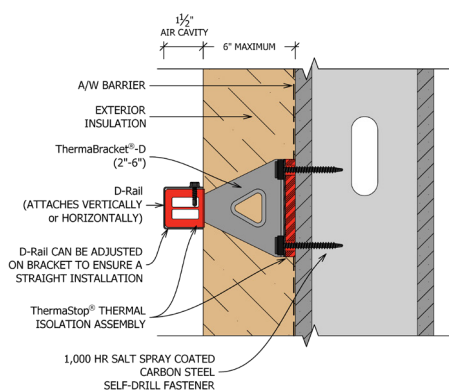
- Non-combustible clip & rails for a reliable structural connection
- THERMABRACKET® can be spaced all the way up to 48" O.C. vertically, and 16", 24" or 32" O.C.*
- Support cladding weighing up to 20 PSF*
- Quickly plumb facades during install with an adjustable rail/ bracket connection or use unique, self-aligning, structural shims
- Real labor savings – no trimming of exterior mineral fiber insulation required for a tight fit unlike other clips or brackets
- Highly corrosion resistant Zn-Al-Mg ZM40 (ASTM A1046) coated steel provides 10x the protection vs typical G90 Galvanized steel
- Black PVDF finish and stainless steel options are available
- Easily installed over any type of substrate – steel studs, wood studs, CMU, concrete
- 10-year limited labor and material warranty
- Engineering calculations provide design load compliance for each specific project
- Attach nearly any cladding – supplied by any manufacturer – with easy and efficient detailing and installation
- Use any manufacturer's mineral fiber insulation that meets code requirements
- Attach cladding directly to MFI® system rail or add optional secondary rails (such as PANELRAIL®)
- Perforated rails provide a continuously ventilated rainscreen cavity
- Pre-engineered and 3rd party tested for proven performance and durability
- Complete, drop-in rainscreen attachment system – thermally isolated steel clips, fasteners, rails and engineering – one source liability for the whole system

*Maximum allowable spacing and dead load (weight of cladding) is based on the total load (dead + live) acting on the assembly and connections. Wall anchors must be specified and supplied by KWS® for a written limited warranty. KWS will specify the exact anchor type, embedment depth and spacing for anchors when project specific engineering packages are supplied. Contact KWS for more information.

MFI® System S-SERIES



MFI® System D-SERIES



NO EXPRESS WARRANTIES ARE GIVEN EXCEPT FOR ANY APPLICABLE WRITTEN WARRANTIES SPECIFICALLY PROVIDED BY KNIGHT WALL SYSTEMS. ALL IMPLIED WARRANTIES INCLUDING THOSE OF MERCHANTABILITY AND FITNESS FOR A PARTICULAR PURPOSE ARE EXPRESSLY EXCLUDED. No freedom from any patent owned by Knight Wall Systems or others is to be inferred. Because use conditions and applicable laws may differ from one location to another and may change with time, Customer is responsible for determining whether products and the information in this document are appropriate for Customer's use.

All content included on this site is and shall continue to be the property of Knight Wall Systems, Inc. or its content suppliers, and is protected under applicable copyright, trademark, and other proprietary rights. KNIGHT WALL SYSTEMS, the Knight Wall Systems design mark, CI, CI-GIRT, THERMAZEE, MFI, THERMABRACKET, PANELRAIL, THERMASTOP, TERMGIRT, MOVEKLIP, ANKIT, KWS, INSULKEY, and FORMED TO PROTECT WHAT MATTERS MOST are trademarks of Knight Wall Systems, Inc. US Patent Nos. 8429866, 8973334, 9677268, 9732518, 9856655, 8919802, 9359029, 9206570, D649266, D963894, 11299891, 11286676 and others are registered and pending patents of Knight Wall Systems, Inc. These lists are not exhaustive and Knight Wall Systems, Inc. does not waive its rights in regard to other intellectual property not listed. © 2025 Knight Wall Systems, Inc. All rights reserved.



ALL KNIGHT WALL SYSTEMS
COMPONENTS ARE
MANUFACTURED IN THE USA.

2401 East 6th Street, Deer Park, WA 99006
www.knightwallsystems.com

1-855-597-9255 (KWS-WALL)
509-262-0104