



**THE MOST ADVANCED
THERMALLY ISOLATING
RAINSCREEN
ATTACHMENT SYSTEMS
ON THE MARKET
TODAY.**



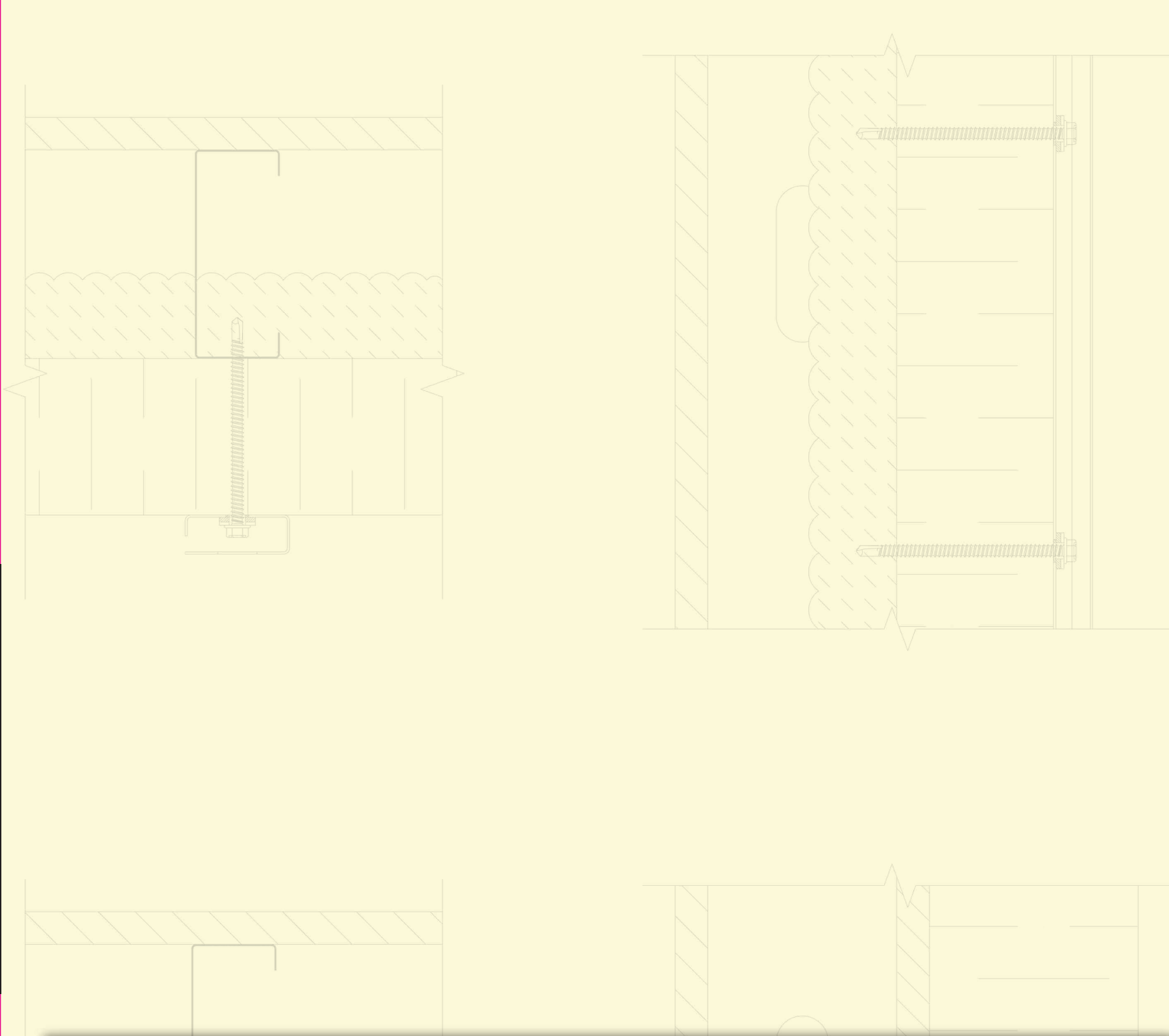
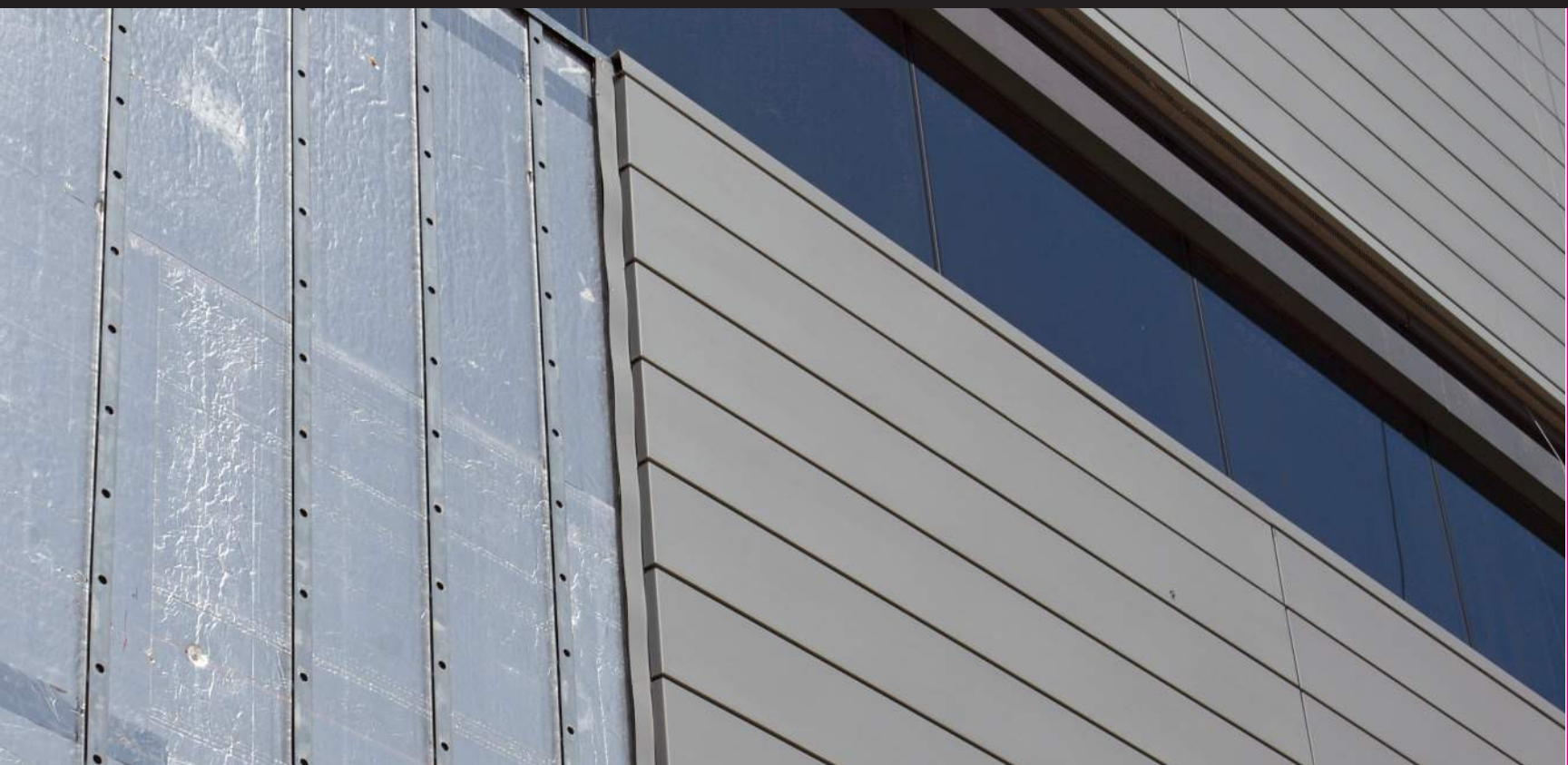
KNIGHT
WALL SYSTEMS



THE NEXUS OF YOUR BUILDING ENVELOPE.

How will you attach cladding over exterior insulation?

knightwallsystems.com



ATTACH CLADDING OVER

MINERAL FIBER INSULATION

OR

RIGID FOAM INSULATION



KNIGHT WALL CAN CONTRIBUTE TO THE FOLLOWING USGBC LEED CREDITS:

- ▣ Energy & Atmosphere (EA) Prerequisite and Credit 1
- ▣ Materials & Resources (MR) Credits 4 and 5



ALL KNIGHT WALL SYSTEMS COMPONENTS ARE MANUFACTURED IN THE USA.

CI-System, CI-Girt and MFI are registered trademarks of Knight Wall Systems, Inc. HCI-Girt, PanelRail, RevealRail, Reveal-Girt, ThermaBracket and ThermaStop are trademarks of Knight Wall Systems, Inc. Patent US 8,429,866 B2 and others pending.

KNIGHT
WALL SYSTEMS

2401 East 6th Street, Deer Park, WA 99006
www.knightwallsystems.com
1-855-597-9255 (KWS-WALL)
509.262.0104