



# KNIGHT WALL SYSTEMS® PANELRAIL®

Promises Performance Without Compromising Installation

FORMED TO PROTECT WHAT MATTERS MOST®



With better drainage and ventilation, it's a rail designed with performance, durability and the installer in mind.

KWS® offers its popular PANELRAIL® attachment rails as standalone products for use with third-party and custom support systems—making this easy-to-install technology available to the broader construction market.

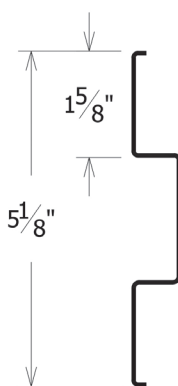
## How does PANELRAIL® work?

PANELRAIL® can be employed as a second layer of rails to help accommodate different panel layouts and sizes to add depth, and can also be used in assemblies not requiring exterior insulation, where rails are installed directly over the substrate (steel studs with gypsum sheathing, wood studs with sheathing, CMU, etc.), enabling increased air flow behind the cladding while allowing water to drain efficiently.

Pre-punched wall anchor holes make it ideal for wood and CMU substrates!

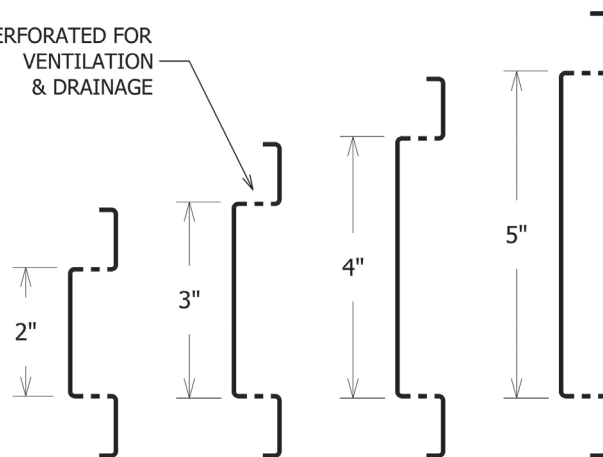
<b>Depth:</b>	0.75"   1.00"   1.25"   1.50" 1.75"   Custom
<b>Rail Width:</b>	2"   3"   4"   5"   Custom
<b>Material:</b>	ASTM A1046 Steel, ZM40, 50 ksi yield
<b>Gauge:</b>	18-ga (46 mil) or 16-ga (55 mil)
<b>Finish:</b>	Mill or PVDF Black
<b>All rails are perforated for drainage and ventilation.</b>	

## REVEALRAIL



## PANELRAIL®

PERFORATED FOR  
VENTILATION  
& DRAINAGE



# Advantages to PANELRAIL®

- Rails may be attached to substrate or other rails in a vertical or horizontal orientation.
- Standard depth range of 0.75" – 1.75" with face dimensions of 2", 3", 4" or 5".
- Regular perforation pattern means water won't accumulate and air is free to move
- Pre-punched wall anchor holes for easy installation - especially over wood and CMU/concrete substrates.
- Highly corrosion resistant Zn-Al-Mg ZM40 (ASTM A1046) coated steel provides 10x the protection vs typical G90 Galvanized steel.
- Available with a coil coated, BLACK, PVDF finish.
- Available in 18-gauge and 16-gauge.
- Project specific engineering available
- Limited 10-year warranty available
- Attach nearly any cladding with easy and efficient installation and detailing
- Wall anchors can be supplied

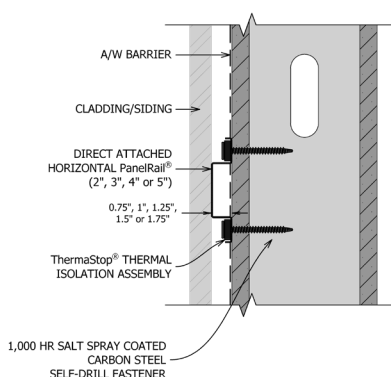
Where a typical furring channel would require a hole drilled in the field for the wall anchor, pre-punched holes on a PANELRAIL® for the wall anchors make installation simple over CMU, concrete and wood studs - saving time and cutting labor costs.

KNIGHT WALL SYSTEMS' PANELRAIL and REVEALRAIL have been typically used as a second layer of rails atop the CI® system, HCI system, MFI® system or THERMAZEE® to help accommodate different panel layouts, sizes, or add depth. Now KWS® offers the same technology for rainscreens of all types.

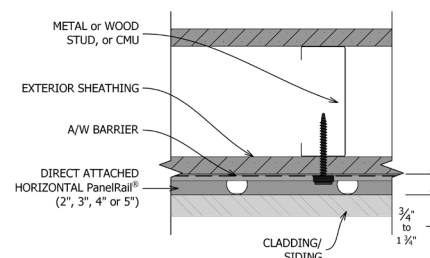


## SECTION VIEW

### PANELRAIL®



## PLAN VIEW



NO EXPRESS WARRANTIES ARE GIVEN EXCEPT FOR ANY APPLICABLE WRITTEN WARRANTIES SPECIFICALLY PROVIDED BY KNIGHT WALL SYSTEMS. ALL IMPLIED WARRANTIES INCLUDING THOSE OF MERCHANTABILITY AND FITNESS FOR A PARTICULAR PURPOSE ARE EXPRESSLY EXCLUDED. No freedom from any patent owned by Knight Wall Systems or others is to be inferred. Because use conditions and applicable laws may differ from one location to another and may change with time, Customer is responsible for determining whether products and the information in this document are appropriate for Customer's use.

All content included on this site is and shall continue to be the property of Knight Wall Systems, Inc. or its content suppliers, and is protected under applicable copyright, trademark, and other proprietary rights. ANKIT, CI, CI-GIRT, KNIGHT WALL SYSTEMS, the Knight Wall Systems design mark, MFI, PANELRAIL, THERMABRACKET, THERMASTOP, THERMAZEE, and FORMED TO PROTECT WHAT MATTERS MOST are trademarks of Knight Wall Systems, Inc. US Patent Nos. 8429866, 8973334, 9677268, 9732518, 98526655, D963894, 11299891, 11286676, and others are registered and pending patents of Knight Wall Systems, Inc. These lists are not exhaustive and Knight Wall Systems, Inc. does not waive its rights in regard to other intellectual property not listed. © 2024 Knight Wall Systems, Inc. All rights reserved.



ALL KNIGHT WALL SYSTEMS  
COMPONENTS ARE  
MANUFACTURED IN THE USA.

2401 East 6th Street, Deer Park, WA 99006  
www.knightwallsystems.com

1-855-597-9255 (KWS-WALL)  
509-262-0104