

THERMAZEE® CLADDING SUPPORT

Something Familiar...Reinvented

FORMED TO PROTECT WHAT MATTERS MOST®

KNIGHT WALL SYSTEMS® THERMAZEE® gives installers and designers the simplicity of what they know: Z-furring; with what they need: code compliant thermal performance. With reduced thermal bridging that rivals modern thermally isolated clip and rail systems, the thermally improved THERMAZEE dramatically increases the rainscreen wall assembly's performance.



4" THERMAL COMPARISON	EFFECTIVE R-VALUE
KNIGHT THERMAZEE®	R-17.3
FRP Clip & Rail System	R-15.9
Metal Z-Furring + Thermal Isolation	R-13.8
Metal Z-Furring	R-12.2

*Wall assembly compared is a 16" OC steel stud wall, 1-layer gypsum sheathing, 4" mineral wool insulation & attachments spaced at 24" O.C. Results are from 3D thermal modeling completed by Morrison-Hershfield and published product data.

THERMAZEE employs a specially designed, hollow, thermal isolation strip complimenting other performance enhancements at the web of the girt. The web's unique punch pattern has a substantial reduction in metal penetrating the insulation – about 75% – which decreases heat-flow through the girt. Additionally, the girt's notched bends and flared punches add extra strength.

Like traditional Z-furring, THERMAZEE can be installed either vertically or horizontally, attached to a variety of substrates such as steel studs, wood studs, CMU and concrete. Also, like traditional furring, a variety of claddings can be attached directly or with secondary rails. These include fiber cement, metal panels, HPL panels or aluminum composite material (ACM), among others.

THERMAZEE can be specified and purchased as a standalone girt, with or without thermally isolated wall anchors by KWS®. Additionally, KWS® can provide project-specific engineering if requested.

Advantages to THERMAZEE®

- Non-combustible girt for a reliable structural connection
- Typical installation - installs just like traditional Z-furring
- Highly perforated for Increased drainage
- Wall anchors can be supplied by KWS® or others*
- THERMAZEE® can be spaced up to 48" O.C. when used horizontally, or up to a 32" O.C. when used vertically*
- No trimming of mineral wool insulation required for a snug fit
- Pre-punched wall anchor holes for easy installation - especially over wood and CMU/concrete substrates
- Highly corrosion resistant Zn-Al-Mg ZM40 (ASTM A1046) coated steel provides 10x the protection vs typical G90 Galvanized steel
- Black PVDF finish and stainless-steel options available
- Delivered with preassembled thermal isolation strip - ready to install
- Easily installed over many substrates - steel studs, wood studs, CMU, concrete
- Engineering calculations can be provided per project for design load compliance (optional)
- Can be supplied as a full support solution - thermally isolated furring, fasteners, secondary rails and engineering (optional)
- 10-year limited labor & material warranty

Options

DEPTHS: 1 ½ in · 2 in · 2 ½ in · 3 in · 3 ½ in · 4 in · 4 ½ in · 5 in

FINISH: Mill or Black PVDF

GAUGES: 18-GA or 16-GA

LENGTHS: 120 in Standard (96 in Available)

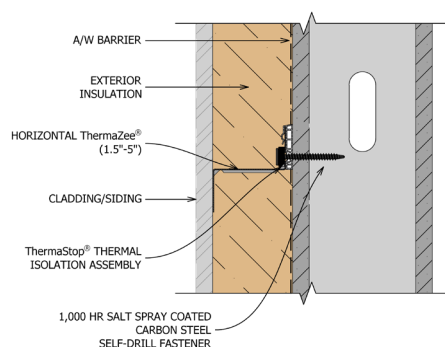
Contact KWS® for more information on lead times and pricing. See system specific guide details for further information on design, detailing and installation.

*Maximum allowable spacing and dead load (weight of cladding) is based on the total load (dead + live) acting on the assembly and connections. Engineering should verify this. Engineering and wall anchors must be supplied by KWS for a written limited extended warranty.

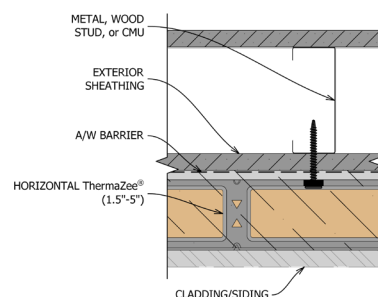


SECTION VIEW

THERMAZEE®



PLAN VIEW



NO EXPRESS WARRANTIES ARE GIVEN EXCEPT FOR ANY APPLICABLE WRITTEN WARRANTIES SPECIFICALLY PROVIDED BY KNIGHT WALL SYSTEMS. ALL IMPLIED WARRANTIES INCLUDING THOSE OF MERCHANTABILITY AND FITNESS FOR A PARTICULAR PURPOSE ARE EXPRESSLY EXCLUDED. No freedom from any patent owned by Knight Wall Systems or others is to be inferred. Because use conditions and applicable laws may differ from one location to another and may change with time, Customer is responsible for determining whether products and the information in this document are appropriate for Customer's use.

All content included on this site is and shall continue to be the property of Knight Wall Systems, Inc. or its content suppliers, and is protected under applicable copyright, trademark, and other proprietary rights. ANKIT, CI, CI-GIRT, KNIGHT WALL SYSTEMS, the Knight Wall Systems design mark, MFI, PANELRAIL, THERMABRACKET, THERMASTOP, THERMAZEE, and FORMED TO PROTECT WHAT MATTERS MOST are trademarks of Knight Wall Systems, Inc. US Patent Nos. 8429866, 8973334, 9677268, 9732518, 98526655, D963894, 11299891, 11286676, and others are registered and pending patents of Knight Wall Systems, Inc. These lists are not exhaustive and Knight Wall Systems, Inc. does not waive its rights in regard to other intellectual property not listed. © 2024 Knight Wall Systems, Inc. All rights reserved.



ALL KNIGHT WALL SYSTEMS
COMPONENTS ARE
MANUFACTURED IN THE USA.

2401 East 6th Street, Deer Park, WA 99006
www.knightwallsystems.com

1-855-597-9255 (KWS-WALL)
509-262-0104