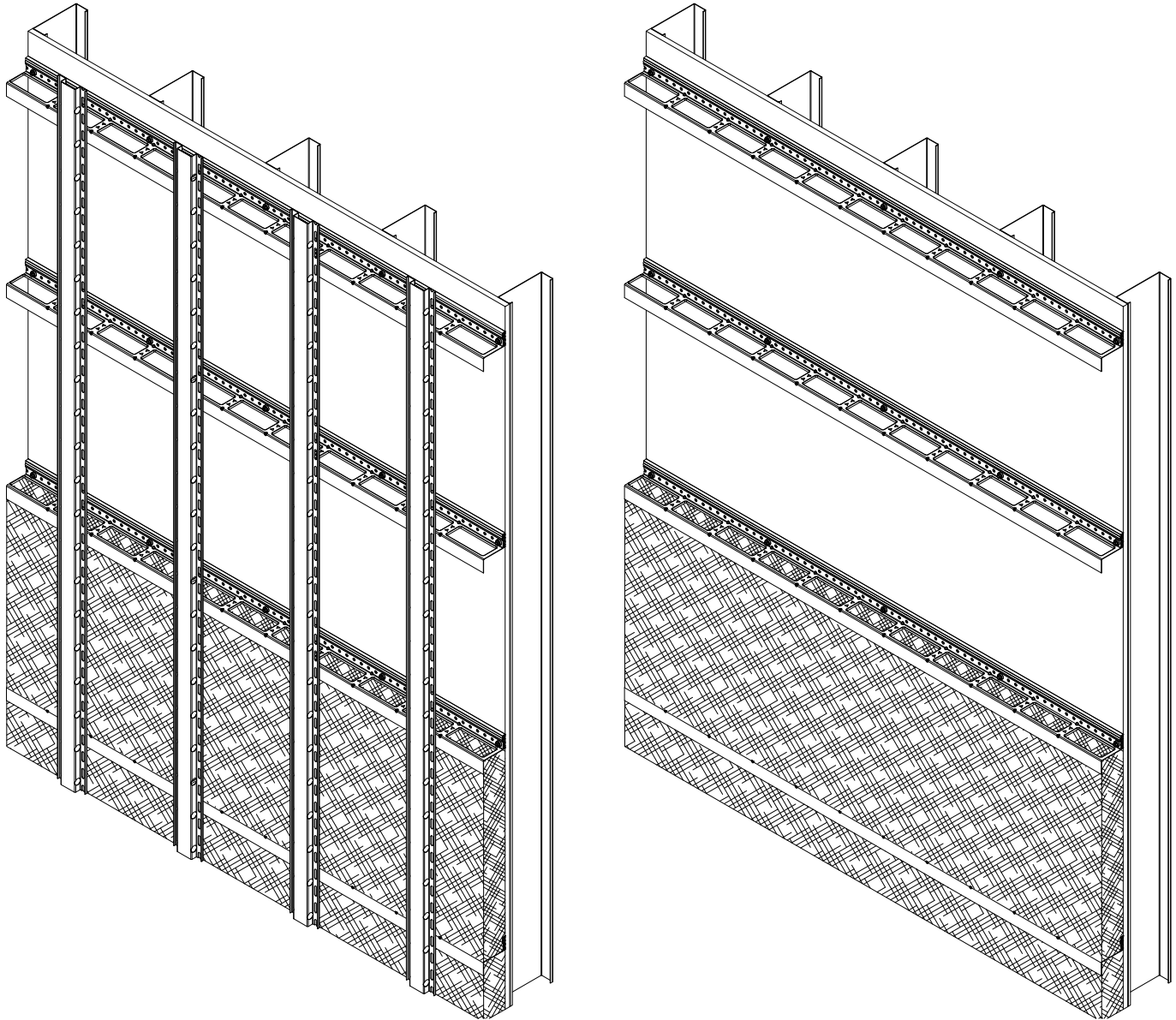


KNIGHT WALL SYSTEMS GUIDE DETAILS:

ThermaZee™ (HORIZONTAL)

RAINSCREEN ATTACHMENT for CLADDING PANELS



HORIZONTAL ORIENTED SYSTEM

ThermaZee MINIMUM DEPTH: 1.5 INCHES

ThermaZee MAXIMUM DEPTH: 4.5 INCHES

(FACE OF SHEATHING TO FACE OF ThermaZee)

QUICK LINK: [SECTION VIEW](#) [PLAN VIEW](#)

07/15/2020

THESE GUIDE DETAILS ARE PROVIDED FOR INFORMATION ONLY AND OUTLINE GENERAL/TYPICAL REQUIREMENTS FOR THE ATTACHMENT SYSTEM. PROJECT SPECIFIC ENGINEERING IS AVAILABLE TO ADDRESS STRUCTURAL ATTACHMENT (i.e. FASTENING PATTERN, ETC.). CONTACT KWS FOR FURTHER DETAILS. **ALL IMPLIED WARRANTIES INCLUDING MERCHANTABILITY & FITNESS FOR A PARTICULAR PURPOSE ARE EXPRESSLY EXCLUDED.**

www.knightwallsystems.com

© Knight Wall Systems Deer Park, WA - 1.855.KWS.WALL

PATENT US 8,429,866 B2, OTHERS PENDING - Drawn by: BN



KNIGHT ThermaZee™
(HORIZONTAL ORIENTATION)
RAINSCREEN ATTACHMENT

GENERAL NOTES:

- KNIGHT WALL SYSTEMS (KWS) IS NOT RESPONSIBLE FOR INFORMATION SHOWN ON ALL DETAILS BEYOND KWS SPECIFIC SCOPE OF WORK QUOTED AND AS INDICATED ON CONTRACT DOCUMENTS.
- SYSTEM MAY BE INSTALLED OVER STEEL STUDS, WOOD STUDS, CMU OR CONCRETE SUBSTRATES (WITH USE OF APPROPRIATE WALL ANCHORS).
- PROJECT SPECIFIC ENGINEERING CAN BE PROVIDED BY KWS AND IS REQUIRED FOR A 10 YEAR LIMITED WRITTEN WARRANTY.
- KWS PROJECT SPECIFIC ENGINEERING, IF SUPPLIED, IS LIMITED TO THE LOAD CARRYING COMPONENTS OF THE PRODUCTS AND FASTENERS SUPPLIED BY KWS. THE BACK-UP WALL, WALL CLADDING PANELS AND/OR RAILS SUPPLIED BY OTHERS ARE WITH OTHER PARTIES.
- PLEASE READ OUR INSTALLATION AND DESIGN RECOMMENDATIONS DOCUMENT FOR FURTHER INFORMATION THAT IS IMPORTANT FOR YOUR SPECIFIC PROJECT AND PROPER INSTALLATION.
- DETAILS OF ADJACENT WORK ARE SHOWN FOR COMPLETENESS, CLARITY AND CONVENIENCE AS AN EXAMPLE OF A BUILT ENVIRONMENT ONLY.
- THE STRUCTURAL SUPPORT, BACK-UP WALL AND SUPER STRUCTURE DESIGN IS WITH OTHER PARTIES (SUCH AS, BUT NOT LIMITED TO, STEEL STUD WALL, etc.). THE RESPONSIBILITY FOR THESE OTHER ASSEMBLIES TO ACCOMMODATE ALL LOADS IMPOSED UPON THEM BY KWS PRODUCTS, OR ANY ATTACHMENT OR PANEL SYSTEM, SHOULD BE CONSIDERED.
- SOFT JOINTS, SEALANT AND FLASHING SPECIFICATIONS, DESIGN AND INSTALLATION ARE WITH OTHER PARTIES.
- WEATHER RESISTANT/AIR BARRIER AND INSULATION SPECIFICATIONS, DETAILING AND INSTALLATION, INCLUDING PENETRATIONS, ARE WITH OTHER PARTIES.
- INTERACTION BETWEEN DISSIMILAR MATERIALS, SUCH AS ALUMINUM AND STEEL, CAN BE SEPARATED VIA PLASTIC SHIMS, TAPE OR COATING TO PREVENT GALVANIC REACTION.
- USE SHEARING INSTRUMENTS FOR CUTTING METAL FRAMING COMPONENTS. SAWS ARE NOT RECOMMENDED, AS THE SPARKS PRODUCED DURING CUTTING WILL DAMAGE THE ANTI-CORROSION COATING. IF SPARKS ARE GENERATED DURING CUTTING, BE SURE THE PORTION OF THE COMPONENT TO BE INSTALLED ON THE BUILDING IS PROTECTED FROM SPARKS. THE SYSTEMS COMPONENTS MUST NOT BE CUT WHILE INSTALLED ON THE BUILDING UNLESS USING A SHEARING INSTRUMENT (I.E. SNIPS, etc.).
- USE OF IMPACT DRIVERS IS NOT RECOMMENDED WHEN DRIVING ANY FASTENER FOR THE SYSTEM.
- EXTERIOR INSULATION IS RECOMMENDED TO BE MINERAL FIBER INSULATION (MFI) FOR USE WITH THE ThermaZee. RIGID FOAM INSULATION MAY BE USED, BUT IS NOT RECOMMENDED DUE TO THERMAL ISOLATION BASE DESIGN AND EXCESS LABOR FOR TRIMMING OR CUTTING OF RIGID FOAM. MINERAL FIBER INSULATION DOES NOT TYPICALLY REQUIRE ANY CUTTING AROUND THE BASE FOR PROPER INSTALLATION.
- ThermaZee, RevealRail, PanelRail and ThermaStop are trademarks of Knight Wall Systems, inc.
- THE DETAILS WITHIN THIS DRAWING PACKAGE ARE NOT INTENDED TO REPLACE PROJECT SPECIFIC ENGINEERING CALCULATIONS OR THE DESIGN SERVICES OF A REGISTERED PROFESSIONAL DESIGNER AND ARE SUBJECT TO CHANGE AT ANY TIME.

NOTICE: No freedom from any patent owned by Knight Wall Systems or others is to be inferred. Because use conditions and applicable laws may differ from one location to another and may change with time, Customer is responsible for determining whether products and the information in this document are appropriate for Customer's use and for ensuring that Customer's workplace and disposal practices are in compliance with applicable laws and other government enactments. Knight Wall Systems assumes no obligation or liability for the information in this document. **NO EXPRESS WARRANTIES ARE GIVEN EXCEPT FOR ANY APPLICABLE WRITTEN LIMITED WARRANTIES SPECIFICALLY PROVIDED BY KNIGHT WALL SYSTEMS. ALL IMPLIED WARRANTIES INCLUDING THOSE OF MERCHANTABILITY AND FITNESS FOR A PARTICULAR PURPOSE ARE EXPRESSLY EXCLUDED.** Building and/or construction practices unrelated to building materials could greatly affect moisture and the potential for mold formation. No material supplier including Knight Wall Systems can give assurance that mold will not develop in any specific system.

07/152020

THESE GUIDE DETAILS ARE PROVIDED FOR INFORMATION ONLY AND OUTLINE GENERAL/TYPICAL REQUIREMENTS FOR THE ATTACHMENT SYSTEM. PROJECT SPECIFIC ENGINEERING IS AVAILABLE TO ADDRESS STRUCTURAL ATTACHMENT (i.e. FASTENING PATTERN, ETC.). CONTACT KWS FOR FURTHER DETAILS. **ALL IMPLIED WARRANTIES INCLUDING MERCHANTABILITY & FITNESS FOR A PARTICULAR PURPOSE ARE EXPRESSLY EXCLUDED.**
www.knightwallsystems.com
© Knight Wall Systems Deer Park, WA - 1.855.KWS.WALL
PATENT US 8,429,866 B2, OTHERS PENDING - Drawn by: BN



KNIGHT ThermaZee™
(HORIZONTAL ORIENTATION)
RAINSCREEN ATTACHMENT

TABLE OF CONTENTS:

1. TITLE PAGE
2. GENERAL NOTES
3. TABLE OF CONTENTS
4. ISOMETRIC VIEW OF ThermaZee™ ASSEMBLY
5. 1.5"-2.5" ThermaZee OVERALL DIMENSIONS
6. 3"-4.5" ThermaZee OVERALL DIMENSIONS
7. TYPICAL SECTION VIEW - HORIZONTAL ThermaZee ONLY
8. TYPICAL PLAN VIEW - HORIZONTAL ThermaZee ONLY
9. TYPICAL OUTSIDE CORNER - HORIZONTAL ThermaZee ONLY
10. TYPICAL INSIDE CORNER - HORIZONTAL ThermaZee ONLY
11. TYPICAL JAMB CONDITION - HORIZONTAL ThermaZee ONLY
12. TYPICAL HEAD/SILL CONDITION - HORIZONTAL ThermaZee ONLY
13. TYPICAL BASE OF WALL - HORIZONTAL ThermaZee ONLY
14. TYPICAL DEFLECTION FLOOR JOINT - HORIZONTAL ThermaZee ONLY
15. TYPICAL SECTION VIEW - HORIZONTAL ThermaZee + VERTICAL PanelRail
16. TYPICAL PLAN VIEW - HORIZONTAL ThermaZee + VERTICAL PanelRail
17. TYPICAL OUTSIDE CORNER - HORIZONTAL ThermaZee + VERTICAL PanelRail
18. TYPICAL INSIDE CORNER - HORIZONTAL ThermaZee + VERTICAL PanelRail
19. TYPICAL JAMB CONDITION - HORIZONTAL ThermaZee + VERTICAL PanelRail
20. TYPICAL HEAD/SILL CONDITION - HORIZONTAL ThermaZee + VERTICAL PanelRail
21. TYPICAL BASE OF WALL - HORIZONTAL ThermaZee + VERTICAL PanelRail
22. TYPICAL DEFLECTION FLOOR JOINT - HORIZONTAL ThermaZee + VERTICAL PanelRail

PLEASE FEEL FREE TO CONTACT KWS OR A LOCAL KWS REPRESENTATIVE FOR PROJECT SPECIFIC ASSISTANCE WITH DETAILS AND SPECIFYING.

1.855.KWS.WALL

info@knightwallsystems.com

www.knightwallsystems.com

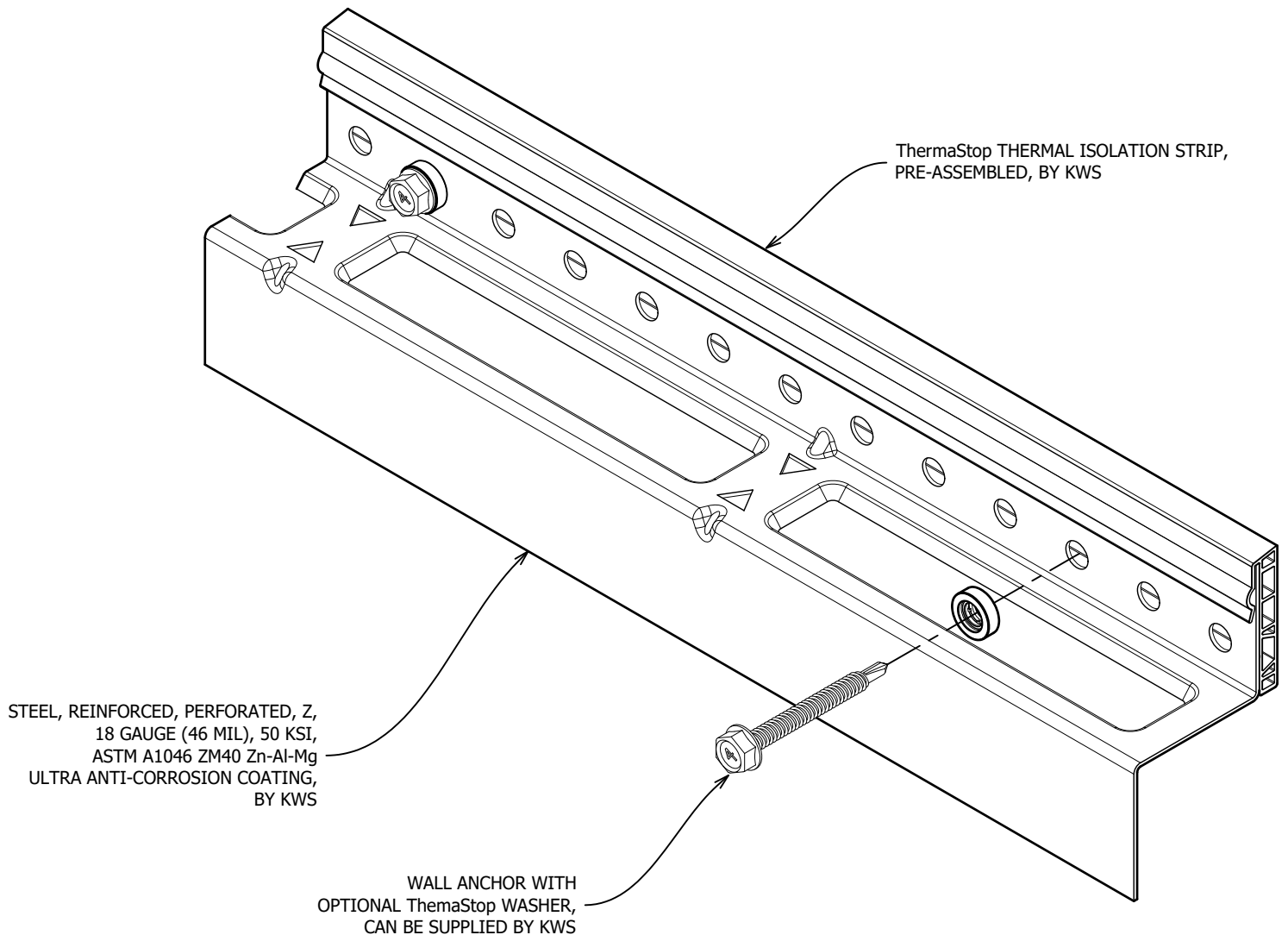
07/15/2020

THESE GUIDE DETAILS ARE PROVIDED FOR INFORMATION ONLY AND OUTLINE GENERAL/TYPICAL REQUIREMENTS FOR THE ATTACHMENT SYSTEM. PROJECT SPECIFIC ENGINEERING IS AVAILABLE TO ADDRESS STRUCTURAL ATTACHMENT (i.e. FASTENING PATTERN, ETC.). CONTACT KWS FOR FURTHER DETAILS. **ALL IMPLIED WARRANTIES INCLUDING MERCHANTABILITY & FITNESS FOR A PARTICULAR PURPOSE ARE EXPRESSLY EXCLUDED.**

www.knightwallsystems.com
© Knight Wall Systems Deer Park, WA - 1.855.KWS.WALL
PATENT US 8,429,866 B2, OTHERS PENDING - Drawn by: BN



KNIGHT ThermaZee™
(HORIZONTAL ORIENTATION)
RAINSCEEN ATTACHMENT



*16 GAUGE RAILS, FACTORY BLACK COATED RAILS & STAINLESS STEEL (304) AVAILABLE

*MAXIMUM ALLOWABLE SPACING AND DEAD LOAD (WEIGHT OF CLADDING) IS BASED ON THE TOTAL LOAD (DEAD + LIVE) ACTING ON THE ASSEMBLY, BRACKETS AND CONNECTIONS.

4

ThermaZee ASSEMBLY - ISO VIEW

SCALE: 3" = 1'-0"

[BACK TO TABLE OF CONTENTS](#)

07/15/2020

THESE GUIDE DETAILS ARE PROVIDED FOR INFORMATION ONLY AND OUTLINE GENERAL/TYPICAL REQUIREMENTS FOR THE ATTACHMENT SYSTEM. PROJECT SPECIFIC ENGINEERING IS AVAILABLE TO ADDRESS STRUCTURAL ATTACHMENT (i.e. FASTENING PATTERN, ETC.). CONTACT KWS FOR FURTHER DETAILS. **ALL IMPLIED WARRANTIES INCLUDING MERCHANTABILITY & FITNESS FOR A PARTICULAR PURPOSE ARE EXPRESSLY EXCLUDED.**

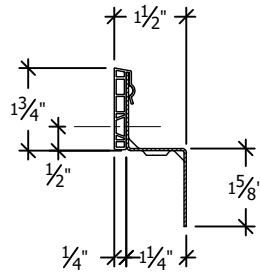
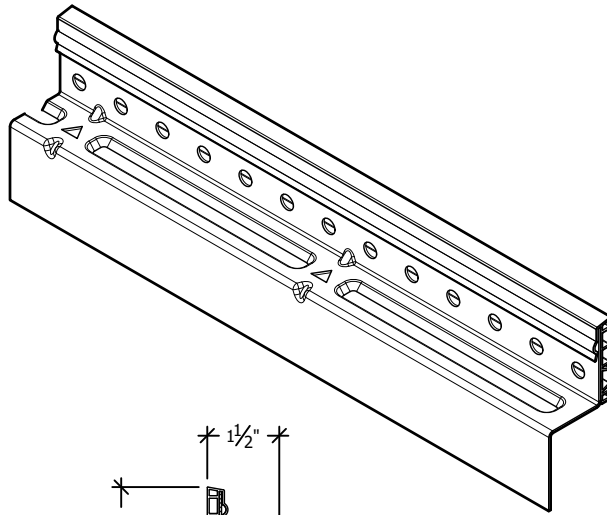
www.knightwallsystems.com

© Knight Wall Systems Deer Park, WA - 1.855.KWS.WALL

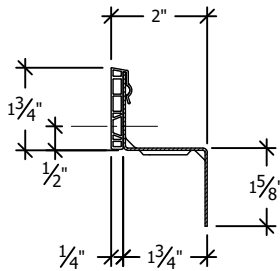
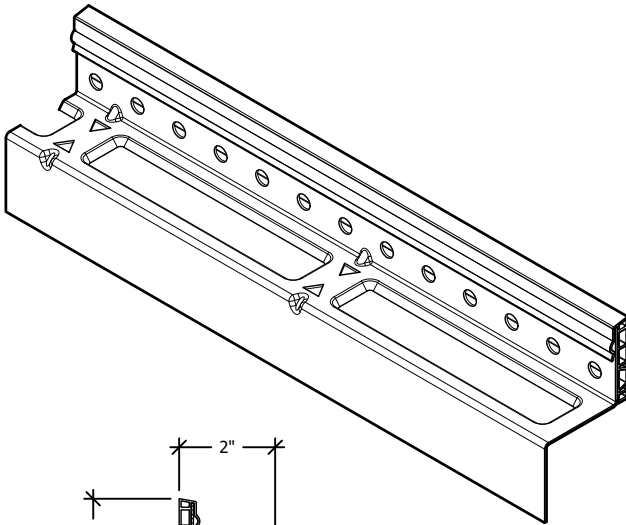
PATENT US 8,429,866 B2, OTHERS PENDING - Drawn by: BN & MW



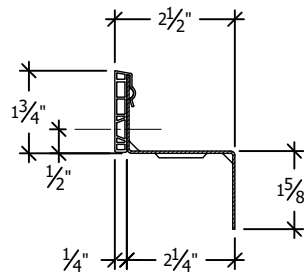
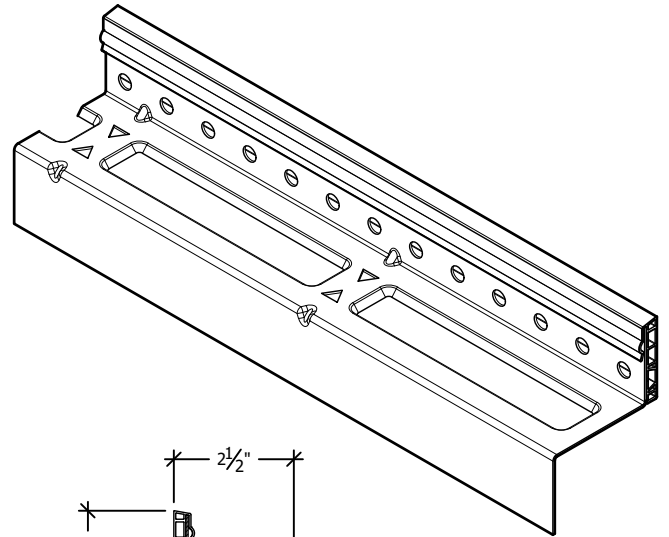
KNIGHT ThermaZee™
(HORIZONTAL ORIENTATION)
RAINSCREEN ATTACHMENT



1.5" ThermaZee



2.0" ThermaZee



2.5" ThermaZee

*16 GAUGE RAILS, FACTORY BLACK COATED RAILS & STAINLESS STEEL (304) AVAILABLE

*MAXIMUM ALLOWABLE SPACING AND DEAD LOAD (WEIGHT OF CLADDING) IS BASED ON THE TOTAL LOAD (DEAD + LIVE) ACTING ON THE ASSEMBLY, BRACKETS AND CONNECTIONS.



ThermaZee SIZES - 1.5"-2.5"

SCALE: 3" = 1'-0"

[BACK TO TABLE OF CONTENTS](#)

07/15/2020

THESE GUIDE DETAILS ARE PROVIDED FOR INFORMATION ONLY AND OUTLINE GENERAL/TYPICAL REQUIREMENTS FOR THE ATTACHMENT SYSTEM. PROJECT SPECIFIC ENGINEERING IS AVAILABLE TO ADDRESS STRUCTURAL ATTACHMENT (i.e. FASTENING PATTERN, ETC.). CONTACT KWS FOR FURTHER DETAILS. **ALL IMPLIED WARRANTIES INCLUDING MERCHANTABILITY & FITNESS FOR A PARTICULAR PURPOSE ARE EXPRESSLY EXCLUDED.**

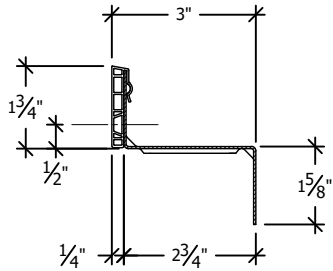
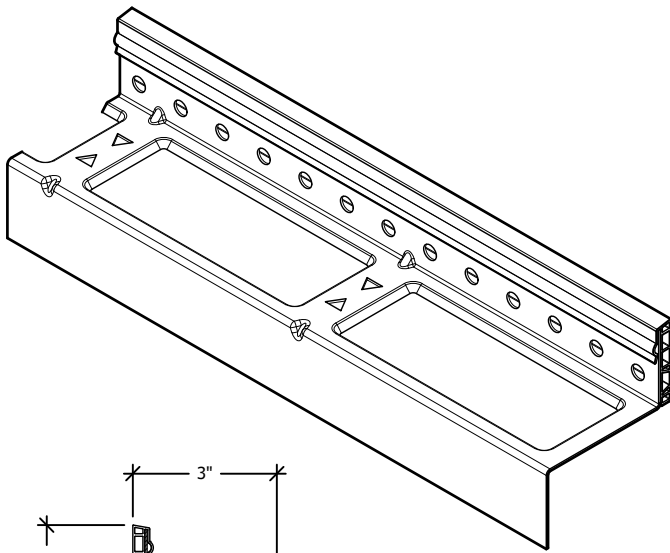
www.knightwallsystems.com

© Knight Wall Systems Deer Park, WA - 1.855.KWS.WALL

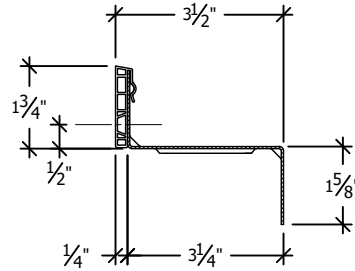
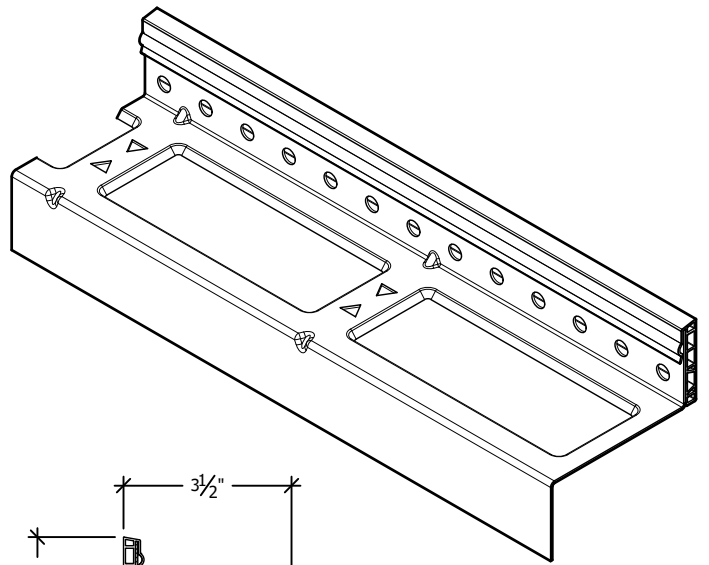
PATENT US 8,429,866 B2, OTHERS PENDING - Drawn by: BN & MW



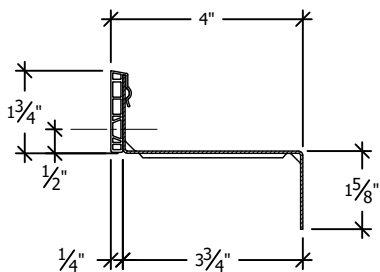
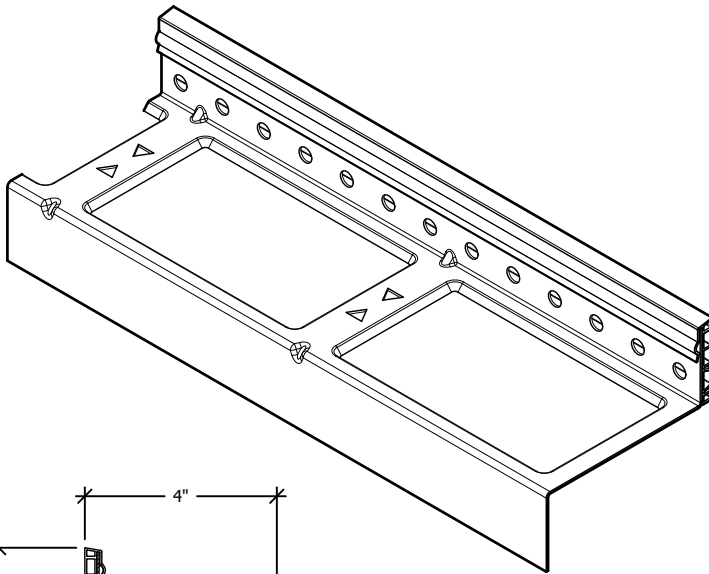
KNIGHT ThermaZee™
(HORIZONTAL ORIENTATION)
RAINSCREEN ATTACHMENT



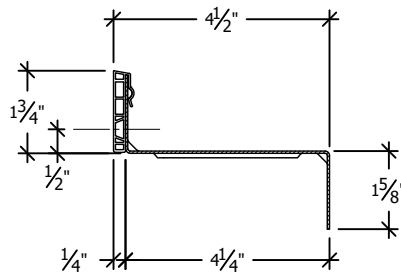
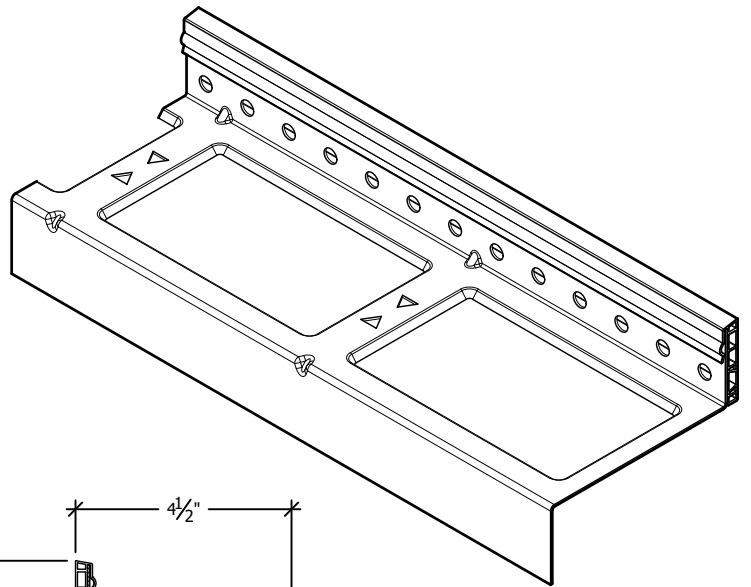
3.0" ThermaZee



3.5" ThermaZee



4.0" ThermaZee



4.5" ThermaZee

*16 GAUGE RAILS, FACTORY BLACK COATED RAILS & STAINLESS STEEL (304) AVAILABLE

*MAXIMUM ALLOWABLE SPACING AND DEAD LOAD (WEIGHT OF CLADDING) IS BASED ON THE TOTAL LOAD (DEAD + LIVE) ACTING ON THE ASSEMBLY, BRACKETS AND CONNECTIONS.

6

ThermaZee SIZES - 3"-4.5"

SCALE: 3" = 1'-0"

[BACK TO TABLE OF CONTENTS](#)

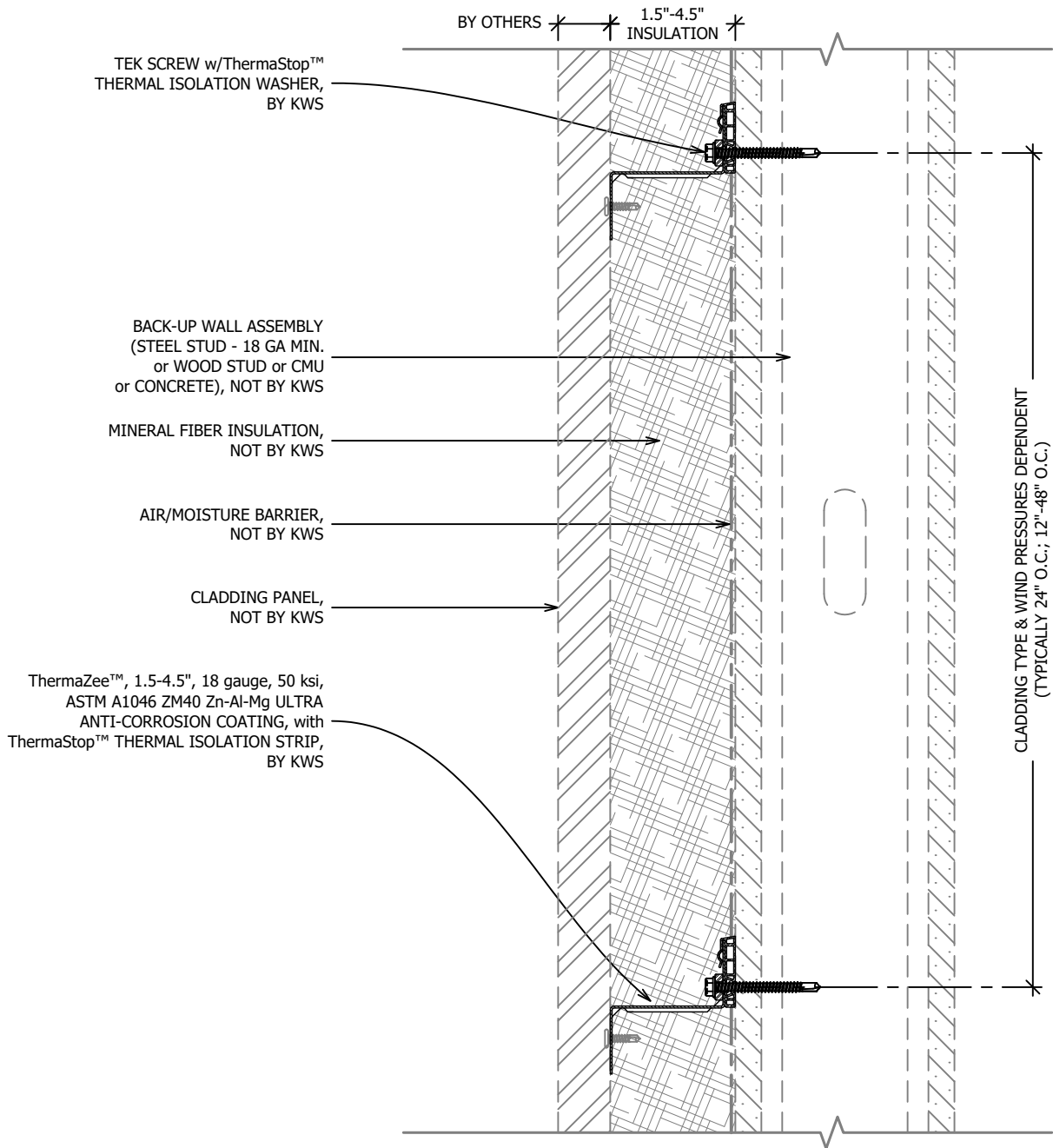
07/15/2020

THESE GUIDE DETAILS ARE PROVIDED FOR INFORMATION ONLY AND OUTLINE GENERAL/TYPICAL REQUIREMENTS FOR THE ATTACHMENT SYSTEM. PROJECT SPECIFIC ENGINEERING IS AVAILABLE TO ADDRESS STRUCTURAL ATTACHMENT (i.e. FASTENING PATTERN, ETC.). CONTACT KWS FOR FURTHER DETAILS. **ALL IMPLIED WARRANTIES INCLUDING MERCHANTABILITY & FITNESS FOR A PARTICULAR PURPOSE ARE EXPRESSLY EXCLUDED.**

www.knightwallsystems.com
© Knight Wall Systems Deer Park, WA - 1.855.KWS.WALL
PATENT US 8,429,866 B2, OTHERS PENDING - Drawn by: BN & MW



KNIGHT ThermaZee™
(HORIZONTAL ORIENTATION)
RAINSCREEN ATTACHMENT



SYSTEM MAY BE INSTALLED OVER STEEL STUDS,
WOOD STUDS, CMU OR CONCRETE SUBSTRATES
(WITH USE OF APPROPRIATE WALL ANCHORS).

*16 GAUGE RAILS, FACTORY BLACK COATED RAILS & STAINLESS STEEL
(304) AVAILABLE

*MAXIMUM ALLOWABLE SPACING AND DEAD LOAD (WEIGHT OF
CLADDING) IS BASED ON THE TOTAL LOAD (DEAD + LIVE) ACTING ON THE
ASSEMBLY, BRACKETS AND CONNECTIONS.

7 TYPICAL SECTION VIEW - ThermaZee ONLY

SCALE: 3" = 1'-0"

[BACK TO TABLE OF CONTENTS](#)

07/15/2020

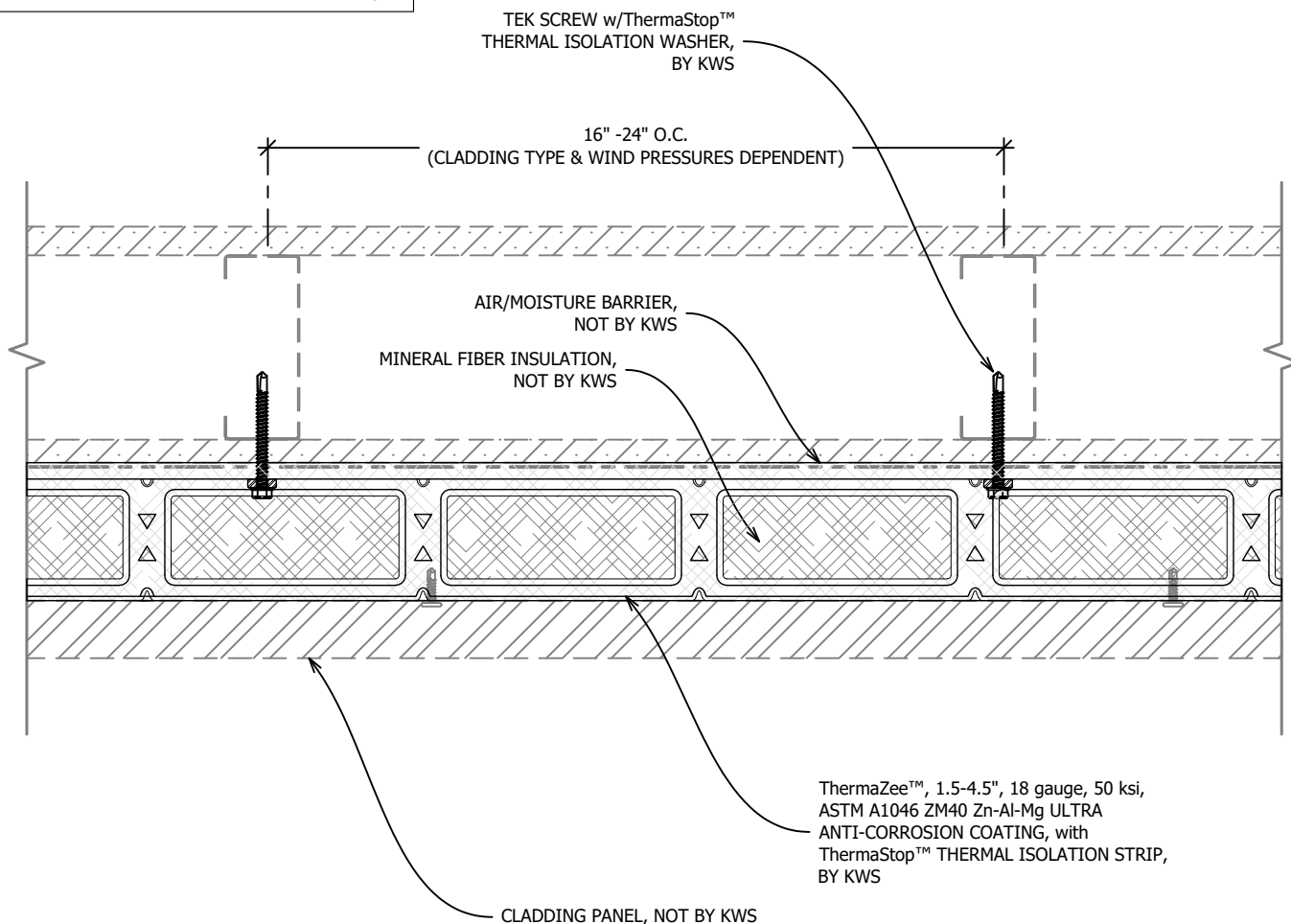
THESE GUIDE DETAILS ARE PROVIDED FOR INFORMATION ONLY
AND OUTLINE GENERAL/TYPICAL REQUIREMENTS FOR THE
ATTACHMENT SYSTEM. PROJECT SPECIFIC ENGINEERING IS
AVAILABLE TO ADDRESS STRUCTURAL ATTACHMENT (i.e.
FASTENING PATTERN, ETC.). CONTACT KWS FOR FURTHER
DETAILS. **ALL IMPLIED WARRANTIES INCLUDING
MERCHANTABILITY & FITNESS FOR A PARTICULAR
PURPOSE ARE EXPRESSLY EXCLUDED.**

www.knightwallsystems.com
© Knight Wall Systems Deer Park, WA - 1.855.KWS.WALL
PATENT US 8,429,866 B2, OTHERS PENDING - Drawn by: BN



**KNIGHT ThermaZee™
(HORIZONTAL ORIENTATION)
RAINSCREEN ATTACHMENT**

SYSTEM MAY BE INSTALLED OVER STEEL STUDS,
WOOD STUDS, CMU OR CONCRETE SUBSTRATES
(WITH USE OF APPROPRIATE WALL ANCHORS).



*16 GAUGE RAILS, FACTORY BLACK COATED RAILS & STAINLESS STEEL
(304) AVAILABLE

*MAXIMUM ALLOWABLE SPACING AND DEAD LOAD (WEIGHT OF
CLADDING) IS BASED ON THE TOTAL LOAD (DEAD + LIVE) ACTING ON THE
ASSEMBLY, BRACKETS AND CONNECTIONS.

8

TYPICAL PLAN VIEW - ThermaZee ONLY

SCALE: 3" = 1'-0"

[BACK TO TABLE OF CONTENTS](#)

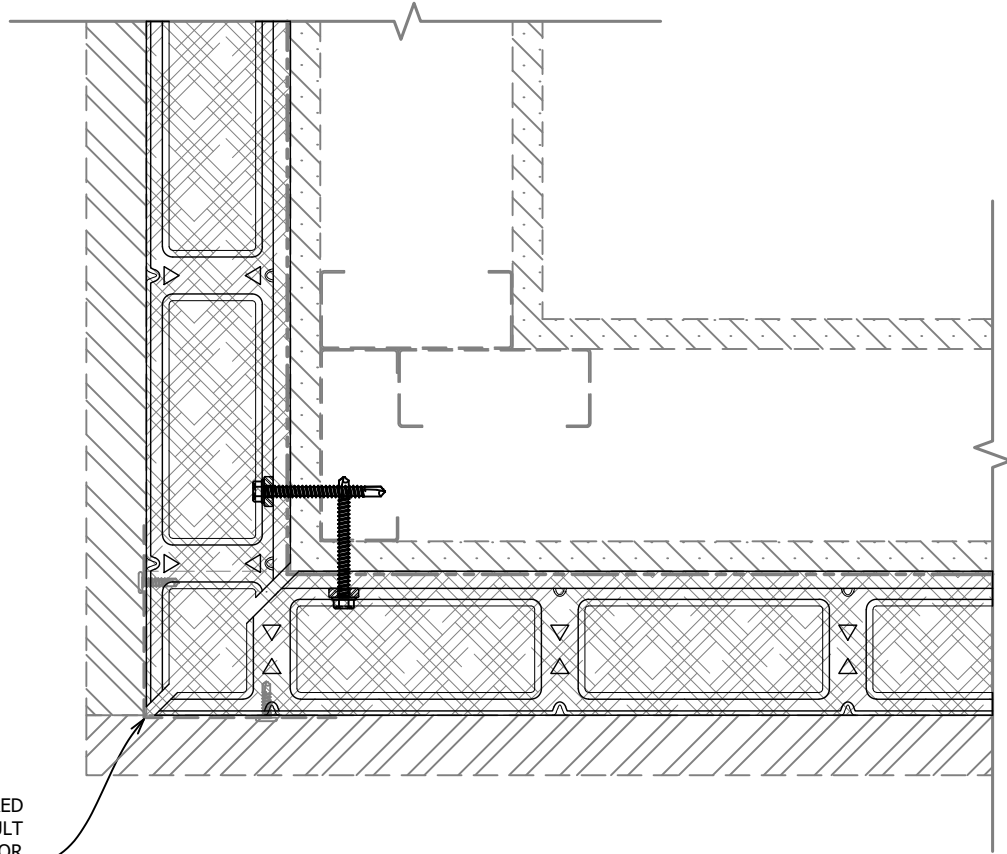
07/15/2020

THESE GUIDE DETAILS ARE PROVIDED FOR INFORMATION ONLY
AND OUTLINE GENERAL/TYPICAL REQUIREMENTS FOR THE
ATTACHMENT SYSTEM. PROJECT SPECIFIC ENGINEERING IS
AVAILABLE TO ADDRESS STRUCTURAL ATTACHMENT (i.e.
FASTENING PATTERN, ETC.). CONTACT KWS FOR FURTHER
DETAILS. **ALL IMPLIED WARRANTIES INCLUDING
MERCHANTABILITY & FITNESS FOR A PARTICULAR
PURPOSE ARE EXPRESSLY EXCLUDED.**

www.knightwallsystems.com
© Knight Wall Systems Deer Park, WA - 1.855.KWS.WALL
PATENT US 8,429,866 B2, OTHERS PENDING - Drawn by: BN



KNIGHT ThermaZee™
(HORIZONTAL ORIENTATION)
RAINSCREEN ATTACHMENT



BACKING ('L') MAY BE REQUIRED
AT OUTSIDE CORNER. CONSULT
CLADDING MANUFACTURER FOR
DETAILS & REQUIREMENTS.
THIS IS NOT REQUIRED OR
SUPPLIED BY KWS.

*16 GAUGE RAILS, FACTORY BLACK COATED RAILS & STAINLESS STEEL
(304) AVAILABLE

*MAXIMUM ALLOWABLE SPACING AND DEAD LOAD (WEIGHT OF
CLADDING) IS BASED ON THE TOTAL LOAD (DEAD + LIVE) ACTING ON THE
ASSEMBLY, BRACKETS AND CONNECTIONS.

9 TYPICAL OUTSIDE CORNER

SCALE: 3" = 1'-0"

[BACK TO TABLE OF CONTENTS](#)

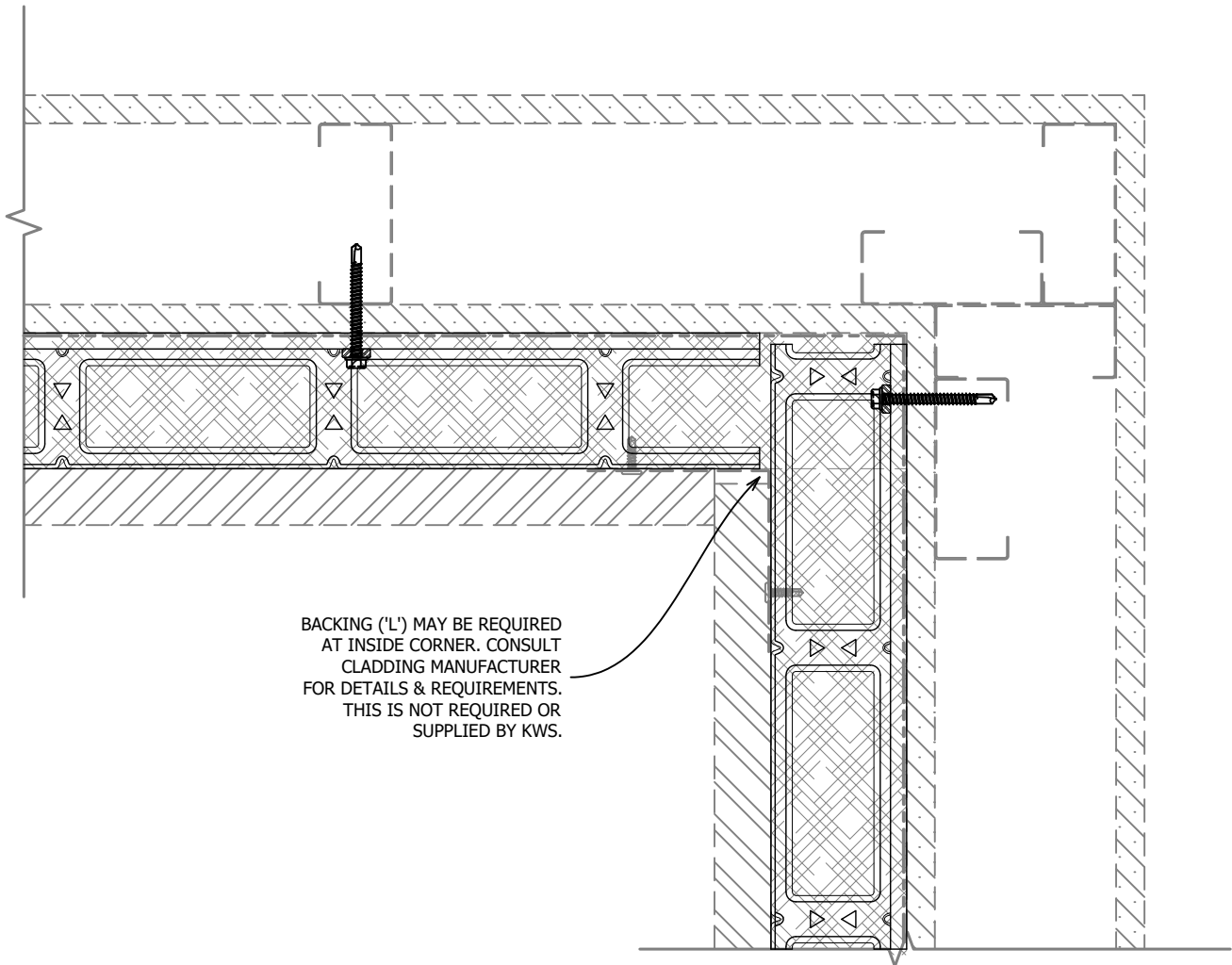
07/15/2020

THESE GUIDE DETAILS ARE PROVIDED FOR INFORMATION ONLY
AND OUTLINE GENERAL/TYPICAL REQUIREMENTS FOR THE
ATTACHMENT SYSTEM. PROJECT SPECIFIC ENGINEERING IS
AVAILABLE TO ADDRESS STRUCTURAL ATTACHMENT (i.e.
FASTENING PATTERN, ETC.). CONTACT KWS FOR FURTHER
DETAILS. **ALL IMPLIED WARRANTIES INCLUDING
MERCHANTABILITY & FITNESS FOR A PARTICULAR
PURPOSE ARE EXPRESSLY EXCLUDED.**

www.knightwallsystems.com
© Knight Wall Systems Deer Park, WA - 1.855.KWS.WALL
PATENT US 8,429,866 B2, OTHERS PENDING - Drawn by: BN



KNIGHT ThermaZee™
(HORIZONTAL ORIENTATION)
RAINSCREEN ATTACHMENT



BACKING ("L") MAY BE REQUIRED
AT INSIDE CORNER. CONSULT
CLADDING MANUFACTURER
FOR DETAILS & REQUIREMENTS.
THIS IS NOT REQUIRED OR
SUPPLIED BY KWS.

*16 GAUGE RAILS, FACTORY BLACK COATED RAILS & STAINLESS STEEL
(304) AVAILABLE

*MAXIMUM ALLOWABLE SPACING AND DEAD LOAD (WEIGHT OF
CLADDING) IS BASED ON THE TOTAL LOAD (DEAD + LIVE) ACTING ON THE
ASSEMBLY, BRACKETS AND CONNECTIONS.

10 TYPICAL INSIDE CORNER

SCALE: 3" = 1'-0"

[BACK TO TABLE OF CONTENTS](#)

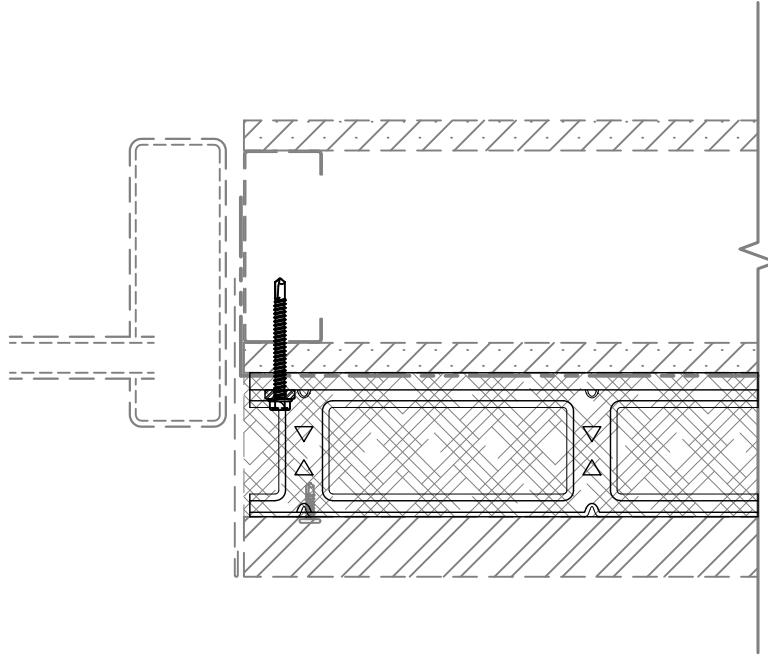
07/15/2020

THESE GUIDE DETAILS ARE PROVIDED FOR INFORMATION ONLY
AND OUTLINE GENERAL/TYPICAL REQUIREMENTS FOR THE
ATTACHMENT SYSTEM. PROJECT SPECIFIC ENGINEERING IS
AVAILABLE TO ADDRESS STRUCTURAL ATTACHMENT (i.e.
FASTENING PATTERN, ETC.). CONTACT KWS FOR FURTHER
DETAILS. **ALL IMPLIED WARRANTIES INCLUDING
MERCHANTABILITY & FITNESS FOR A PARTICULAR
PURPOSE ARE EXPRESSLY EXCLUDED.**

www.knightwallsystems.com
© Knight Wall Systems Deer Park, WA - 1.855.KWS.WALL
PATENT US 8,429,866 B2, OTHERS PENDING - Drawn by: BN



KNIGHT ThermaZee™
(HORIZONTAL ORIENTATION)
RAINSCREEN ATTACHMENT



* FLASHING DETAILS VARY BASED ON WINDOW TYPE,
POSITION (INSET VS FLUSH) AND CLADDING TYPE.
FLASHING IS NOT BY KWS.

*16 GAUGE RAILS, FACTORY BLACK COATED RAILS & STAINLESS STEEL
(304) AVAILABLE

*MAXIMUM ALLOWABLE SPACING AND DEAD LOAD (WEIGHT OF
CLADDING) IS BASED ON THE TOTAL LOAD (DEAD + LIVE) ACTING ON THE
ASSEMBLY, BRACKETS AND CONNECTIONS.

11 TYPICAL JAMB CONDITION

SCALE: 3" = 1'-0"

[BACK TO TABLE OF CONTENTS](#)

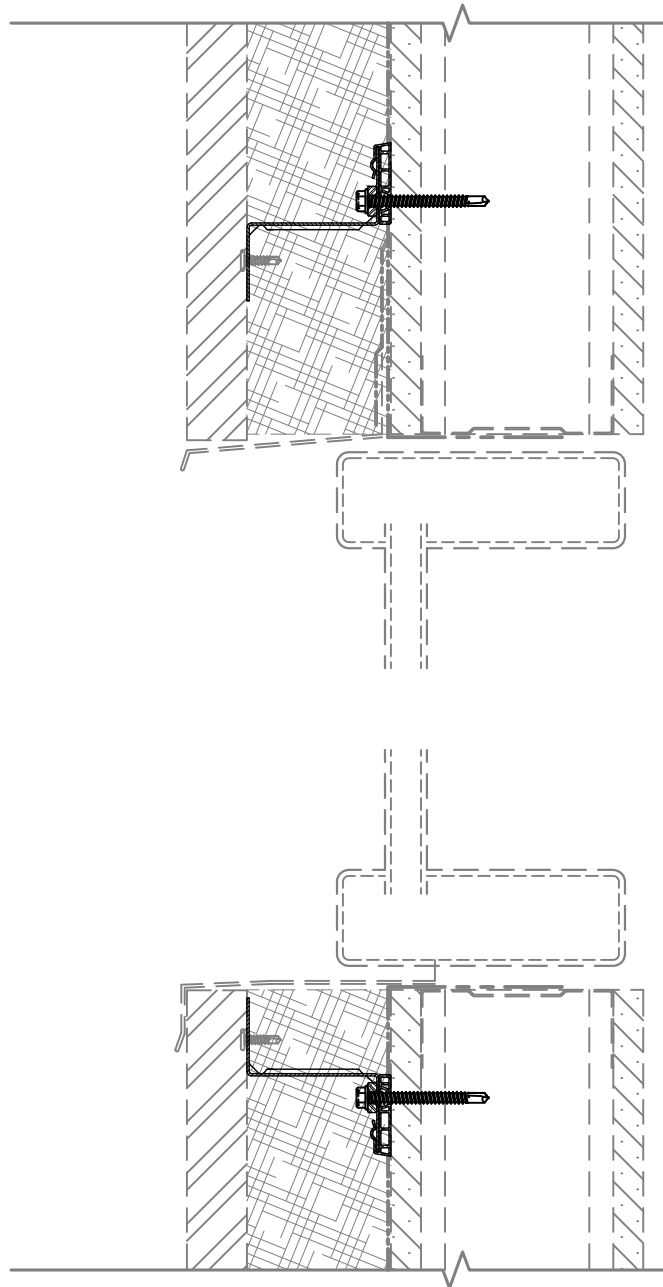
07/15/2020

THESE GUIDE DETAILS ARE PROVIDED FOR INFORMATION ONLY
AND OUTLINE GENERAL/TYPICAL REQUIREMENTS FOR THE
ATTACHMENT SYSTEM. PROJECT SPECIFIC ENGINEERING IS
AVAILABLE TO ADDRESS STRUCTURAL ATTACHMENT (i.e.
FASTENING PATTERN, ETC.). CONTACT KWS FOR FURTHER
DETAILS. **ALL IMPLIED WARRANTIES INCLUDING
MERCHANTABILITY & FITNESS FOR A PARTICULAR
PURPOSE ARE EXPRESSLY EXCLUDED.**

www.knightwallsystems.com
© Knight Wall Systems Deer Park, WA - 1.855.KWS.WALL
PATENT US 8,429,866 B2, OTHERS PENDING - Drawn by: BN



KNIGHT ThermaZee™
(HORIZONTAL ORIENTATION)
RAINSCREEN ATTACHMENT



* FLASHING DETAILS VARY BASED ON WINDOW TYPE,
POSITION (INSET VS FLUSH) AND CLADDING TYPE.
FLASHING IS NOT BY KWS.

*16 GAUGE RAILS, FACTORY BLACK COATED RAILS & STAINLESS STEEL
(304) AVAILABLE

*MAXIMUM ALLOWABLE SPACING AND DEAD LOAD (WEIGHT OF
CLADDING) IS BASED ON THE TOTAL LOAD (DEAD + LIVE) ACTING ON THE
ASSEMBLY, BRACKETS AND CONNECTIONS.

12 TYPICAL HEAD & SILL CONDITION

SCALE: 3" = 1'-0"

[BACK TO TABLE OF CONTENTS](#)

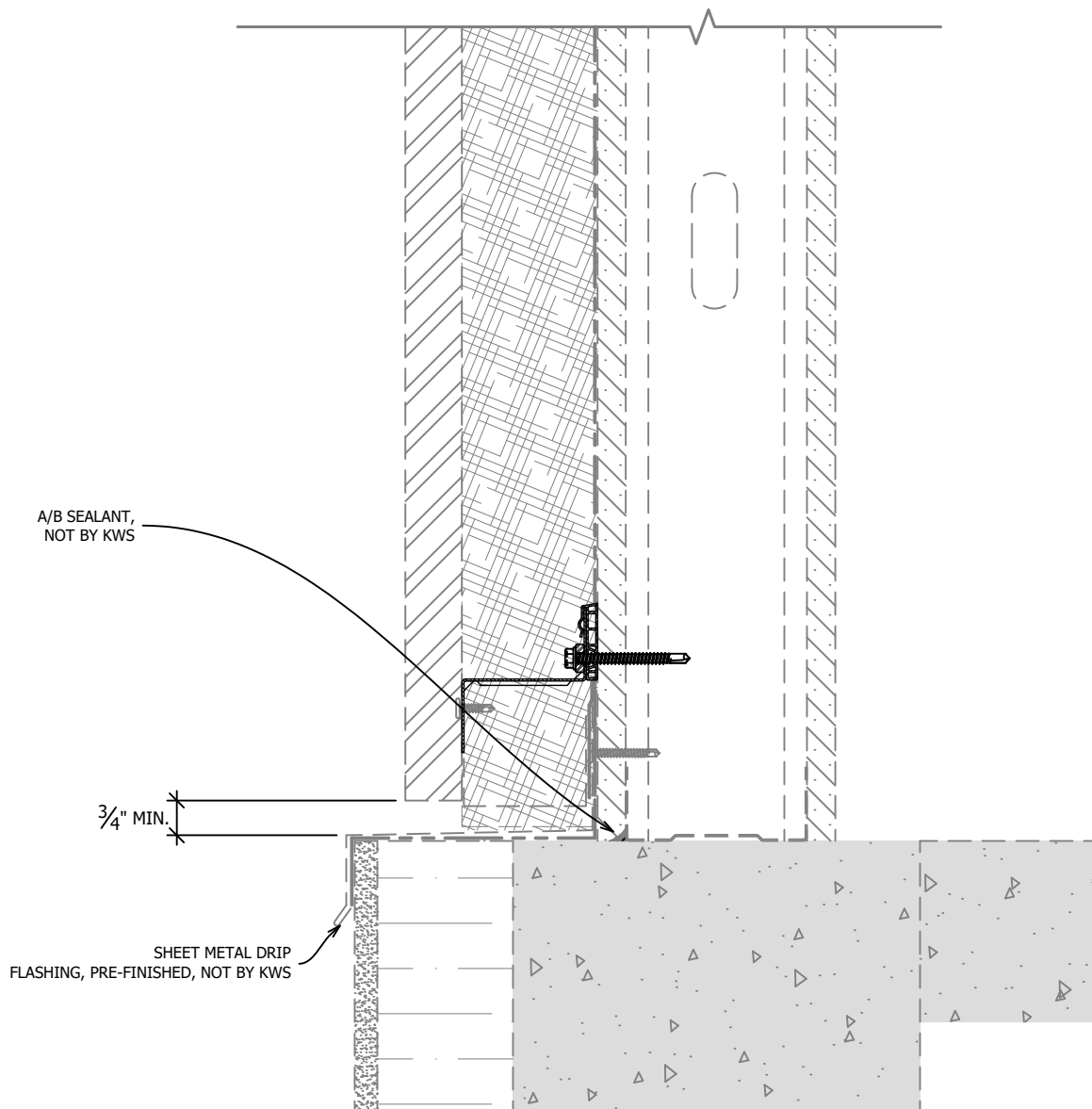
07/15/2020

THESE GUIDE DETAILS ARE PROVIDED FOR INFORMATION ONLY
AND OUTLINE GENERAL/TYPICAL REQUIREMENTS FOR THE
ATTACHMENT SYSTEM. PROJECT SPECIFIC ENGINEERING IS
AVAILABLE TO ADDRESS STRUCTURAL ATTACHMENT (i.e.
FASTENING PATTERN, ETC.). CONTACT KWS FOR FURTHER
DETAILS. **ALL IMPLIED WARRANTIES INCLUDING
MERCHANTABILITY & FITNESS FOR A PARTICULAR
PURPOSE ARE EXPRESSLY EXCLUDED.**

www.knightwallsystems.com
© Knight Wall Systems Deer Park, WA - 1.855.KWS.WALL
PATENT US 8,429,866 B2, OTHERS PENDING - Drawn by: BN



KNIGHT ThermaZee™
(HORIZONTAL ORIENTATION)
RAINSOEN ATTACHMENT



* CLEAR & UNRESTRICTED VENTILATION & DRAINAGE
REQUIRED AT BASE OF WALL

*16 GAUGE RAILS, FACTORY BLACK COATED RAILS & STAINLESS STEEL
(304) AVAILABLE

*MAXIMUM ALLOWABLE SPACING AND DEAD LOAD (WEIGHT OF
CLADDING) IS BASED ON THE TOTAL LOAD (DEAD + LIVE) ACTING ON THE
ASSEMBLY, BRACKETS AND CONNECTIONS.

13 TYPICAL BASE OF WALL CONDITION

SCALE: 3" = 1'-0"

[BACK TO TABLE OF CONTENTS](#)

07/15/2020

THESE GUIDE DETAILS ARE PROVIDED FOR INFORMATION ONLY
AND OUTLINE GENERAL/TYPICAL REQUIREMENTS FOR THE
ATTACHMENT SYSTEM. PROJECT SPECIFIC ENGINEERING IS
AVAILABLE TO ADDRESS STRUCTURAL ATTACHMENT (i.e.
FASTENING PATTERN, ETC.). CONTACT KWS FOR FURTHER
DETAILS. **ALL IMPLIED WARRANTIES INCLUDING
MERCHANTABILITY & FITNESS FOR A PARTICULAR
PURPOSE ARE EXPRESSLY EXCLUDED.**

www.knightwallsystems.com
© Knight Wall Systems Deer Park, WA - 1.855.KWS.WALL
PATENT US 8,429,866 B2, OTHERS PENDING - Drawn by: BN

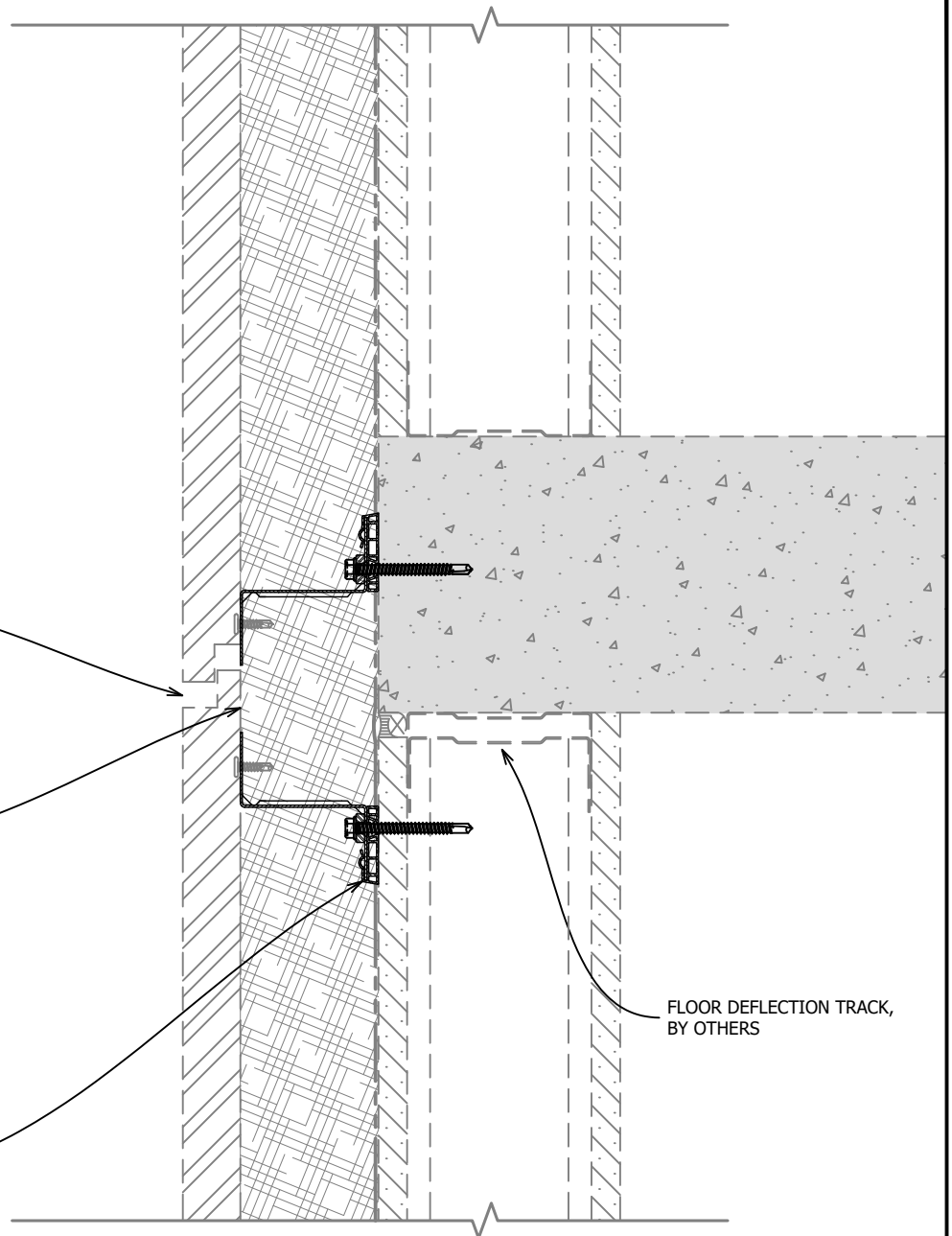


**KNIGHT ThermaZee™
(HORIZONTAL ORIENTATION)
RAINSCREEN ATTACHMENT**

A BREAK/MOVEMENT JOINT IN CLADDING MUST COINCIDE WITH BREAK IN ATTACHMENT SYSTEM AND FLOOR DEFLECTION JOINTS TO PREVENT DAMAGE AND STRESS ON WALL SYSTEM, CONSULT CLADDING MANUFACTURER FOR DETAILS, NOT BY KWS

GAP BETWEEN RAILS TYPICALLY EQUALS 1.5x THE EXPECTED FLOOR MOVEMENT, MINIMUM OF $\frac{3}{8}$ " AND MAXIMUM OF 1"

ThermaZee MUST NOT INFRINGE ON STEEL STUD FLOOR DEFLECTION TRACK MOVEMENT



*16 GAUGE RAILS, FACTORY BLACK COATED RAILS & STAINLESS STEEL (304) AVAILABLE

*MAXIMUM ALLOWABLE SPACING AND DEAD LOAD (WEIGHT OF CLADDING) IS BASED ON THE TOTAL LOAD (DEAD + LIVE) ACTING ON THE ASSEMBLY, BRACKETS AND CONNECTIONS.

14

TYPICAL FLOOR DEFLECTION JOINT

SCALE: 3" = 1'-0"

[BACK TO TABLE OF CONTENTS](#)

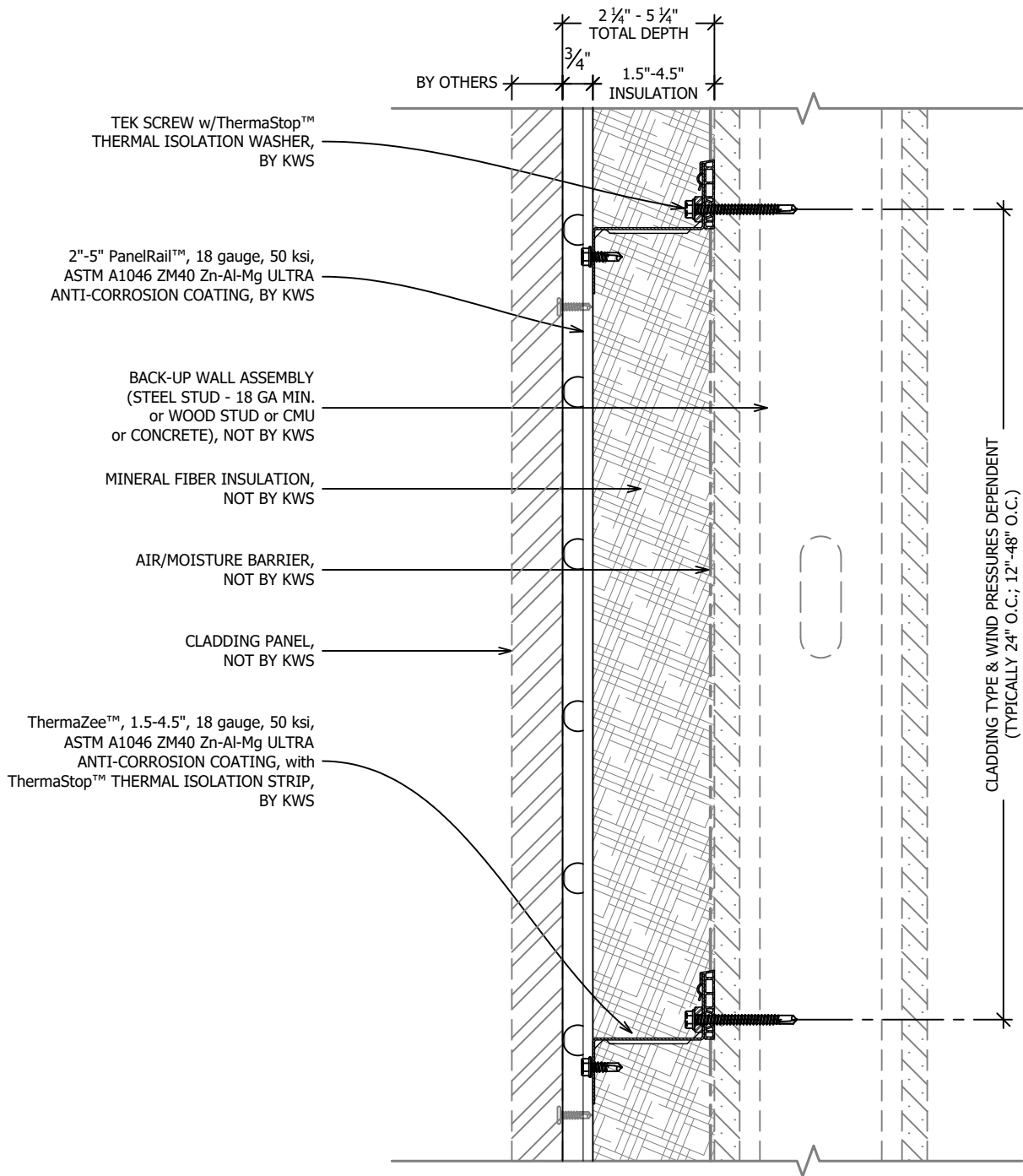
07/15/2020

THESE GUIDE DETAILS ARE PROVIDED FOR INFORMATION ONLY AND OUTLINE GENERAL/TYPICAL REQUIREMENTS FOR THE ATTACHMENT SYSTEM. PROJECT SPECIFIC ENGINEERING IS AVAILABLE TO ADDRESS STRUCTURAL ATTACHMENT (i.e. FASTENING PATTERN, ETC.). CONTACT KWS FOR FURTHER DETAILS. **ALL IMPLIED WARRANTIES INCLUDING MERCHANTABILITY & FITNESS FOR A PARTICULAR PURPOSE ARE EXPRESSLY EXCLUDED.**

www.knightwallsystems.com
© Knight Wall Systems Deer Park, WA - 1.855.KWS.WALL
PATENT US 8,429,866 B2, OTHERS PENDING - Drawn by: BN



KNIGHT ThermaZee™
(HORIZONTAL ORIENTATION)
RAINSCREEN ATTACHMENT



SYSTEM MAY BE INSTALLED OVER STEEL STUDS,
WOOD STUDS, CMU OR CONCRETE SUBSTRATES
(WITH USE OF APPROPRIATE WALL ANCHORS).

*16 GAUGE RAILS, FACTORY BLACK COATED RAILS & STAINLESS STEEL
(304) AVAILABLE

*MAXIMUM ALLOWABLE SPACING AND DEAD LOAD (WEIGHT OF
CLADDING) IS BASED ON THE TOTAL LOAD (DEAD + LIVE) ACTING ON THE
ASSEMBLY, BRACKETS AND CONNECTIONS.

15 TYP SECTION VIEW - ThermaZee + PanelRail

SCALE: 3" = 1'-0"

[BACK TO TABLE OF CONTENTS](#)

07/15/2020

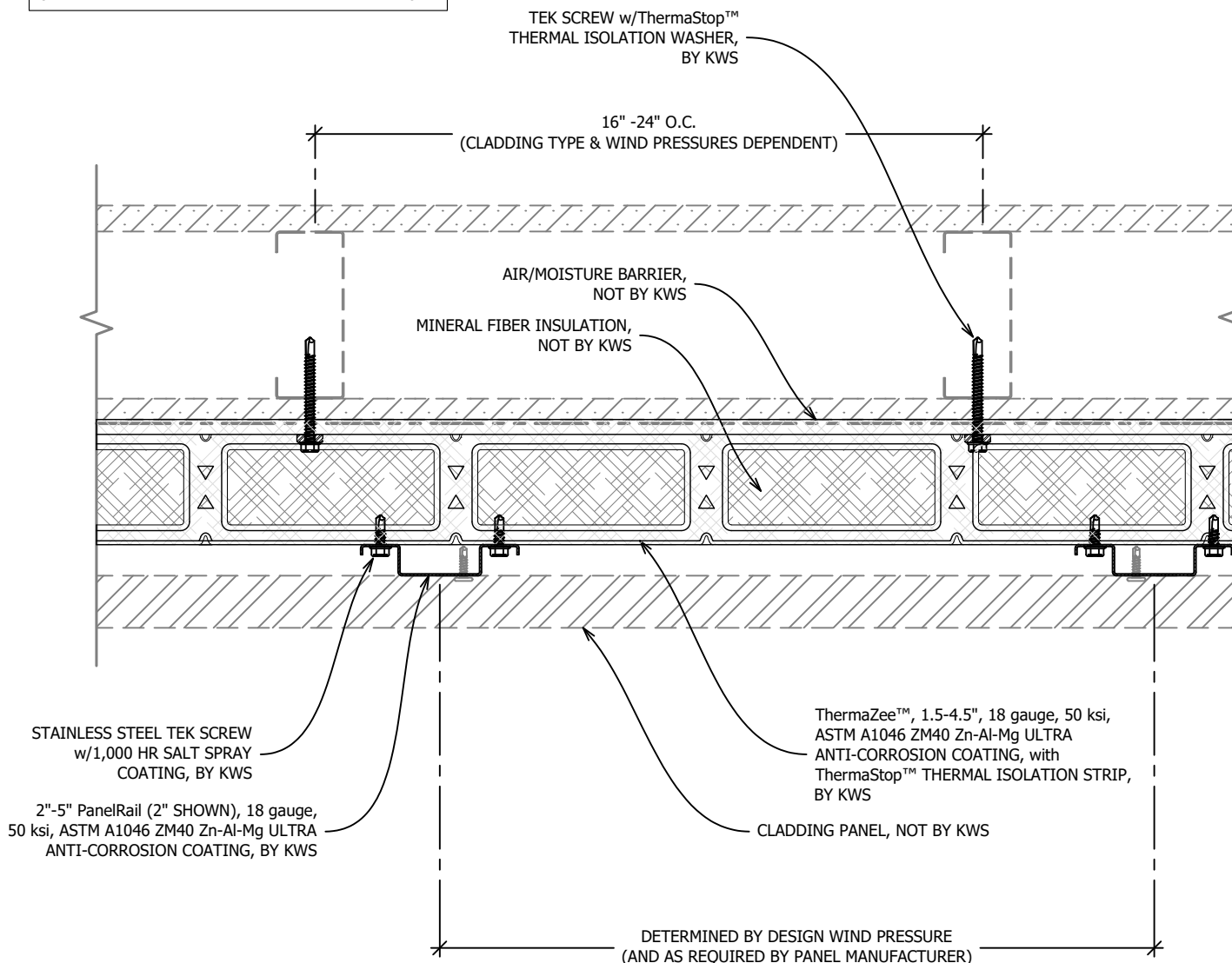
THESE GUIDE DETAILS ARE PROVIDED FOR INFORMATION ONLY
AND OUTLINE GENERAL/TYPICAL REQUIREMENTS FOR THE
ATTACHMENT SYSTEM. PROJECT SPECIFIC ENGINEERING IS
AVAILABLE TO ADDRESS STRUCTURAL ATTACHMENT (i.e.
FASTENING PATTERN, ETC.). CONTACT KWS FOR FURTHER
DETAILS. **ALL IMPLIED WARRANTIES INCLUDING
MERCHANTABILITY & FITNESS FOR A PARTICULAR
PURPOSE ARE EXPRESSLY EXCLUDED.**

www.knightwallsystems.com
© Knight Wall Systems Deer Park, WA - 1.855.KWS.WALL
PATENT US 8,429,866 B2, OTHERS PENDING - Drawn by: BN



KNIGHT ThermaZee™
(HORIZONTAL ORIENTATION)
RAINSCREEN ATTACHMENT

SYSTEM MAY BE INSTALLED OVER STEEL STUDS,
WOOD STUDS, CMU OR CONCRETE SUBSTRATES
(WITH USE OF APPROPRIATE WALL ANCHORS).



*16 GAUGE RAILS, FACTORY BLACK COATED RAILS & STAINLESS STEEL
(304) AVAILABLE

*MAXIMUM ALLOWABLE SPACING AND DEAD LOAD (WEIGHT OF
CLADDING) IS BASED ON THE TOTAL LOAD (DEAD + LIVE) ACTING ON THE
ASSEMBLY, BRACKETS AND CONNECTIONS.

16 TYP PLAN VIEW - ThermaZee + PanelRail

SCALE: 3" = 1'-0"

[BACK TO TABLE OF CONTENTS](#)

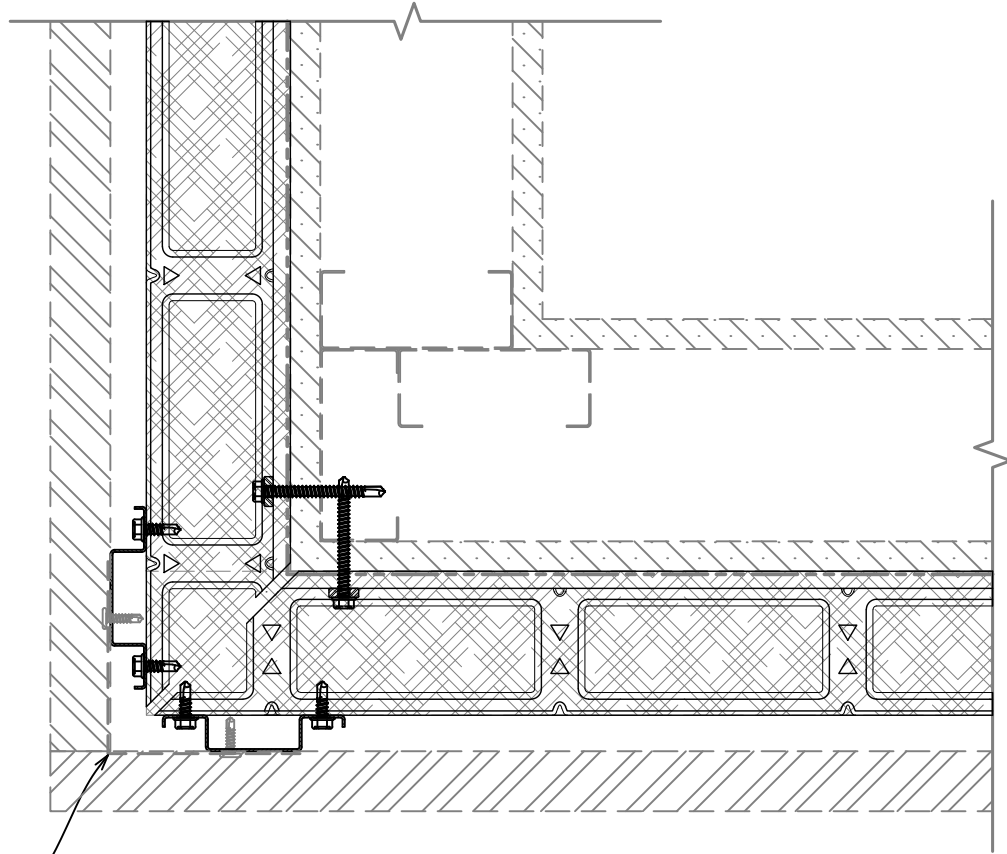
07/15/2020

THESE GUIDE DETAILS ARE PROVIDED FOR INFORMATION ONLY
AND OUTLINE GENERAL/TYPICAL REQUIREMENTS FOR THE
ATTACHMENT SYSTEM. PROJECT SPECIFIC ENGINEERING IS
AVAILABLE TO ADDRESS STRUCTURAL ATTACHMENT (i.e.
FASTENING PATTERN, ETC.). CONTACT KWS FOR FURTHER
DETAILS. **ALL IMPLIED WARRANTIES INCLUDING
MERCHANTABILITY & FITNESS FOR A PARTICULAR
PURPOSE ARE EXPRESSLY EXCLUDED.**

www.knightwallsystems.com
© Knight Wall Systems Deer Park, WA - 1.855.KWS.WALL
PATENT US 8,429,866 B2, OTHERS PENDING - Drawn by: BN



**KNIGHT ThermaZee™
(HORIZONTAL ORIENTATION)
RAINSCREEN ATTACHMENT**



BACKING ('L') MAY BE REQUIRED
AT OUTSIDE CORNER. CONSULT
CLADDING MANUFACTURER FOR
DETAILS & REQUIREMENTS.
THIS IS NOT REQUIRED OR
SUPPLIED BY KWS.

*16 GAUGE RAILS, FACTORY BLACK COATED RAILS & STAINLESS STEEL
(304) AVAILABLE

*MAXIMUM ALLOWABLE SPACING AND DEAD LOAD (WEIGHT OF
CLADDING) IS BASED ON THE TOTAL LOAD (DEAD + LIVE) ACTING ON THE
ASSEMBLY, BRACKETS AND CONNECTIONS.

17 TYPICAL OUTSIDE CORNER

SCALE: 3" = 1'-0"

[BACK TO TABLE OF CONTENTS](#)

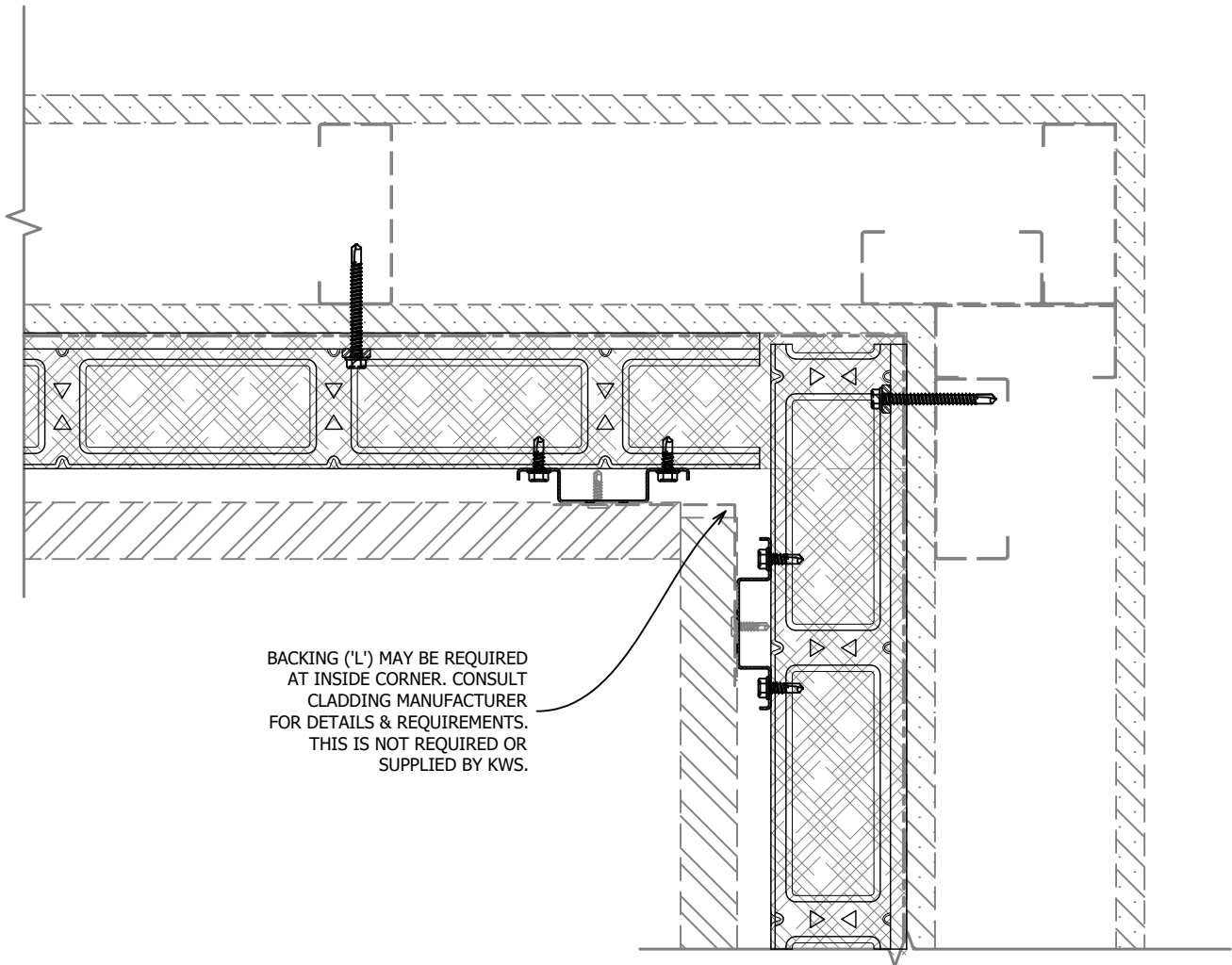
07/15/2020

THESE GUIDE DETAILS ARE PROVIDED FOR INFORMATION ONLY
AND OUTLINE GENERAL/TYPICAL REQUIREMENTS FOR THE
ATTACHMENT SYSTEM. PROJECT SPECIFIC ENGINEERING IS
AVAILABLE TO ADDRESS STRUCTURAL ATTACHMENT (i.e.
FASTENING PATTERN, ETC.). CONTACT KWS FOR FURTHER
DETAILS. **ALL IMPLIED WARRANTIES INCLUDING
MERCHANTABILITY & FITNESS FOR A PARTICULAR
PURPOSE ARE EXPRESSLY EXCLUDED.**

www.knightwallsystems.com
© Knight Wall Systems Deer Park, WA - 1.855.KWS.WALL
PATENT US 8,429,866 B2, OTHERS PENDING - Drawn by: BN



KNIGHT ThermaZee™
(HORIZONTAL ORIENTATION)
RAINSCREEN ATTACHMENT



BACKING ("L") MAY BE REQUIRED
AT INSIDE CORNER. CONSULT
CLADDING MANUFACTURER
FOR DETAILS & REQUIREMENTS.
THIS IS NOT REQUIRED OR
SUPPLIED BY KWS.

*16 GAUGE RAILS, FACTORY BLACK COATED RAILS & STAINLESS STEEL
(304) AVAILABLE

*MAXIMUM ALLOWABLE SPACING AND DEAD LOAD (WEIGHT OF
CLADDING) IS BASED ON THE TOTAL LOAD (DEAD + LIVE) ACTING ON THE
ASSEMBLY, BRACKETS AND CONNECTIONS.

18 TYPICAL INSIDE CORNER

SCALE: 3" = 1'-0"

[BACK TO TABLE OF CONTENTS](#)

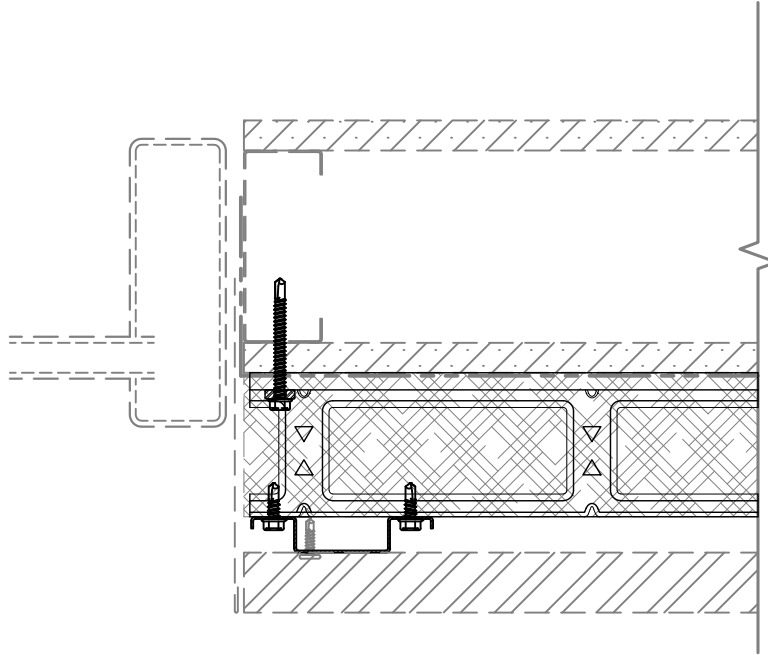
07/15/2020

THESE GUIDE DETAILS ARE PROVIDED FOR INFORMATION ONLY
AND OUTLINE GENERAL/TYPICAL REQUIREMENTS FOR THE
ATTACHMENT SYSTEM. PROJECT SPECIFIC ENGINEERING IS
AVAILABLE TO ADDRESS STRUCTURAL ATTACHMENT (i.e.
FASTENING PATTERN, ETC.). CONTACT KWS FOR FURTHER
DETAILS. **ALL IMPLIED WARRANTIES INCLUDING
MERCHANTABILITY & FITNESS FOR A PARTICULAR
PURPOSE ARE EXPRESSLY EXCLUDED.**

www.knightwallsystems.com
© Knight Wall Systems Deer Park, WA - 1.855.KWS.WALL
PATENT US 8,429,866 B2, OTHERS PENDING - Drawn by: BN



KNIGHT ThermaZee™
(HORIZONTAL ORIENTATION)
RAINSCREEN ATTACHMENT



* FLASHING DETAILS VARY BASED ON WINDOW TYPE,
POSITION (INSET VS FLUSH) AND CLADDING TYPE.
FLASHING IS NOT BY KWS.

*16 GAUGE RAILS, FACTORY BLACK COATED RAILS & STAINLESS STEEL
(304) AVAILABLE

*MAXIMUM ALLOWABLE SPACING AND DEAD LOAD (WEIGHT OF
CLADDING) IS BASED ON THE TOTAL LOAD (DEAD + LIVE) ACTING ON THE
ASSEMBLY, BRACKETS AND CONNECTIONS.

19 TYPICAL JAMB CONDITION

SCALE: 3" = 1'-0"

[BACK TO TABLE OF CONTENTS](#)

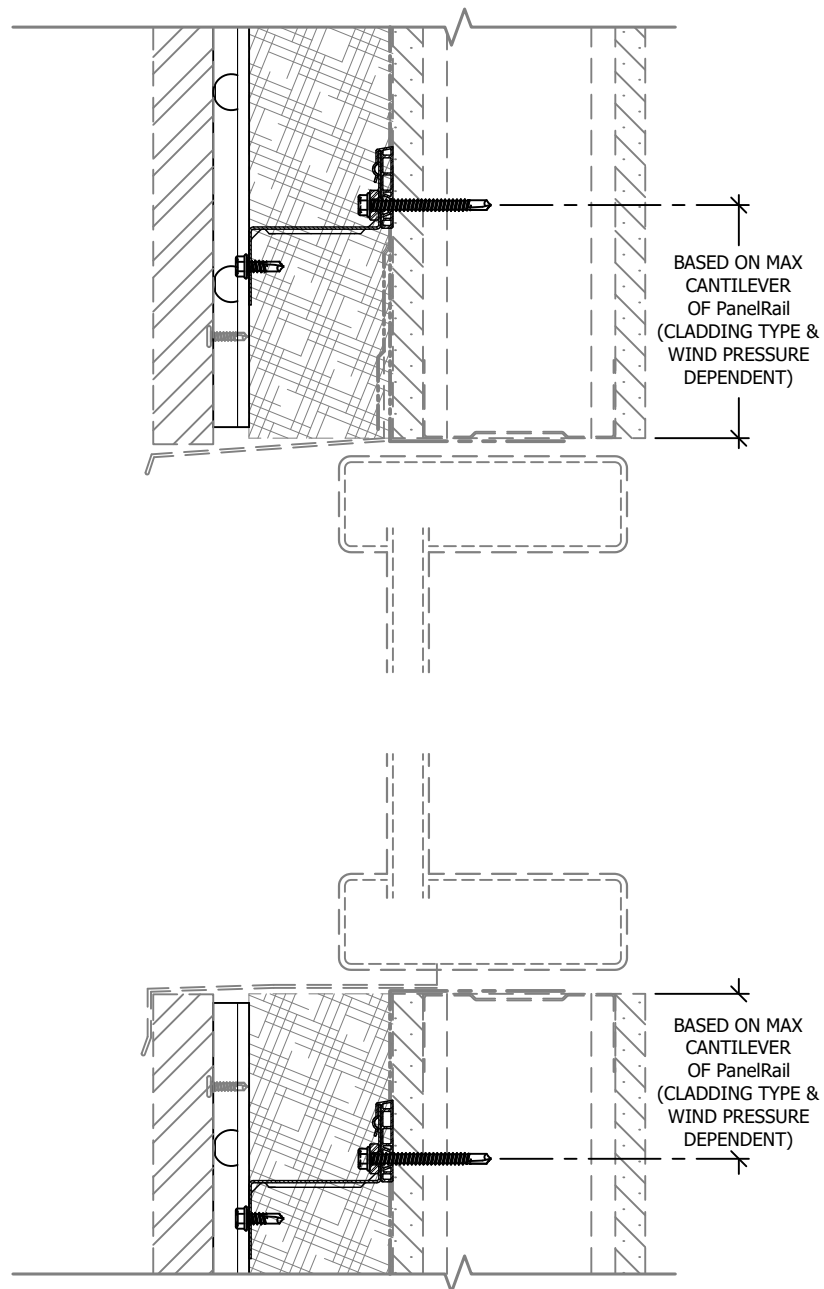
07/15/2020

THESE GUIDE DETAILS ARE PROVIDED FOR INFORMATION ONLY
AND OUTLINE GENERAL/TYPICAL REQUIREMENTS FOR THE
ATTACHMENT SYSTEM. PROJECT SPECIFIC ENGINEERING IS
AVAILABLE TO ADDRESS STRUCTURAL ATTACHMENT (i.e.
FASTENING PATTERN, ETC.). CONTACT KWS FOR FURTHER
DETAILS. **ALL IMPLIED WARRANTIES INCLUDING
MERCHANTABILITY & FITNESS FOR A PARTICULAR
PURPOSE ARE EXPRESSLY EXCLUDED.**

www.knightwallsystems.com
© Knight Wall Systems Deer Park, WA - 1.855.KWS.WALL
PATENT US 8,429,866 B2, OTHERS PENDING - Drawn by: BN



KNIGHT ThermaZee™
(HORIZONTAL ORIENTATION)
RAINSOEN ATTACHMENT



* FLASHING DETAILS VARY BASED ON WINDOW TYPE, POSITION (INSET VS FLUSH) AND CLADDING TYPE. FLASHING IS NOT BY KWS.

*16 GAUGE RAILS, FACTORY BLACK COATED RAILS & STAINLESS STEEL (304) AVAILABLE

*MAXIMUM ALLOWABLE SPACING AND DEAD LOAD (WEIGHT OF CLADDING) IS BASED ON THE TOTAL LOAD (DEAD + LIVE) ACTING ON THE ASSEMBLY, BRACKETS AND CONNECTIONS.

20 TYPICAL HEAD & SILL CONDITION

SCALE: 3" = 1'-0"

[BACK TO TABLE OF CONTENTS](#)

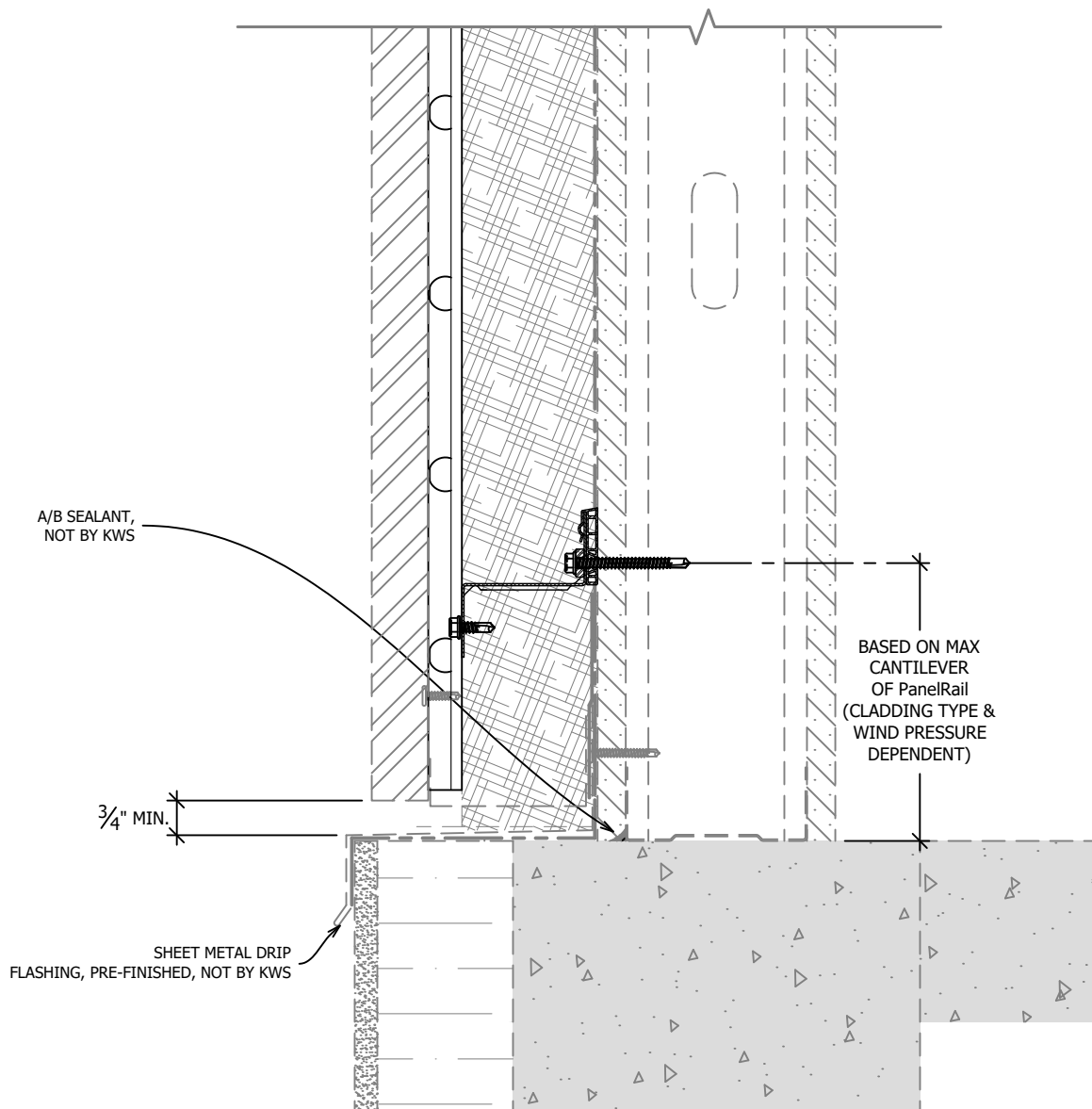
07/15/2020

THESE GUIDE DETAILS ARE PROVIDED FOR INFORMATION ONLY AND OUTLINE GENERAL/TYPICAL REQUIREMENTS FOR THE ATTACHMENT SYSTEM. PROJECT SPECIFIC ENGINEERING IS AVAILABLE TO ADDRESS STRUCTURAL ATTACHMENT (i.e. FASTENING PATTERN, ETC.). CONTACT KWS FOR FURTHER DETAILS. **ALL IMPLIED WARRANTIES INCLUDING MERCHANTABILITY & FITNESS FOR A PARTICULAR PURPOSE ARE EXPRESSLY EXCLUDED.**

www.knightwallsystems.com
© Knight Wall Systems Deer Park, WA - 1.855.KWS.WALL
PATENT US 8,429,866 B2, OTHERS PENDING - Drawn by: BN



KNIGHT ThermaZee™
(HORIZONTAL ORIENTATION)
RAINSWEEPER ATTACHMENT



* CLEAR & UNRESTRICTED VENTILATION & DRAINAGE
REQUIRED AT BASE OF WALL

*16 GAUGE RAILS, FACTORY BLACK COATED RAILS & STAINLESS STEEL
(304) AVAILABLE

*MAXIMUM ALLOWABLE SPACING AND DEAD LOAD (WEIGHT OF
CLADDING) IS BASED ON THE TOTAL LOAD (DEAD + LIVE) ACTING ON THE
ASSEMBLY, BRACKETS AND CONNECTIONS.

21 TYPICAL BASE OF WALL CONDITION

SCALE: 3" = 1'-0"

[BACK TO TABLE OF CONTENTS](#)

07/15/2020

THESE GUIDE DETAILS ARE PROVIDED FOR INFORMATION ONLY
AND OUTLINE GENERAL/TYPICAL REQUIREMENTS FOR THE
ATTACHMENT SYSTEM. PROJECT SPECIFIC ENGINEERING IS
AVAILABLE TO ADDRESS STRUCTURAL ATTACHMENT (i.e.
FASTENING PATTERN, ETC.). CONTACT KWS FOR FURTHER
DETAILS. **ALL IMPLIED WARRANTIES INCLUDING
MERCHANTABILITY & FITNESS FOR A PARTICULAR
PURPOSE ARE EXPRESSLY EXCLUDED.**

www.knightwallsystems.com
© Knight Wall Systems Deer Park, WA - 1.855.KWS.WALL
PATENT US 8,429,866 B2, OTHERS PENDING - Drawn by: BN



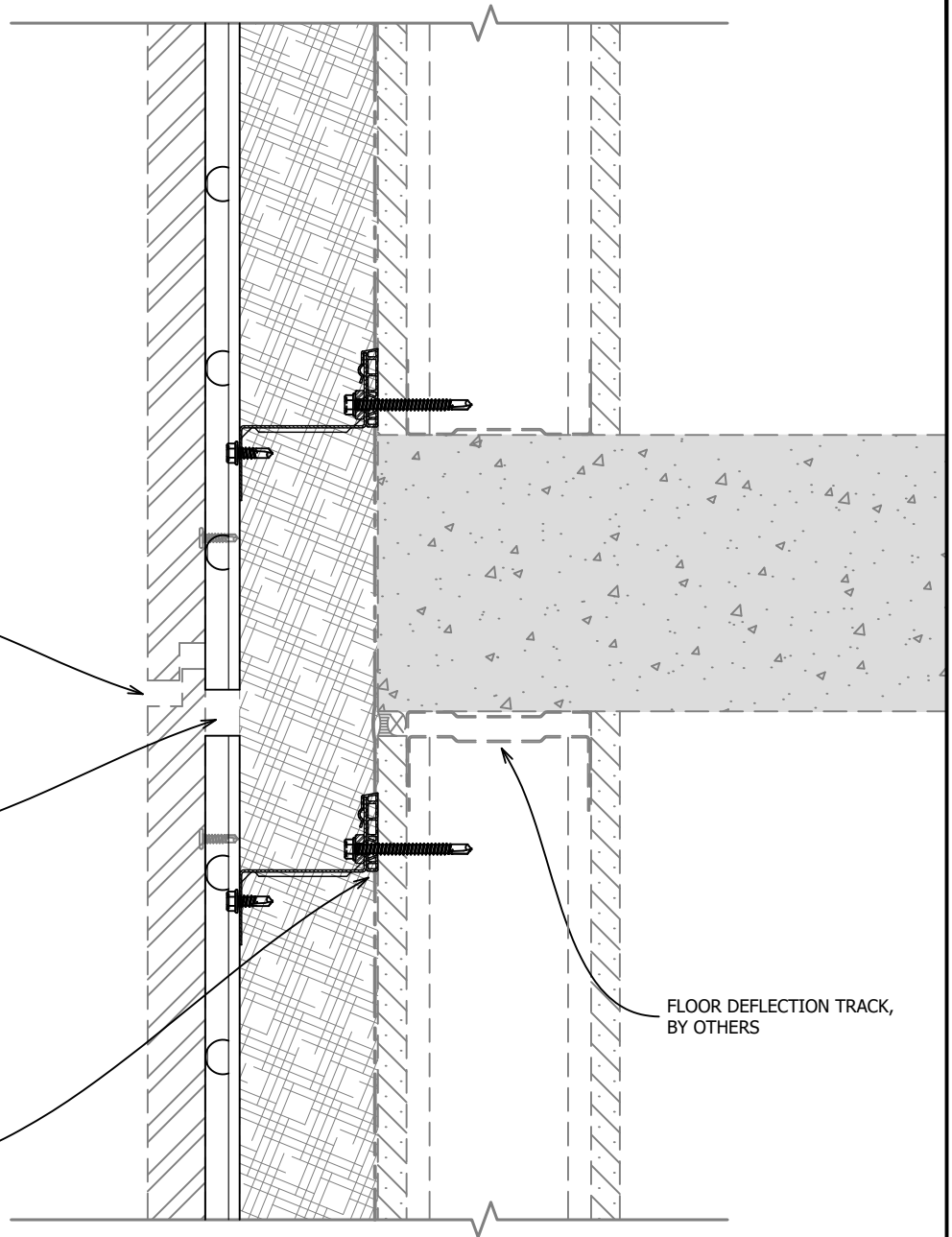
**KNIGHT ThermaZee™
(HORIZONTAL ORIENTATION)
RAINSCREEN ATTACHMENT**

NOTE:
MAXIMUM PanelRail CANTILEVER
BEYOND A ThermoZee VARIES
PER PROJECT. TYPICALLY IT
WILL RANGE FROM 6"-14".

A BREAK/MOVEMENT JOINT IN
CLADDING MUST COINCIDE WITH
BREAK IN ATTACHMENT SYSTEM
AND FLOOR DEFLECTION JOINTS
TO PREVENT DAMAGE AND STRESS
ON WALL SYSTEM, CONSULT CLADDING
MANUFACTURER FOR DETAILS,
NOT BY KWS

GAP BETWEEN RAILS TYPICALLY
EQUALS 1.5x THE EXPECTED
FLOOR MOVEMENT, MINIMUM
OF $\frac{3}{8}$ " AND MAXIMUM OF 1"

ThermoZee MUST NOT INFRINGE ON
STEEL STUD FLOOR DEFLECTION
TRACK MOVEMENT



*16 GAUGE RAILS, FACTORY BLACK COATED RAILS & STAINLESS STEEL
(304) AVAILABLE

*MAXIMUM ALLOWABLE SPACING AND DEAD LOAD (WEIGHT OF
CLADDING) IS BASED ON THE TOTAL LOAD (DEAD + LIVE) ACTING ON THE
ASSEMBLY, BRACKETS AND CONNECTIONS.

22

TYPICAL FLOOR DEFLECTION JOINT

SCALE: 3" = 1'-0"

[BACK TO TABLE OF CONTENTS](#)

07/15/2020

THESE GUIDE DETAILS ARE PROVIDED FOR INFORMATION ONLY
AND OUTLINE GENERAL/TYPICAL REQUIREMENTS FOR THE
ATTACHMENT SYSTEM. PROJECT SPECIFIC ENGINEERING IS
AVAILABLE TO ADDRESS STRUCTURAL ATTACHMENT (i.e.
FASTENING PATTERN, ETC.). CONTACT KWS FOR FURTHER
DETAILS. **ALL IMPLIED WARRANTIES INCLUDING
MERCHANTABILITY & FITNESS FOR A PARTICULAR
PURPOSE ARE EXPRESSLY EXCLUDED.**

www.knightwallsystems.com
© Knight Wall Systems Deer Park, WA - 1.855.KWS.WALL
PATENT US 8,429,866 B2, OTHERS PENDING - Drawn by: BN



KNIGHT ThermoZee™
(HORIZONTAL ORIENTATION)
RAINSOEN ATTACHMENT