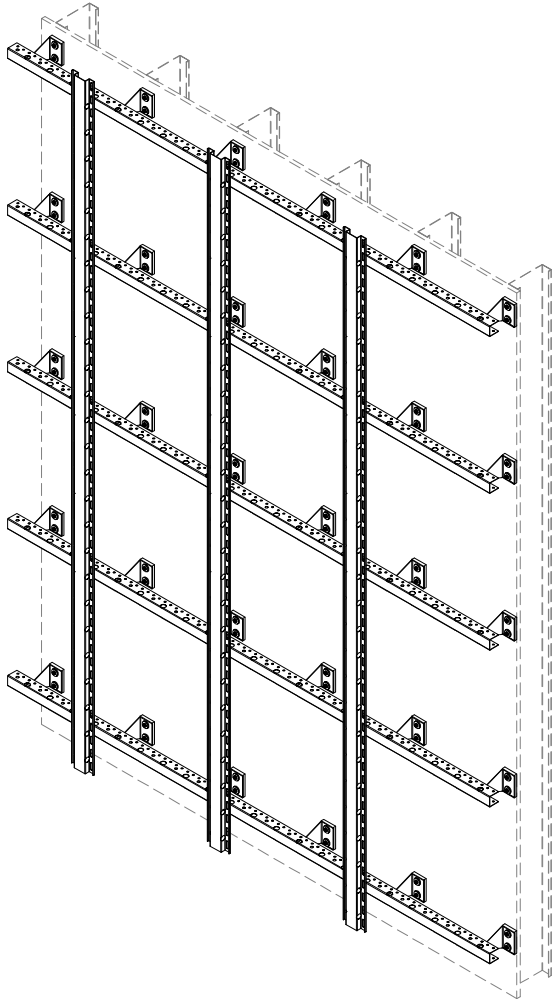


# KNIGHT WALL SYSTEMS GUIDE DETAILS:

## MFI® System - D-Series (HORIZONTAL)

### RAINSCREEN ATTACHMENT for CLADDING PANELS



#### HORIZONTAL ORIENTED SYSTEM WITH OPTIONAL

#### VERTICAL PanelRails™

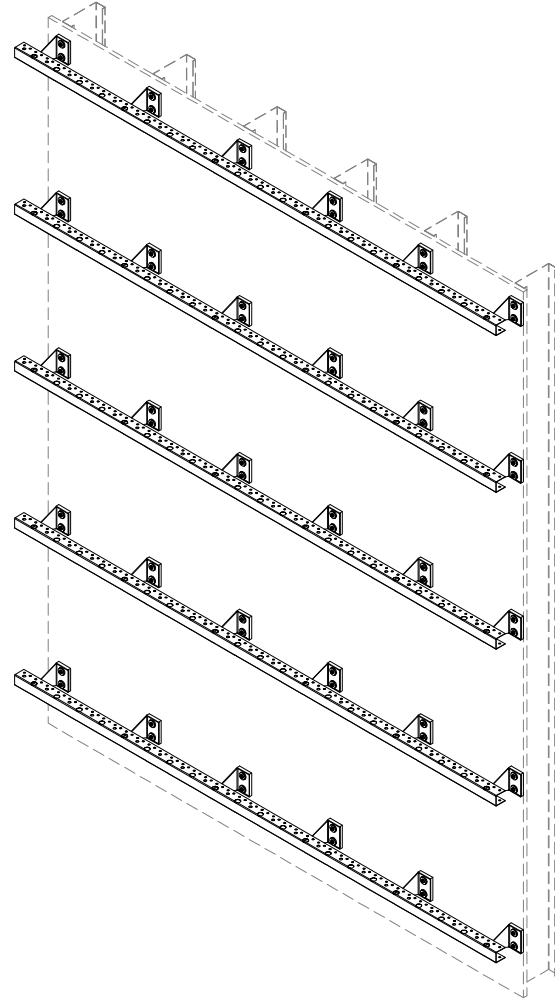
(EXTERIOR INSULATION OMITTED FOR CLARITY)

MINIMUM DEPTH: 4.25 INCHES

MAXIMUM DEPTH: 8.25 INCHES

(FACE OF SHEATHING TO FACE OF RAIL)

QUICK LINK: [SECTION VIEW](#) [PLAN VIEW](#)



#### HORIZONTAL ORIENTED SYSTEM

(EXTERIOR INSULATION OMITTED FOR CLARITY)

MINIMUM DEPTH: 3.5 INCHES

MAXIMUM DEPTH: 7.5 INCHES

(FACE OF SHEATHING TO FACE OF RAIL)

QUICK LINK: [SECTION VIEW](#) [PLAN VIEW](#)

THESE GUIDE DETAILS ARE PROVIDED FOR INFORMATION ONLY AND OUTLINE GENERAL/TYPICAL REQUIREMENTS FOR THE ATTACHMENT SYSTEM. PROJECT SPECIFIC ENGINEERING IS AVAILABLE TO ADDRESS STRUCTURAL ATTACHMENT (i.e. FASTENING PATTERN, ETC.). CONTACT KWS FOR FURTHER DETAILS. **ALL IMPLIED WARRANTIES INCLUDING MERCHANTABILITY & FITNESS FOR A PARTICULAR PURPOSE ARE EXPRESSLY EXCLUDED.**

www.knightwallsystems.com  
© Knight Wall Systems Deer Park, WA - 1.855.KWS.WALL  
PATENT US 8,429,866 B2, OTHERS PENDING - Drawn by: BN



KNIGHT MFI® System D-SERIES  
(HORIZONTAL ORIENTATION)  
RAINSCREEN ATTACHMENT

02/01/2016

SHEET 1 of 22

# GENERAL NOTES:

- KNIGHT WALL SYSTEMS (KWS) IS NOT RESPONSIBLE FOR INFORMATION SHOWN ON ALL DETAILS BEYOND KWS SPECIFIC SCOPE OF WORK QUOTED AND AS INDICATED ON CONTRACT DOCUMENTS.
- SYSTEM MAY BE INSTALLED OVER STEEL STUDS, WOOD STUDS, CMU OR CONCRETE SUBSTRATES (WITH USE OF APPROPRIATE WALL ANCHORS).
- PROJECT SPECIFIC ENGINEERING CAN BE PROVIDED BY KWS AND IS REQUIRED FOR A 10 YEAR LIMITED WRITTEN WARRANTY.
- KWS PROJECT SPECIFIC ENGINEERING, IF SUPPLIED, IS LIMITED TO THE LOAD CARRYING COMPONENTS OF THE PRODUCTS AND FASTENERS SUPPLIED BY KWS. THE BACK-UP WALL, WALL CLADDING PANELS AND/OR RAILS SUPPLIED BY OTHERS ARE WITH OTHER PARTIES.
- PLEASE READ OUR INSTALLATION AND DESIGN RECOMMENDATIONS DOCUMENT FOR FURTHER INFORMATION THAT IS IMPORTANT FOR YOUR SPECIFIC PROJECT AND PROPER INSTALLATION.
- DETAILS OF ADJACENT WORK ARE SHOWN FOR COMPLETENESS, CLARITY AND CONVENIENCE AS AN EXAMPLE OF A BUILT ENVIRONMENT ONLY.
- THE STRUCTURAL SUPPORT, BACK-UP WALL AND SUPER STRUCTURE DESIGN IS WITH OTHER PARTIES (SUCH AS, BUT NOT LIMITED TO, STEEL STUD WALL, etc.). THE RESPONSIBILITY FOR THESE OTHER ASSEMBLIES TO ACCOMMODATE ALL LOADS IMPOSED UPON THEM BY KWS PRODUCTS, OR ANY ATTACHMENT OR PANEL SYSTEM, SHOULD BE CONSIDERED.
- SOFT JOINTS, SEALANT AND FLASHING SPECIFICATIONS, DESIGN AND INSTALLATION ARE WITH OTHER PARTIES.
- WEATHER RESISTANT/AIR BARRIER AND INSULATION SPECIFICATIONS, DETAILING AND INSTALLATION, INCLUDING PENETRATIONS, ARE WITH OTHER PARTIES.
- INTERACTION BETWEEN DISSIMILAR MATERIALS, SUCH AS ALUMINUM AND STEEL, MUST BE SEPARATED VIA PLASTIC SHIMS, TAPE OR COATING TO PREVENT GALVANIC REACTION.
- USE SHEARING INSTRUMENTS FOR CUTTING METAL FRAMING COMPONENTS. SAWS ARE NOT RECOMMENDED, AS THE SPARKS PRODUCED DURING CUTTING WILL DAMAGE THE ANTI-CORROSION COATING. IF SPARKS ARE GENERATED DURING CUTTING, BE SURE THE PORTION OF THE COMPONENT TO BE INSTALLED ON THE BUILDING IS PROTECTED FROM SPARKS. THE SYSTEMS COMPONENTS MUST NOT BE CUT WHILE INSTALLED ON THE BUILDING UNLESS USING A SHEARING INSTRUMENT (I.E. SNIPS, etc.).
- USE OF IMPACT DRIVERS IS NOT RECOMMENDED WHEN DRIVING ANY FASTENER FOR THE SYSTEM.
- EXTERIOR INSULATION IS RECOMMENDED TO BE MINERAL FIBER INSULATION (MFI) FOR USE WITH THE MFI SYSTEM. RIGID FOAM INSULATION MAY BE USED, BUT IS NOT RECOMMENDED DUE TO BRACKET BASE DESIGN AND EXCESS LABOR FOR TRIMMING OR CUTTING OF RIGID FOAM. MINERAL FIBER INSULATION DOES NOT TYPICALLY REQUIRE ANY CUTTING AROUND THE BRACKET BASE FOR PROPER INSTALLATION.
- MFI, RevealRail, PanelRail and ThermaStop are trademarks of Knight Wall Systems, inc.
- THE DETAILS WITHIN THIS DRAWING PACKAGE ARE NOT INTENDED TO REPLACE PROJECT SPECIFIC ENGINEERING CALCULATIONS OR THE DESIGN SERVICES OF A REGISTERED PROFESSIONAL DESIGNER AND ARE SUBJECT TO CHANGE AT ANY TIME.

NOTICE: No freedom from any patent owned by Knight Wall Systems or others is to be inferred. Because use conditions and applicable laws may differ from one location to another and may change with time, Customer is responsible for determining whether products and the information in this document are appropriate for Customer's use and for ensuring that Customer's workplace and disposal practices are in compliance with applicable laws and other government enactments. Knight Wall Systems assumes no obligation or liability for the information in this document. **NO EXPRESS WARRANTIES ARE GIVEN EXCEPT FOR ANY APPLICABLE WRITTEN LIMITED WARRANTIES SPECIFICALLY PROVIDED BY KNIGHT WALL SYSTEMS. ALL IMPLIED WARRANTIES INCLUDING THOSE OF MERCHANTABILITY AND FITNESS FOR A PARTICULAR PURPOSE ARE EXPRESSLY EXCLUDED.** Building and/or construction practices unrelated to building materials could greatly affect moisture and the potential for mold formation. No material supplier including Knight Wall Systems can give assurance that mold will not develop in any specific system.

02/01/2016

THESE GUIDE DETAILS ARE PROVIDED FOR INFORMATION ONLY AND OUTLINE GENERAL/TYPICAL REQUIREMENTS FOR THE ATTACHMENT SYSTEM. PROJECT SPECIFIC ENGINEERING IS AVAILABLE TO ADDRESS STRUCTURAL ATTACHMENT (I.E. FASTENING PATTERN, ETC.). CONTACT KWS FOR FURTHER DETAILS. **ALL IMPLIED WARRANTIES INCLUDING MERCHANTABILITY & FITNESS FOR A PARTICULAR PURPOSE ARE EXPRESSLY EXCLUDED.**  
www.knightwallsystems.com  
© Knight Wall Systems Deer Park, WA - 1.855.KWS.WALL  
PATENT US 8,429,866 B2, OTHERS PENDING - Drawn by: BN



KNIGHT MFI® System D-SERIES  
(HORIZONTAL ORIENTATION)  
RAINSCREEN ATTACHMENT

SHEET 2 of 22

# TABLE OF CONTENTS:

PAGES HOTLINKED FOR  
EASY NAVIGATION!

1. TITLE PAGE
2. GENERAL NOTES
3. TABLE OF CONTENTS
4. ISOMETRIC VIEW OF ThermaBracket-D ASSEMBLY
5. 2"-3.5" ThermaBracket-D ISO, SIDE AND TOP VIEWS, OVERALL DIMENSIONS
6. 4"-6" ThermaBracket-D ISO, SIDE AND TOP VIEWS, OVERALL DIMENSIONS

## SINGLE RAIL (LAYER) SYSTEM

7. TYPICAL SECTION VIEW - HORIZONTAL D-Rail ONLY
8. TYPICAL PLAN VIEW - HORIZONTAL D-Rail ONLY
9. TYPICAL OUTSIDE CORNER - HORIZONTAL D-Rail ONLY
10. TYPICAL INSIDE CORNER - HORIZONTAL D-Rail ONLY
11. TYPICAL JAMB CONDITION - HORIZONTAL D-Rail ONLY
12. TYPICAL HEAD/SILL CONDITION - HORIZONTAL D-Rail ONLY
13. TYPICAL BASE OF WALL - HORIZONTAL D-Rail ONLY
14. TYPICAL DEFLECTION FLOOR JOINT - HORIZONTAL D-Rail ONLY

## DOUBLE RAIL (2 LAYER) SYSTEM

15. TYPICAL SECTION VIEW - HORIZONTAL D-Rail + VERTICAL PanelRail
16. TYPICAL PLAN VIEW - HORIZONTAL D-Rail + VERTICAL PanelRail
17. TYPICAL OUTSIDE CORNER - HORIZONTAL D-Rail + VERTICAL PanelRail
18. TYPICAL INSIDE CORNER - HORIZONTAL D-Rail + VERTICAL PanelRail
19. TYPICAL JAMB CONDITION - HORIZONTAL D-Rail + VERTICAL PanelRail
20. TYPICAL HEAD/SILL CONDITION - HORIZONTAL D-Rail + VERTICAL PanelRail
21. TYPICAL BASE OF WALL - HORIZONTAL D-Rail + VERTICAL PanelRail
22. TYPICAL DEFLECTION FLOOR JOINT - HORIZONTAL D-Rail + VERTICAL PanelRail

PLEASE FEEL FREE TO CONTACT KWS OR A LOCAL KWS REPRESENTATIVE FOR PROJECT SPECIFIC ASSISTANCE WITH DETAILS AND SPECIFYING.

1.855.KWS.WALL

[info@knightwallsystems.com](mailto:info@knightwallsystems.com)

[www.knightwallsystems.com](http://www.knightwallsystems.com)

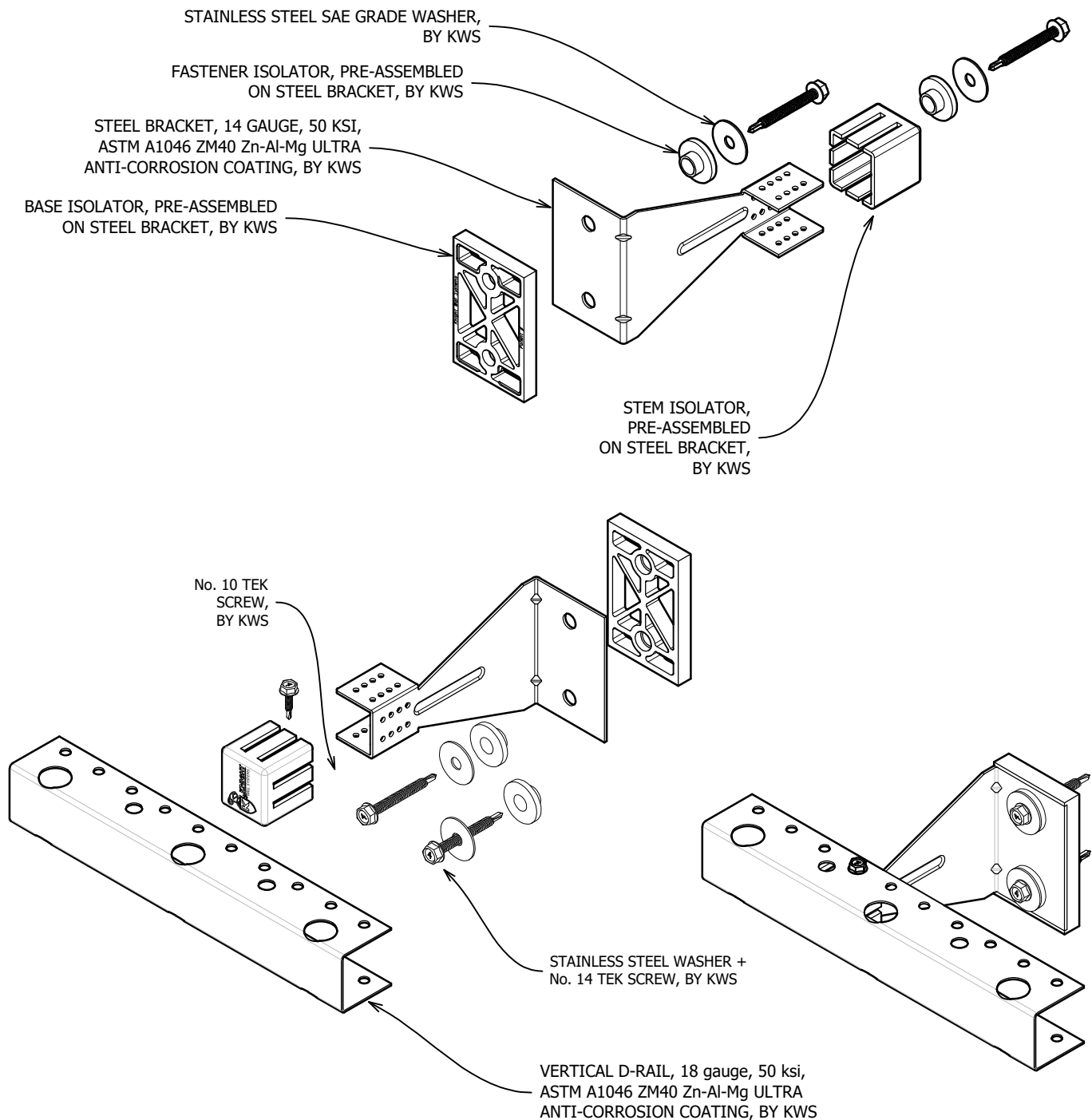
02/01/2016

THESE GUIDE DETAILS ARE PROVIDED FOR INFORMATION ONLY AND OUTLINE GENERAL/TYPICAL REQUIREMENTS FOR THE ATTACHMENT SYSTEM. PROJECT SPECIFIC ENGINEERING IS AVAILABLE TO ADDRESS STRUCTURAL ATTACHMENT (i.e. FASTENING PATTERN, ETC.). CONTACT KWS FOR FURTHER DETAILS. **ALL IMPLIED WARRANTIES INCLUDING MERCHANTABILITY & FITNESS FOR A PARTICULAR PURPOSE ARE EXPRESSLY EXCLUDED.**  
[www.knightwallsystems.com](http://www.knightwallsystems.com)  
© Knight Wall Systems Deer Park, WA - 1.855.KWS.WALL  
PATENT US 8,429,866 B2, OTHERS PENDING - Drawn by: BN



KNIGHT MFI® System D-SERIES  
(HORIZONTAL ORIENTATION)  
RAINSCREEN ATTACHMENT

SHEET 3 of 22



\*16 GAUGE RAILS, FACTORY BLACK COATED RAILS & STAINLESS STEEL (304) AVAILABLE

\*MAXIMUM ALLOWABLE SPACING AND DEAD LOAD (WEIGHT OF CLADDING) IS BASED ON THE TOTAL LOAD (DEAD + LIVE) ACTING ON THE ASSEMBLY, BRACKETS AND CONNECTIONS.

4

## MFI SYSTEM ASSEMBLY - ISO VIEW

SCALE: NTS

[BACK TO TABLE OF CONTENTS](#)

02/01/2016

THESE GUIDE DETAILS ARE PROVIDED FOR INFORMATION ONLY AND OUTLINE GENERAL/TYPICAL REQUIREMENTS FOR THE ATTACHMENT SYSTEM. PROJECT SPECIFIC ENGINEERING IS AVAILABLE TO ADDRESS STRUCTURAL ATTACHMENT (i.e. FASTENING PATTERN, ETC.). CONTACT KWS FOR FURTHER DETAILS. **ALL IMPLIED WARRANTIES INCLUDING MERCHANTABILITY & FITNESS FOR A PARTICULAR PURPOSE ARE EXPRESSLY EXCLUDED.**

[www.knightwallsystems.com](http://www.knightwallsystems.com)

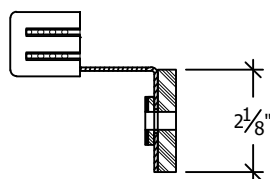
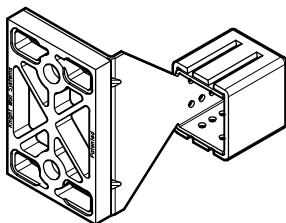
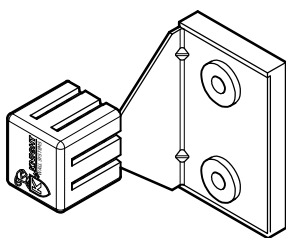
© Knight Wall Systems Deer Park, WA - 1.855.KWS.WALL

PATENT US 8,429,866 B2, OTHERS PENDING - Drawn by: BN & MW

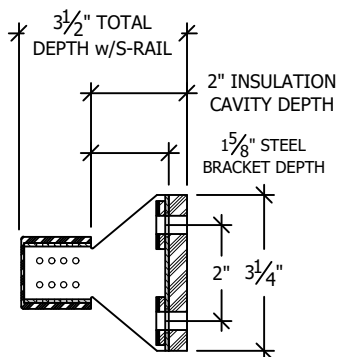


## KNIGHT MFI® System D-SERIES (HORIZONTAL ORIENTATION) RAINSCREEN ATTACHMENT

SHEET 4 of 22



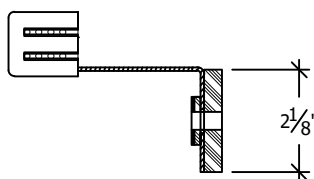
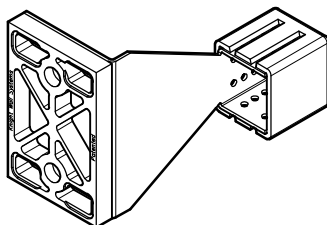
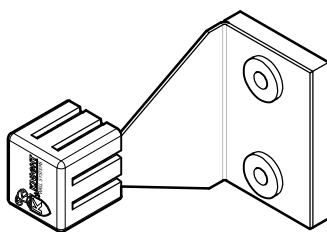
TOP/PLAN VIEW



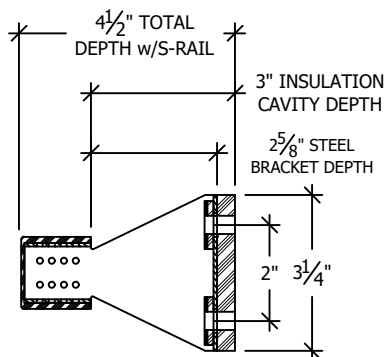
SIDE/SECTION VIEW

### 2" ThermaBracket-D

OVERALL DEPTH  
w/D-Rail ONLY: 3.5"  
w/D-Rail + PanelRail: 4.25"



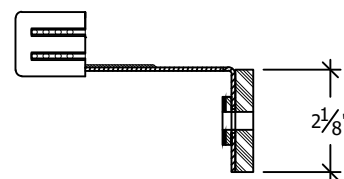
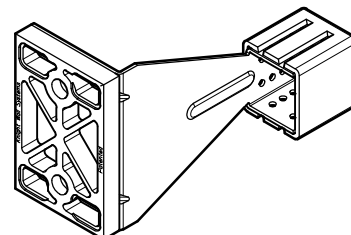
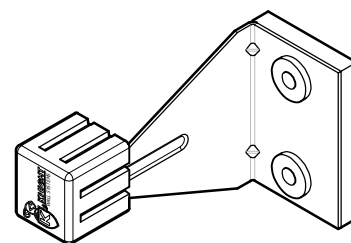
TOP/PLAN VIEW



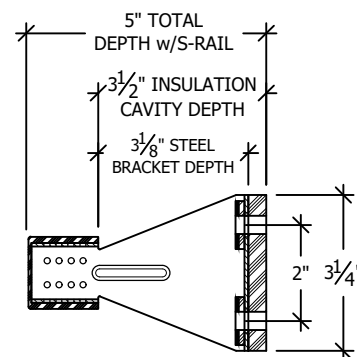
SIDE/SECTION VIEW

### 3" ThermaBracket-D

OVERALL DEPTH  
w/D-Rail ONLY: 4.5"  
w/D-Rail + PanelRail: 5.25"



TOP/PLAN VIEW



SIDE/SECTION VIEW

### 3.5" ThermaBracket-D

OVERALL DEPTH  
w/D-Rail ONLY: 5"  
w/D-Rail + PanelRail: 5.75"

\*16 GAUGE RAILS, FACTORY BLACK COATED RAILS & STAINLESS STEEL (304) AVAILABLE

\*MAXIMUM ALLOWABLE SPACING AND DEAD LOAD (WEIGHT OF CLADDING) IS BASED ON THE TOTAL LOAD (DEAD + LIVE) ACTING ON THE ASSEMBLY, BRACKETS AND CONNECTIONS.

5

## ThermaBracket SIZES - 2"-3.5"

SCALE: 3" = 1'-0"

BACK TO TABLE OF CONTENTS

02/01/2016

THESE GUIDE DETAILS ARE PROVIDED FOR INFORMATION ONLY AND OUTLINE GENERAL/TYPICAL REQUIREMENTS FOR THE ATTACHMENT SYSTEM. PROJECT SPECIFIC ENGINEERING IS AVAILABLE TO ADDRESS STRUCTURAL ATTACHMENT (i.e. FASTENING PATTERN, ETC.). CONTACT KWS FOR FURTHER DETAILS. **ALL IMPLIED WARRANTIES INCLUDING MERCHANTABILITY & FITNESS FOR A PARTICULAR PURPOSE ARE EXPRESSLY EXCLUDED.**

www.knightwallsystems.com

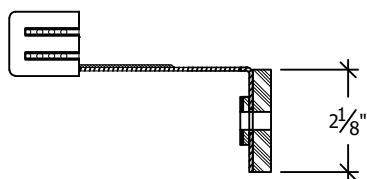
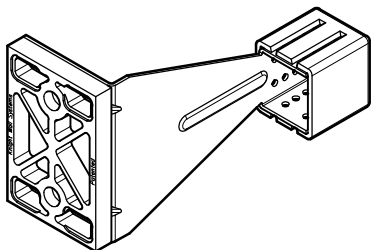
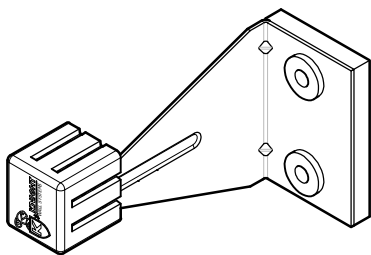
© Knight Wall Systems Deer Park, WA - 1.855.KWS.WALL

PATENT US 8,429,866 B2, OTHERS PENDING - Drawn by: BN & MW

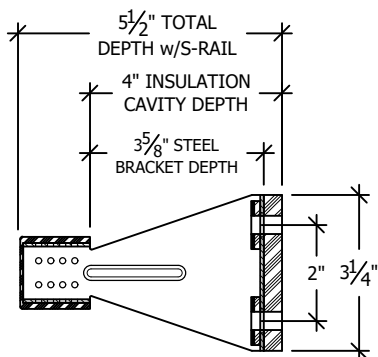


## KNIGHT MFI® System D-SERIES (HORIZONTAL ORIENTATION) RAINSCREEN ATTACHMENT

SHEET 5 of 22



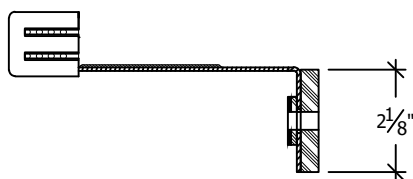
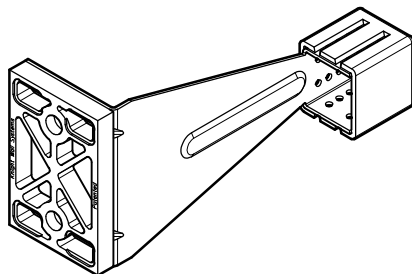
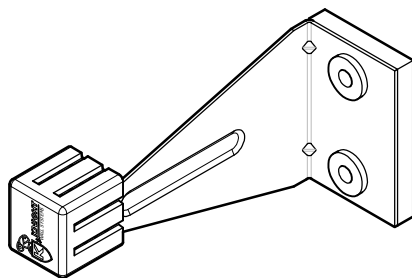
TOP/PLAN VIEW



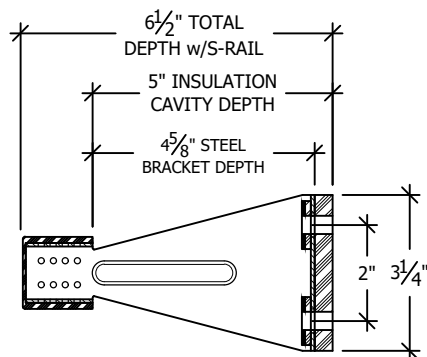
SIDE/SECTION VIEW

#### **4" ThermaBracket-D**

OVERALL DEPTH  
w/D-Rail ONLY: 5.5"  
w/D-Rail + PanelRail: 6.25"



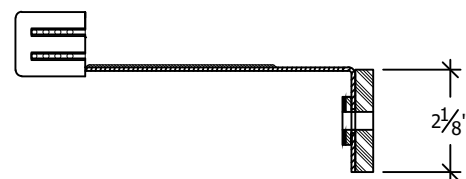
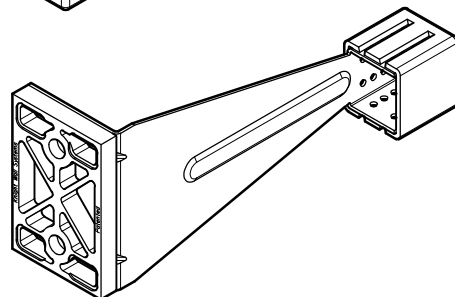
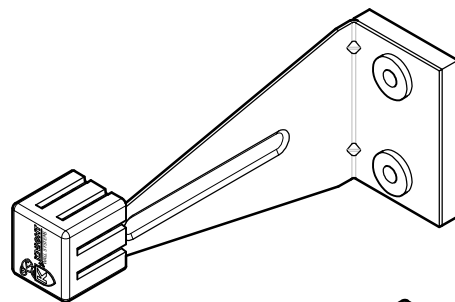
TOP/PLAN VIEW



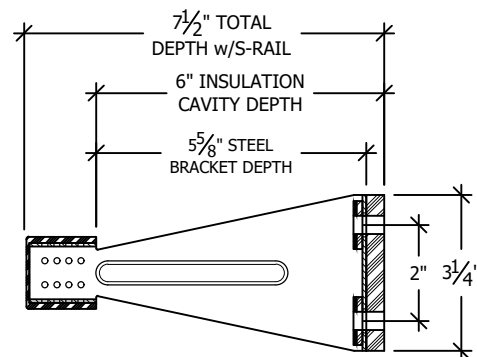
SIDE/SECTION VIEW

#### **5" ThermaBracket-D**

OVERALL DEPTH  
w/D-Rail ONLY: 6.5"  
w/D-Rail + PanelRail: 7.25"



TOP/PLAN VIEW



SIDE/SECTION VIEW

#### **6" ThermaBracket-D**

OVERALL DEPTH  
w/D-Rail ONLY: 7.5"  
w/D-Rail + PanelRail: 8.25"

\*16 GAUGE RAILS, FACTORY BLACK COATED RAILS & STAINLESS STEEL (304) AVAILABLE

\*MAXIMUM ALLOWABLE SPACING AND DEAD LOAD (WEIGHT OF CLADDING) IS BASED ON THE TOTAL LOAD (DEAD + LIVE) ACTING ON THE ASSEMBLY, BRACKETS AND CONNECTIONS.

**6**

**ThermaBracket SIZES - 4"-6"**

SCALE: 3" = 1'-0"

[BACK TO TABLE OF CONTENTS](#)

02/01/2016

THESE GUIDE DETAILS ARE PROVIDED FOR INFORMATION ONLY AND OUTLINE GENERAL/TYPICAL REQUIREMENTS FOR THE ATTACHMENT SYSTEM. PROJECT SPECIFIC ENGINEERING IS AVAILABLE TO ADDRESS STRUCTURAL ATTACHMENT (i.e. FASTENING PATTERN, ETC.). CONTACT KWS FOR FURTHER DETAILS. **ALL IMPLIED WARRANTIES INCLUDING MERCHANTABILITY & FITNESS FOR A PARTICULAR PURPOSE ARE EXPRESSLY EXCLUDED.**

[www.knightwallsystems.com](http://www.knightwallsystems.com)

© Knight Wall Systems Deer Park, WA - 1.855.KWS.WALL

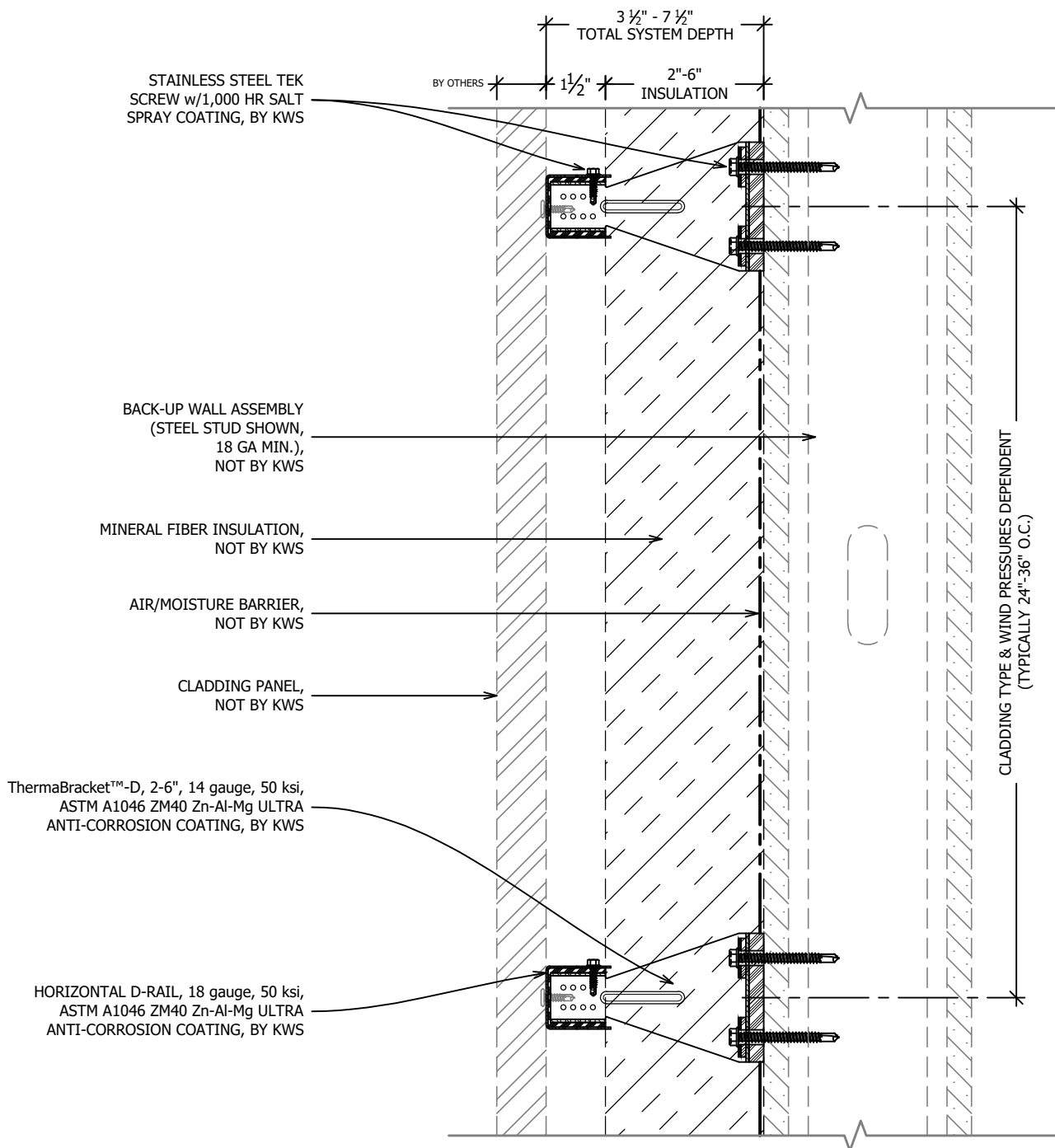
PATENT US 8,429,866 B2, OTHERS PENDING - Drawn by: BN & MW



**KNIGHT MFI® System D-SERIES  
(HORIZONTAL ORIENTATION)  
RAINSCREEN ATTACHMENT**

SHEET 6 of 22





SYSTEM MAY BE INSTALLED OVER STEEL STUDS, WOOD STUDS, CMU OR CONCRETE SUBSTRATES (WITH USE OF APPROPRIATE WALL ANCHORS).

\*16 GAUGE RAILS, FACTORY BLACK COATED RAILS & STAINLESS STEEL (304) AVAILABLE

\*MAXIMUM ALLOWABLE SPACING AND DEAD LOAD (WEIGHT OF CLADDING) IS BASED ON THE TOTAL LOAD (DEAD + LIVE) ACTING ON THE ASSEMBLY, BRACKETS AND CONNECTIONS.

7

TYPICAL SECTION VIEW - D-Rail ONLY

SCALE: 3" = 1'-0"

BACK TO TABLE OF CONTENTS

02/01/2016

THESE GUIDE DETAILS ARE PROVIDED FOR INFORMATION ONLY AND OUTLINE GENERAL/TYPICAL REQUIREMENTS FOR THE ATTACHMENT SYSTEM. PROJECT SPECIFIC ENGINEERING IS AVAILABLE TO ADDRESS STRUCTURAL ATTACHMENT (i.e. FASTENING PATTERN, ETC.). CONTACT KWS FOR FURTHER DETAILS. **ALL IMPLIED WARRANTIES INCLUDING MERCHANTABILITY & FITNESS FOR A PARTICULAR PURPOSE ARE EXPRESSLY EXCLUDED.**

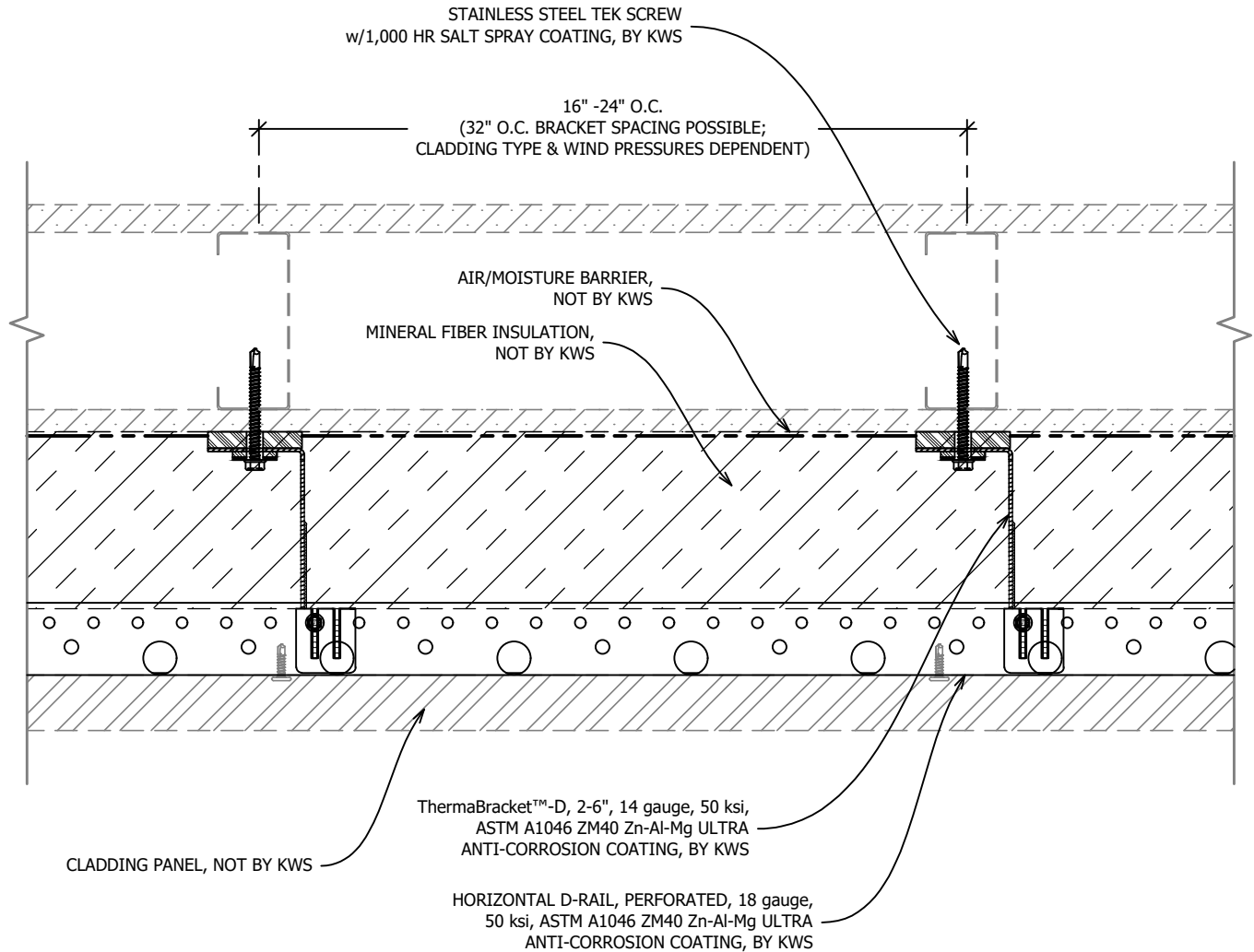
www.knightwallsystems.com  
© Knight Wall Systems Deer Park, WA - 1.855.KWS.WALL  
PATENT US 8,429,866 B2, OTHERS PENDING - Drawn by: BN



KNIGHT MFI™ System D-SERIES  
(HORIZONTAL ORIENTATION)  
RAINSCREEN ATTACHMENT

SHEET 7 of 22

SYSTEM MAY BE INSTALLED OVER STEEL STUDS,  
WOOD STUDS, CMU OR CONCRETE SUBSTRATES  
(WITH USE OF APPROPRIATE WALL ANCHORS).



\*16 GAUGE RAILS, FACTORY BLACK COATED RAILS & STAINLESS STEEL  
(304) AVAILABLE

\*MAXIMUM ALLOWABLE SPACING AND DEAD LOAD (WEIGHT OF  
CLADDING) IS BASED ON THE TOTAL LOAD (DEAD + LIVE) ACTING ON THE  
ASSEMBLY, BRACKETS AND CONNECTIONS.

8

## TYPICAL PLAN VIEW - D-Rail ONLY

SCALE: 3" = 1'-0"

BACK TO TABLE OF CONTENTS

02/01/2016

THESE GUIDE DETAILS ARE PROVIDED FOR INFORMATION ONLY  
AND OUTLINE GENERAL/TYPICAL REQUIREMENTS FOR THE  
ATTACHMENT SYSTEM. PROJECT SPECIFIC ENGINEERING IS  
AVAILABLE TO ADDRESS STRUCTURAL ATTACHMENT (i.e.  
FASTENING PATTERN, ETC.). CONTACT KWS FOR FURTHER  
DETAILS. **ALL IMPLIED WARRANTIES INCLUDING  
MERCHANTABILITY & FITNESS FOR A PARTICULAR  
PURPOSE ARE EXPRESSLY EXCLUDED.**

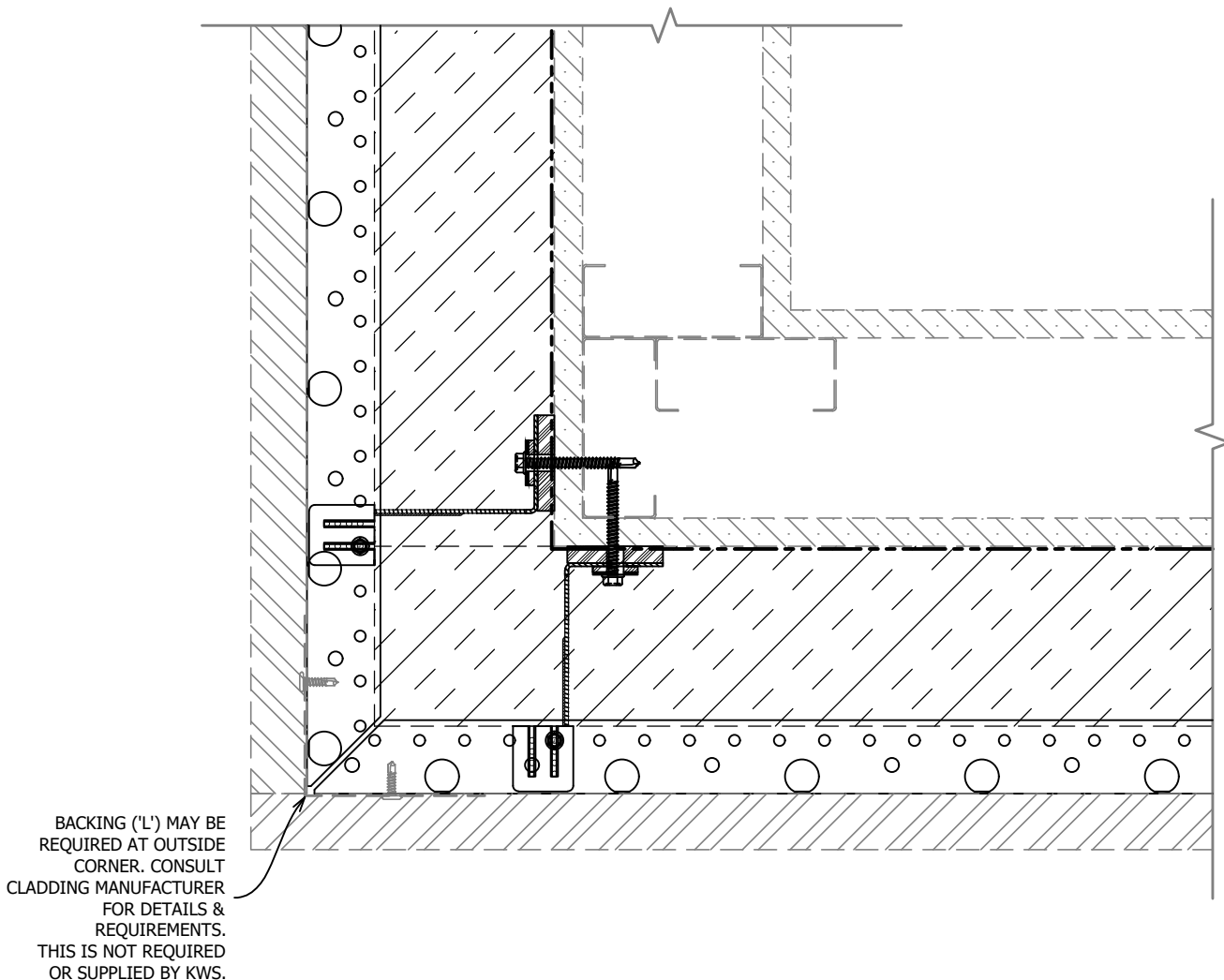
www.knightwallsystems.com  
© Knight Wall Systems Deer Park, WA - 1.855.KWS.WALL  
PATENT US 8,429,866 B2, OTHERS PENDING - Drawn by: BN



## KNIGHT MFI™ System D-SERIES (HORIZONTAL ORIENTATION) RAINSCREEN ATTACHMENT

SHEET 8 of 22





\*16 GAUGE RAILS, FACTORY BLACK COATED RAILS & STAINLESS STEEL (304) AVAILABLE

\*MAXIMUM ALLOWABLE SPACING AND DEAD LOAD (WEIGHT OF CLADDING) IS BASED ON THE TOTAL LOAD (DEAD + LIVE) ACTING ON THE ASSEMBLY, BRACKETS AND CONNECTIONS.

9

## TYPICAL OUTSIDE CORNER

SCALE: 3" = 1'-0"

[BACK TO TABLE OF CONTENTS](#)

02/01/2016

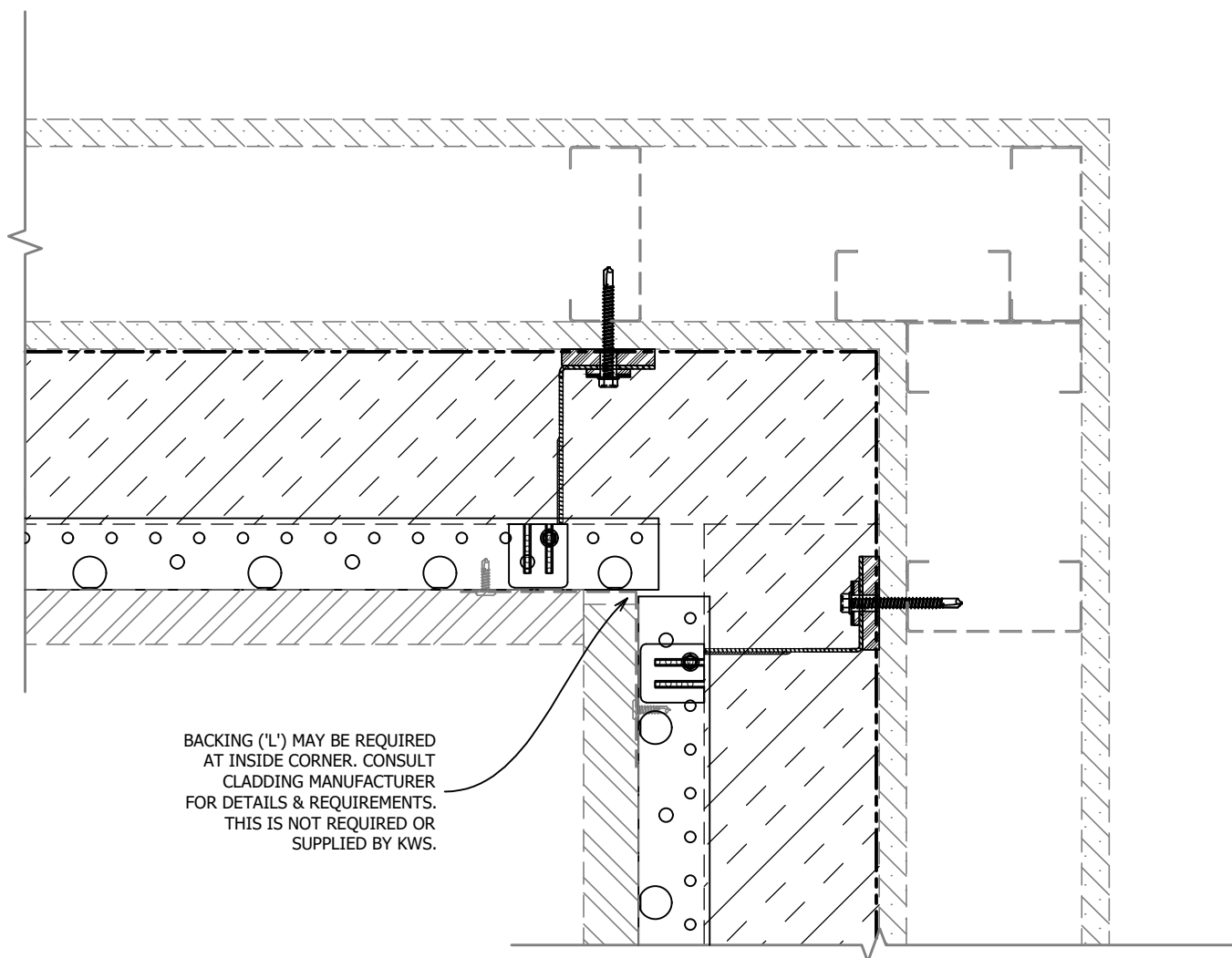
THESE GUIDE DETAILS ARE PROVIDED FOR INFORMATION ONLY AND OUTLINE GENERAL/TYPICAL REQUIREMENTS FOR THE ATTACHMENT SYSTEM. PROJECT SPECIFIC ENGINEERING IS AVAILABLE TO ADDRESS STRUCTURAL ATTACHMENT (i.e. FASTENING PATTERN, ETC.). CONTACT KWS FOR FURTHER DETAILS. **ALL IMPLIED WARRANTIES INCLUDING MERCHANTABILITY & FITNESS FOR A PARTICULAR PURPOSE ARE EXPRESSLY EXCLUDED.**

www.knightwallsystems.com  
© Knight Wall Systems Deer Park, WA - 1.855.KWS.WALL  
PATENT US 8,429,866 B2, OTHERS PENDING - Drawn by: BN



## KNIGHT MFI™ System D-SERIES (HORIZONTAL ORIENTATION) RAINSCREEN ATTACHMENT

SHEET 9 of 22



\*16 GAUGE RAILS, FACTORY BLACK COATED RAILS & STAINLESS STEEL (304) AVAILABLE

\*MAXIMUM ALLOWABLE SPACING AND DEAD LOAD (WEIGHT OF CLADDING) IS BASED ON THE TOTAL LOAD (DEAD + LIVE) ACTING ON THE ASSEMBLY, BRACKETS AND CONNECTIONS.

10

## TYPICAL INSIDE CORNER

SCALE: 3" = 1'-0"

[BACK TO TABLE OF CONTENTS](#)

02/01/2016

THESE GUIDE DETAILS ARE PROVIDED FOR INFORMATION ONLY AND OUTLINE GENERAL/TYPICAL REQUIREMENTS FOR THE ATTACHMENT SYSTEM. PROJECT SPECIFIC ENGINEERING IS AVAILABLE TO ADDRESS STRUCTURAL ATTACHMENT (i.e. FASTENING PATTERN, ETC.). CONTACT KWS FOR FURTHER DETAILS. **ALL IMPLIED WARRANTIES INCLUDING MERCHANTABILITY & FITNESS FOR A PARTICULAR PURPOSE ARE EXPRESSLY EXCLUDED.**

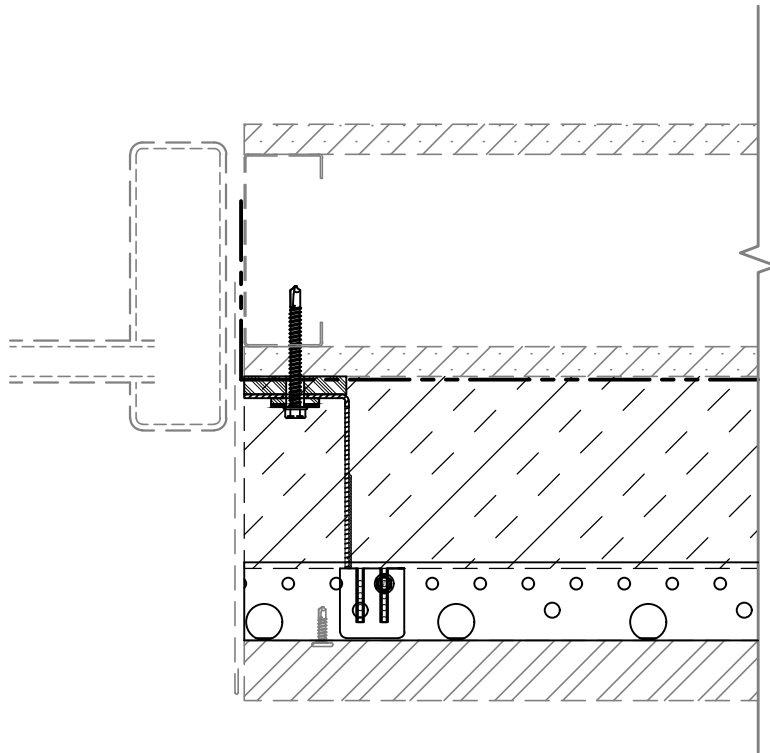
[www.knightwallsystems.com](http://www.knightwallsystems.com)

© Knight Wall Systems Deer Park, WA - 1.855.KWS.WALL  
PATENT US 8,429,866 B2, OTHERS PENDING - Drawn by: BN



## KNIGHT MFI™ System D-SERIES (HORIZONTAL ORIENTATION) RAINSCREEN ATTACHMENT

SHEET 10 of 22



\* FLASHING DETAILS VARY BASED ON WINDOW TYPE,  
POSITION (INSET VS FLUSH) AND CLADDING TYPE.  
FLASHING IS NOT BY KWS.

\*16 GAUGE RAILS, FACTORY BLACK COATED RAILS & STAINLESS STEEL  
(304) AVAILABLE

\*MAXIMUM ALLOWABLE SPACING AND DEAD LOAD (WEIGHT OF  
CLADDING) IS BASED ON THE TOTAL LOAD (DEAD + LIVE) ACTING ON THE  
ASSEMBLY, BRACKETS AND CONNECTIONS.

11

## TYPICAL JAMB CONDITION

SCALE: 3" = 1'-0"

[BACK TO TABLE OF CONTENTS](#)

02/01/2016

THESE GUIDE DETAILS ARE PROVIDED FOR INFORMATION ONLY  
AND OUTLINE GENERAL/TYPICAL REQUIREMENTS FOR THE  
ATTACHMENT SYSTEM. PROJECT SPECIFIC ENGINEERING IS  
AVAILABLE TO ADDRESS STRUCTURAL ATTACHMENT (i.e.  
FASTENING PATTERN, ETC.). CONTACT KWS FOR FURTHER  
DETAILS. **ALL IMPLIED WARRANTIES INCLUDING  
MERCHANTABILITY & FITNESS FOR A PARTICULAR  
PURPOSE ARE EXPRESSLY EXCLUDED.**

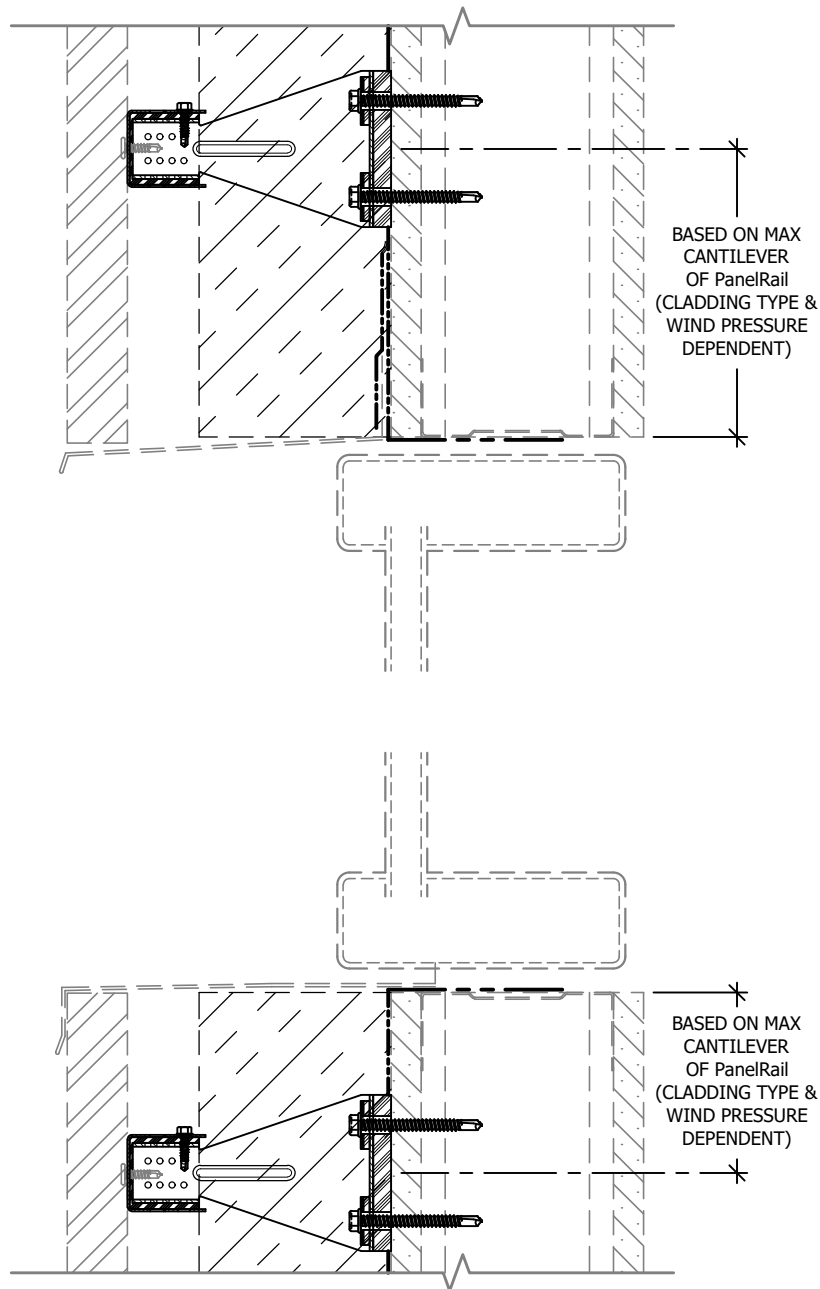
[www.knightwallsystems.com](http://www.knightwallsystems.com)

© Knight Wall Systems Deer Park, WA - 1.855.KWS.WALL  
PATENT US 8,429,866 B2, OTHERS PENDING - Drawn by: BN



## KNIGHT MFI™ System D-SERIES (HORIZONTAL ORIENTATION) RAINSCREEN ATTACHMENT

SHEET 11 of 22



\* FLASHING DETAILS VARY BASED ON WINDOW TYPE, POSITION (INSET VS FLUSH) AND CLADDING TYPE. FLASHING IS NOT BY KWS.

\*16 GAUGE RAILS, FACTORY BLACK COATED RAILS & STAINLESS STEEL (304) AVAILABLE

\*MAXIMUM ALLOWABLE SPACING AND DEAD LOAD (WEIGHT OF CLADDING) IS BASED ON THE TOTAL LOAD (DEAD + LIVE) ACTING ON THE ASSEMBLY, BRACKETS AND CONNECTIONS.

12

## TYPICAL HEAD & SILL CONDITION

SCALE: 3" = 1'-0"

[BACK TO TABLE OF CONTENTS](#)

02/01/2016

THESE GUIDE DETAILS ARE PROVIDED FOR INFORMATION ONLY AND OUTLINE GENERAL/TYPICAL REQUIREMENTS FOR THE ATTACHMENT SYSTEM. PROJECT SPECIFIC ENGINEERING IS AVAILABLE TO ADDRESS STRUCTURAL ATTACHMENT (i.e. FASTENING PATTERN, ETC.). CONTACT KWS FOR FURTHER DETAILS. **ALL IMPLIED WARRANTIES INCLUDING MERCHANTABILITY & FITNESS FOR A PARTICULAR PURPOSE ARE EXPRESSLY EXCLUDED.**

[www.knightwallsystems.com](http://www.knightwallsystems.com)

© Knight Wall Systems Deer Park, WA - 1.855.KWS.WALL

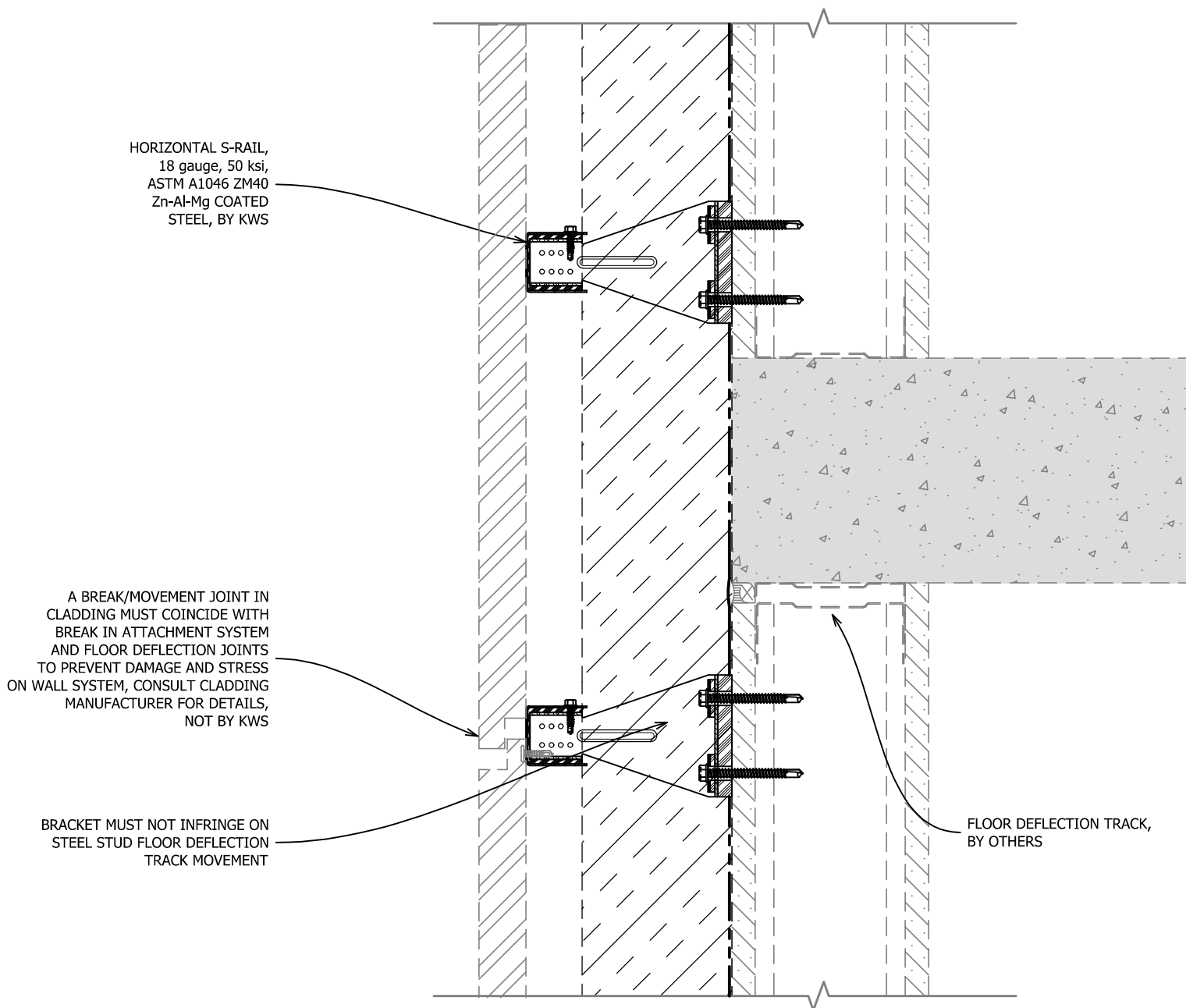
PATENT US 8,429,866 B2, OTHERS PENDING - Drawn by: BN



## KNIGHT MFI™ System D-SERIES (HORIZONTAL ORIENTATION) RAINSCREEN ATTACHMENT

SHEET 12 of 22





\*16 GAUGE RAILS, FACTORY BLACK COATED RAILS & STAINLESS STEEL (304) AVAILABLE

\*MAXIMUM ALLOWABLE SPACING AND DEAD LOAD (WEIGHT OF CLADDING) IS BASED ON THE TOTAL LOAD (DEAD + LIVE) ACTING ON THE ASSEMBLY, BRACKETS AND CONNECTIONS.

## 14 TYPICAL FLOOR DEFLECTION JOINT

SCALE: 3" = 1'-0"

BACK TO TABLE OF CONTENTS

02/01/2016

THESE GUIDE DETAILS ARE PROVIDED FOR INFORMATION ONLY AND OUTLINE GENERAL/TYPICAL REQUIREMENTS FOR THE ATTACHMENT SYSTEM. PROJECT SPECIFIC ENGINEERING IS AVAILABLE TO ADDRESS STRUCTURAL ATTACHMENT (i.e. FASTENING PATTERN, ETC.). CONTACT KWS FOR FURTHER DETAILS. **ALL IMPLIED WARRANTIES INCLUDING MERCHANTABILITY & FITNESS FOR A PARTICULAR PURPOSE ARE EXPRESSLY EXCLUDED.**

www.knightwallsystems.com

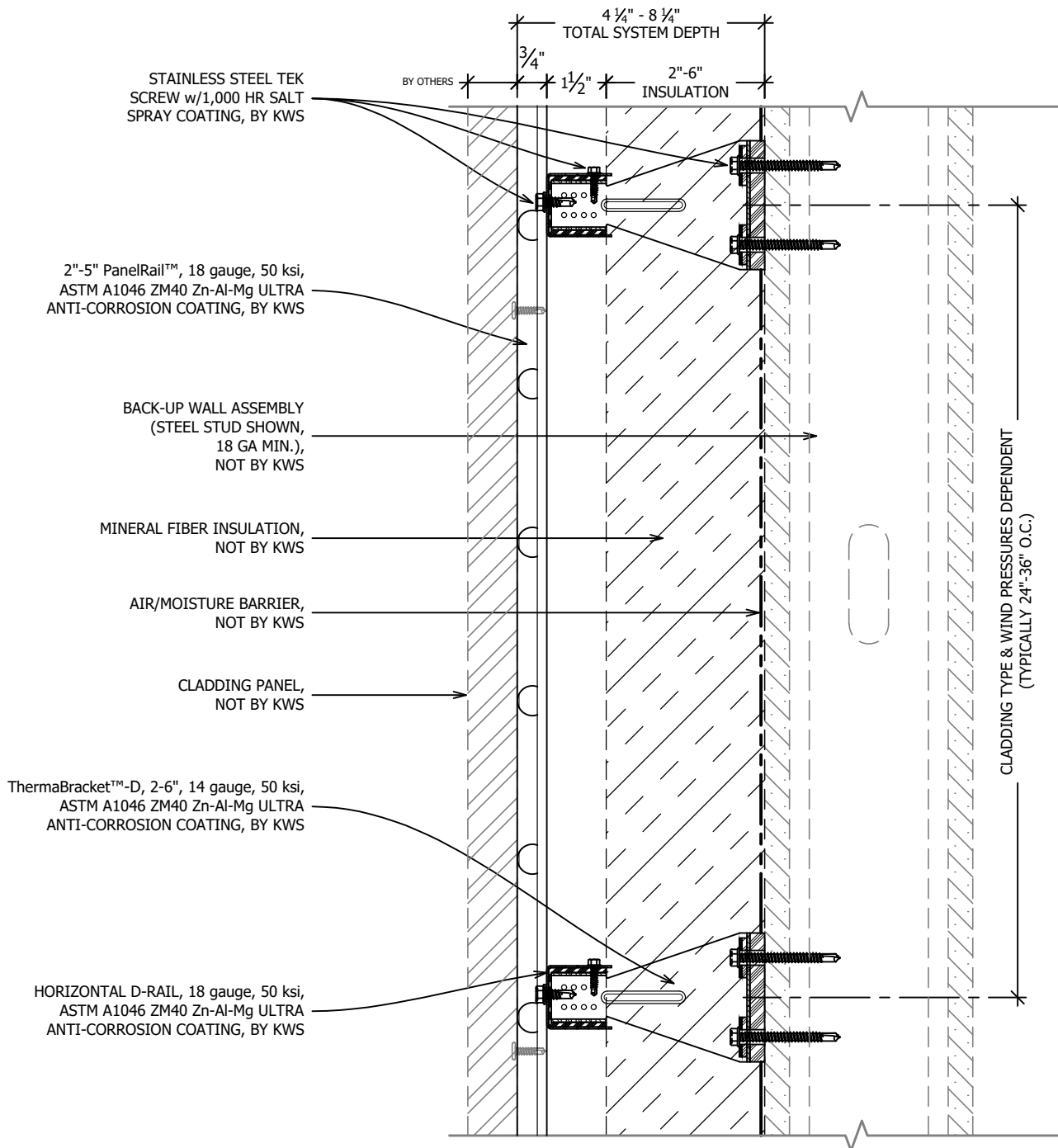
© Knight Wall Systems Deer Park, WA - 1.855.KWS.WALL  
PATENT US 8,429,866 B2, OTHERS PENDING - Drawn by: BN



KNIGHT MFI™ System D-SERIES  
(HORIZONTAL ORIENTATION)  
RAINSCREEN ATTACHMENT

SHEET 14 of 22





SYSTEM MAY BE INSTALLED OVER STEEL STUDS, WOOD STUDS, CMU OR CONCRETE SUBSTRATES (WITH USE OF APPROPRIATE WALL ANCHORS).

\*16 GAUGE RAILS, FACTORY BLACK COATED RAILS & STAINLESS STEEL (304) AVAILABLE

\*MAXIMUM ALLOWABLE SPACING AND DEAD LOAD (WEIGHT OF CLADDING) IS BASED ON THE TOTAL LOAD (DEAD + LIVE) ACTING ON THE ASSEMBLY, BRACKETS AND CONNECTIONS.

15

TYPICAL SECTION VIEW - D-Rail + PanelRail

SCALE: 3" = 1'-0"

BACK TO TABLE OF CONTENTS

02/01/2016

THESE GUIDE DETAILS ARE PROVIDED FOR INFORMATION ONLY AND OUTLINE GENERAL/TYPICAL REQUIREMENTS FOR THE ATTACHMENT SYSTEM. PROJECT SPECIFIC ENGINEERING IS AVAILABLE TO ADDRESS STRUCTURAL ATTACHMENT (i.e. FASTENING PATTERN, ETC.). CONTACT KWS FOR FURTHER DETAILS. **ALL IMPLIED WARRANTIES INCLUDING MERCHANTABILITY & FITNESS FOR A PARTICULAR PURPOSE ARE EXPRESSLY EXCLUDED.**

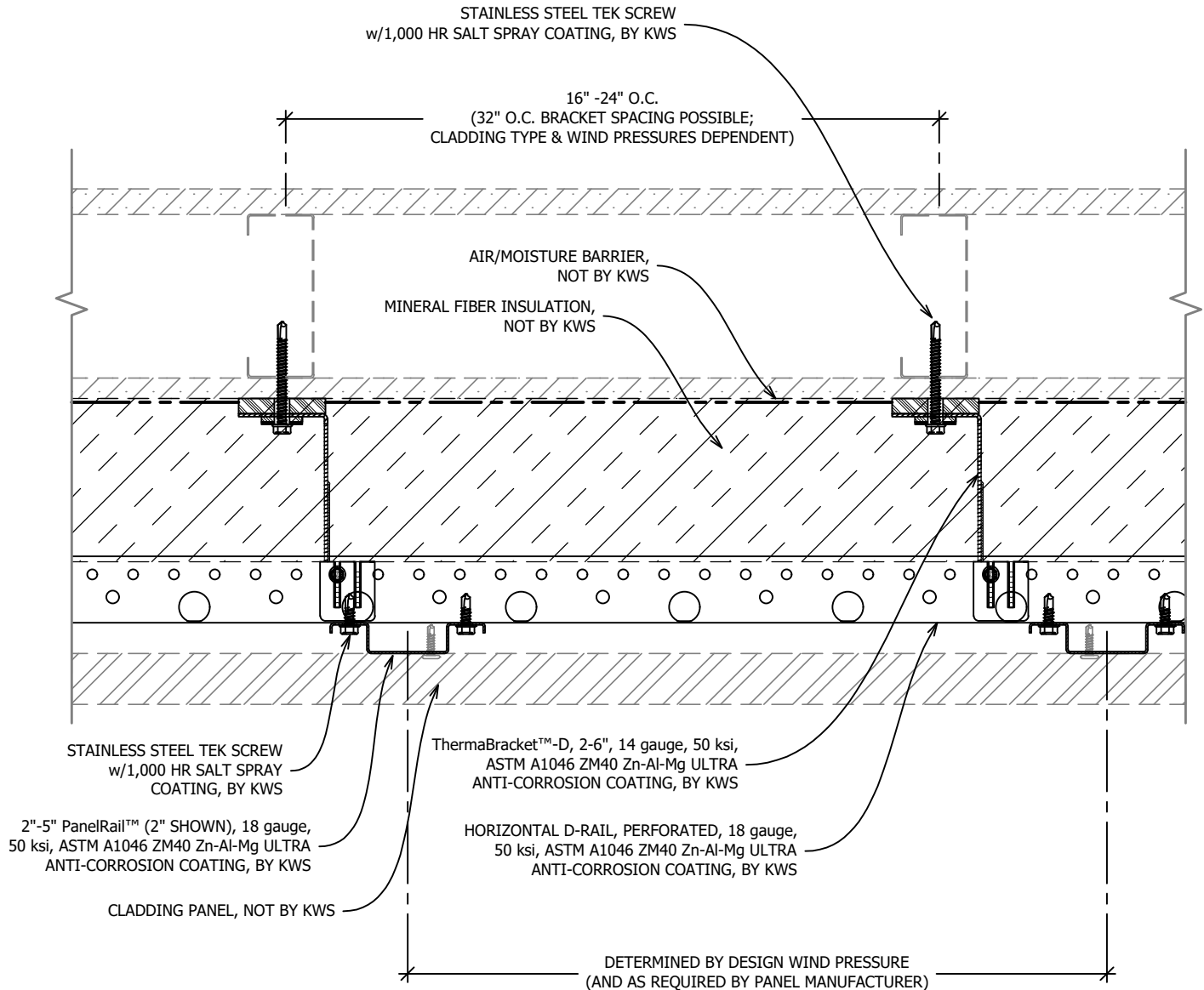
www.knightwallsystems.com  
© Knight Wall Systems Deer Park, WA - 1.855.KWS.WALL  
PATENT US 8,429,866 B2, OTHERS PENDING - Drawn by: BN



KNIGHT MFI™ System D-SERIES  
(HORIZONTAL ORIENTATION)  
RAINSCREEN ATTACHMENT

SHEET 15 of 22

SYSTEM MAY BE INSTALLED OVER STEEL STUDS,  
WOOD STUDS, CMU OR CONCRETE SUBSTRATES  
(WITH USE OF APPROPRIATE WALL ANCHORS).



\*16 GAUGE RAILS, FACTORY BLACK COATED RAILS & STAINLESS STEEL  
(304) AVAILABLE

\*MAXIMUM ALLOWABLE SPACING AND DEAD LOAD (WEIGHT OF  
CLADDING) IS BASED ON THE TOTAL LOAD (DEAD + LIVE) ACTING ON THE  
ASSEMBLY, BRACKETS AND CONNECTIONS.

16

TYPICAL PLAN VIEW - D-Rail + PanelRail

SCALE: 3" = 1'-0"

BACK TO TABLE OF CONTENTS

02/01/2016

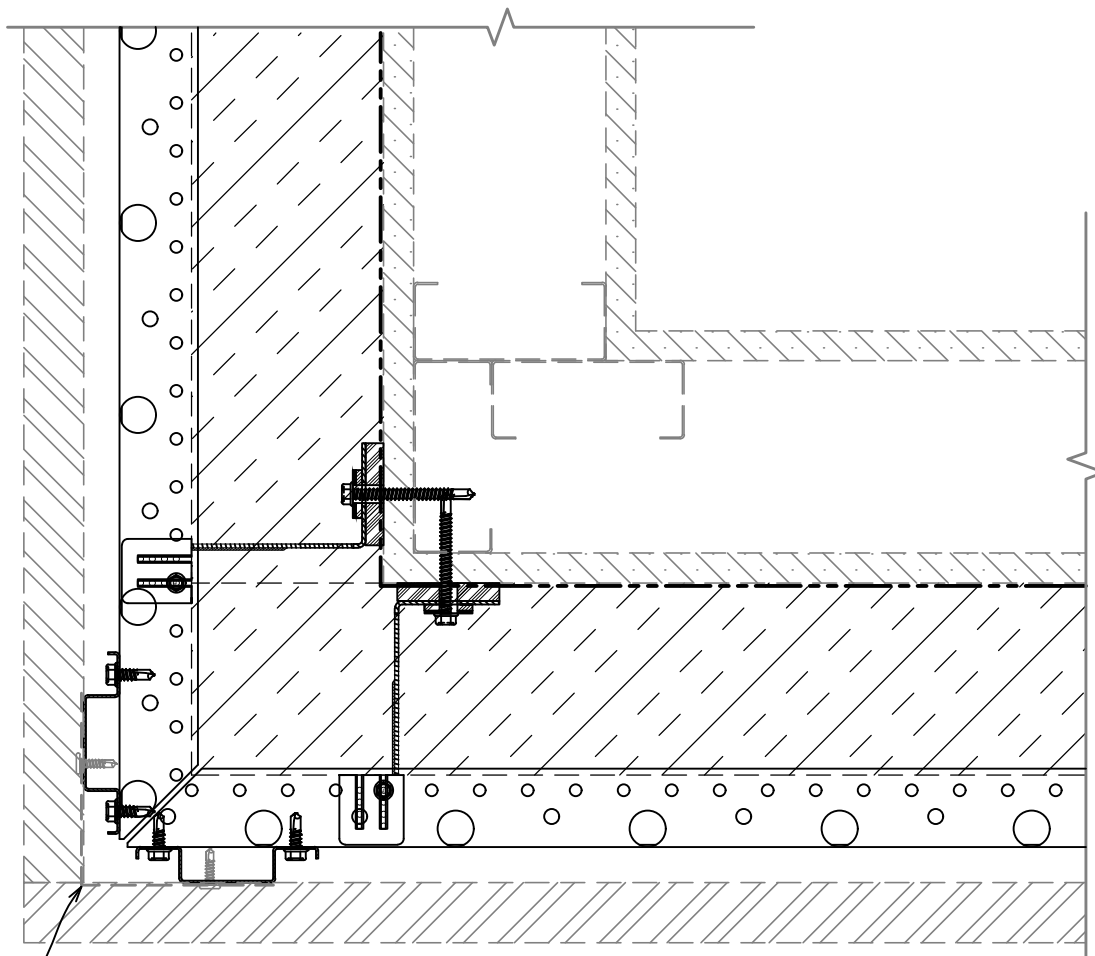
THESE GUIDE DETAILS ARE PROVIDED FOR INFORMATION ONLY  
AND OUTLINE GENERAL/TYPICAL REQUIREMENTS FOR THE  
ATTACHMENT SYSTEM. PROJECT SPECIFIC ENGINEERING (i.e.  
AVAILABLE TO ADDRESS STRUCTURAL ATTACHMENT (i.e.  
FASTENING PATTERN, ETC.). CONTACT KWS FOR FURTHER  
DETAILS. **ALL IMPLIED WARRANTIES INCLUDING  
MERCHANTABILITY & FITNESS FOR A PARTICULAR  
PURPOSE ARE EXPRESSLY EXCLUDED.**

www.knightwallsystems.com  
© Knight Wall Systems Deer Park, WA - 1.855.KWS.WALL  
PATENT US 8,429,866 B2, OTHERS PENDING - Drawn by: BN



KNIGHT MFI™ System D-SERIES  
(HORIZONTAL ORIENTATION)  
RAINSCREEN ATTACHMENT

SHEET 16 of 22



BACKING ('L') MAY BE REQUIRED AT OUTSIDE CORNER. CONSULT CLADDING MANUFACTURER FOR DETAILS & REQUIREMENTS. THIS IS NOT REQUIRED OR SUPPLIED BY KWS.

\*16 GAUGE RAILS, FACTORY BLACK COATED RAILS & STAINLESS STEEL (304) AVAILABLE

\*MAXIMUM ALLOWABLE SPACING AND DEAD LOAD (WEIGHT OF CLADDING) IS BASED ON THE TOTAL LOAD (DEAD + LIVE) ACTING ON THE ASSEMBLY, BRACKETS AND CONNECTIONS.

17

## TYPICAL OUTSIDE CORNER

SCALE: 3" = 1'-0"

[BACK TO TABLE OF CONTENTS](#)

02/01/2016

THESE GUIDE DETAILS ARE PROVIDED FOR INFORMATION ONLY AND OUTLINE GENERAL/TYPICAL REQUIREMENTS FOR THE ATTACHMENT SYSTEM. PROJECT SPECIFIC ENGINEERING IS AVAILABLE TO ADDRESS STRUCTURAL ATTACHMENT (i.e. FASTENING PATTERN, ETC.). CONTACT KWS FOR FURTHER DETAILS. **ALL IMPLIED WARRANTIES INCLUDING MERCHANTABILITY & FITNESS FOR A PARTICULAR PURPOSE ARE EXPRESSLY EXCLUDED.**

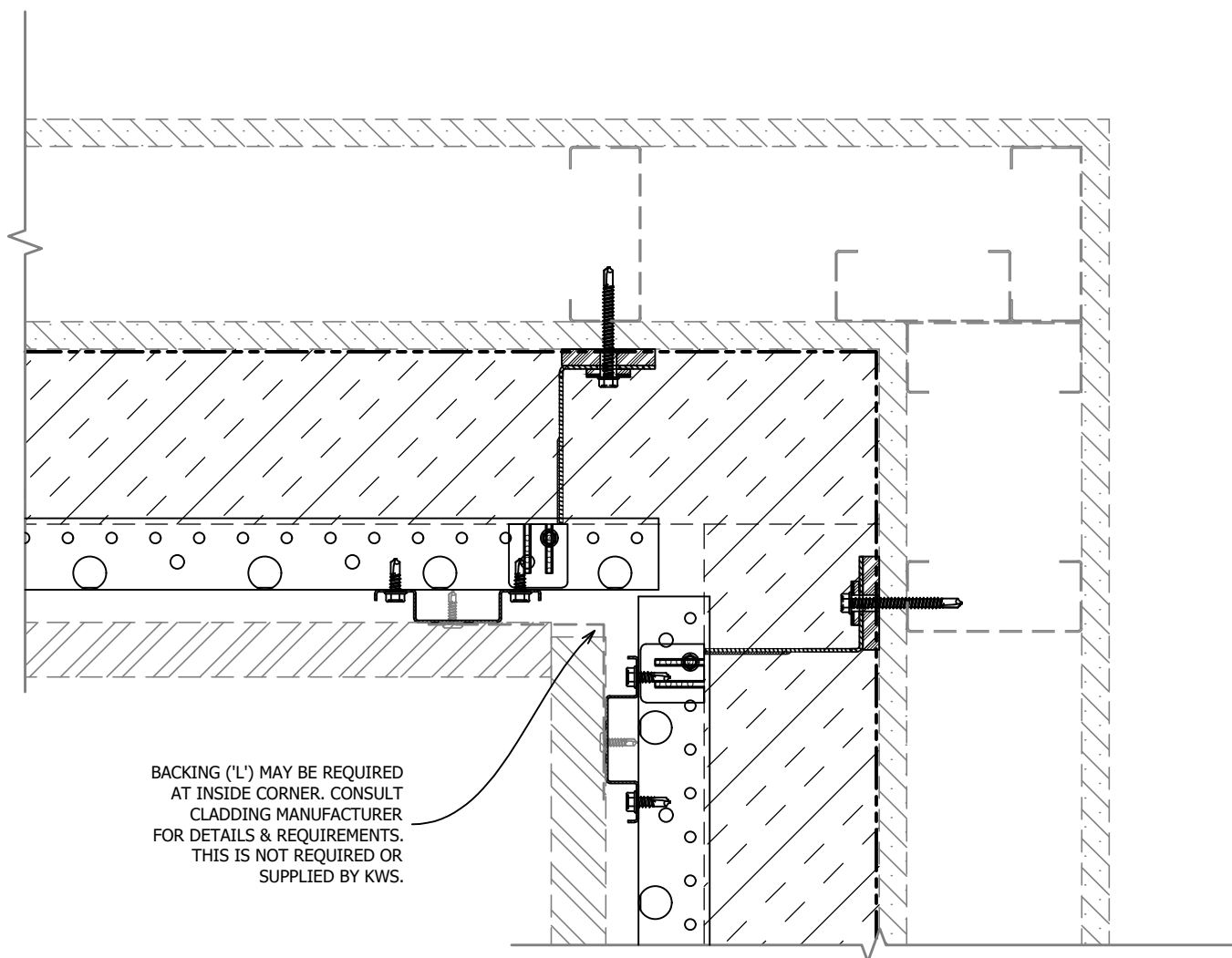
[www.knightwallsystems.com](http://www.knightwallsystems.com)

© Knight Wall Systems Deer Park, WA - 1.855.KWS.WALL  
PATENT US 8,429,866 B2, OTHERS PENDING - Drawn by: BN



## KNIGHT MFI™ System D-SERIES (HORIZONTAL ORIENTATION) RAINSCREEN ATTACHMENT

SHEET 17 of 22



\*16 GAUGE RAILS, FACTORY BLACK COATED RAILS & STAINLESS STEEL (304) AVAILABLE

\*MAXIMUM ALLOWABLE SPACING AND DEAD LOAD (WEIGHT OF CLADDING) IS BASED ON THE TOTAL LOAD (DEAD + LIVE) ACTING ON THE ASSEMBLY, BRACKETS AND CONNECTIONS.

18

## TYPICAL INSIDE CORNER

SCALE: 3" = 1'-0"

[BACK TO TABLE OF CONTENTS](#)

02/01/2016

THESE GUIDE DETAILS ARE PROVIDED FOR INFORMATION ONLY AND OUTLINE GENERAL/TYPICAL REQUIREMENTS FOR THE ATTACHMENT SYSTEM. PROJECT SPECIFIC ENGINEERING IS AVAILABLE TO ADDRESS STRUCTURAL ATTACHMENT (i.e. FASTENING PATTERN, ETC.). CONTACT KWS FOR FURTHER DETAILS. **ALL IMPLIED WARRANTIES INCLUDING MERCHANTABILITY & FITNESS FOR A PARTICULAR PURPOSE ARE EXPRESSLY EXCLUDED.**

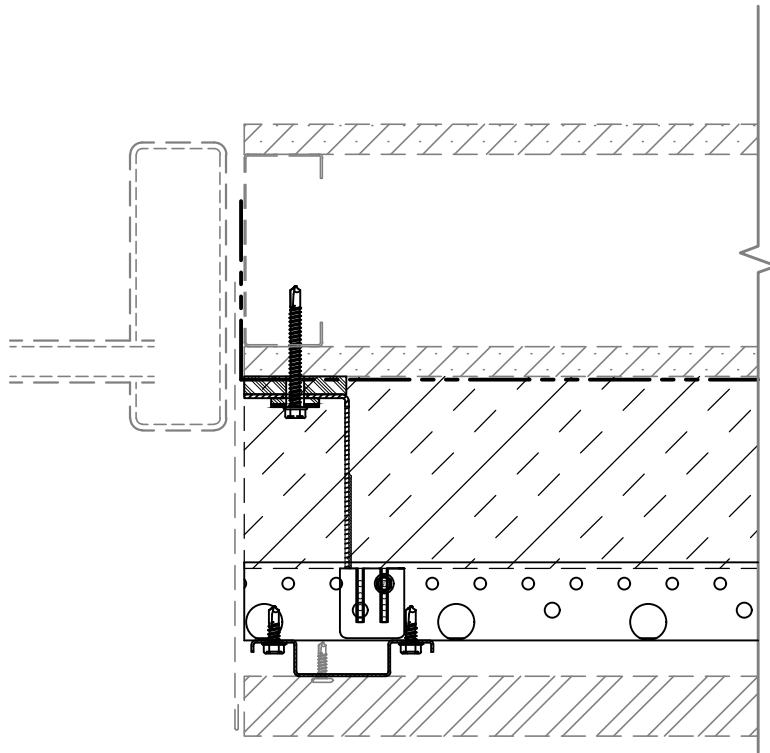
[www.knightwallsystems.com](http://www.knightwallsystems.com)

© Knight Wall Systems Deer Park, WA - 1.855.KWS.WALL  
PATENT US 8,429,866 B2, OTHERS PENDING - Drawn by: BN



## KNIGHT MFI™ System D-SERIES (HORIZONTAL ORIENTATION) RAINSCREEN ATTACHMENT

SHEET 18 of 22



\* FLASHING DETAILS VARY BASED ON WINDOW TYPE,  
POSITION (INSET VS FLUSH) AND CLADDING TYPE.  
FLASHING IS NOT BY KWS.

\*16 GAUGE RAILS, FACTORY BLACK COATED RAILS & STAINLESS STEEL  
(304) AVAILABLE

\*MAXIMUM ALLOWABLE SPACING AND DEAD LOAD (WEIGHT OF  
CLADDING) IS BASED ON THE TOTAL LOAD (DEAD + LIVE) ACTING ON THE  
ASSEMBLY, BRACKETS AND CONNECTIONS.

19

## TYPICAL JAMB CONDITION

SCALE: 3" = 1'-0"

[BACK TO TABLE OF CONTENTS](#)

02/01/2016

THESE GUIDE DETAILS ARE PROVIDED FOR INFORMATION ONLY  
AND OUTLINE GENERAL/TYPICAL REQUIREMENTS FOR THE  
ATTACHMENT SYSTEM. PROJECT SPECIFIC ENGINEERING IS  
AVAILABLE TO ADDRESS STRUCTURAL ATTACHMENT (i.e.  
FASTENING PATTERN, ETC.). CONTACT KWS FOR FURTHER  
DETAILS. **ALL IMPLIED WARRANTIES INCLUDING  
MERCHANTABILITY & FITNESS FOR A PARTICULAR  
PURPOSE ARE EXPRESSLY EXCLUDED.**

[www.knightwallsystems.com](http://www.knightwallsystems.com)

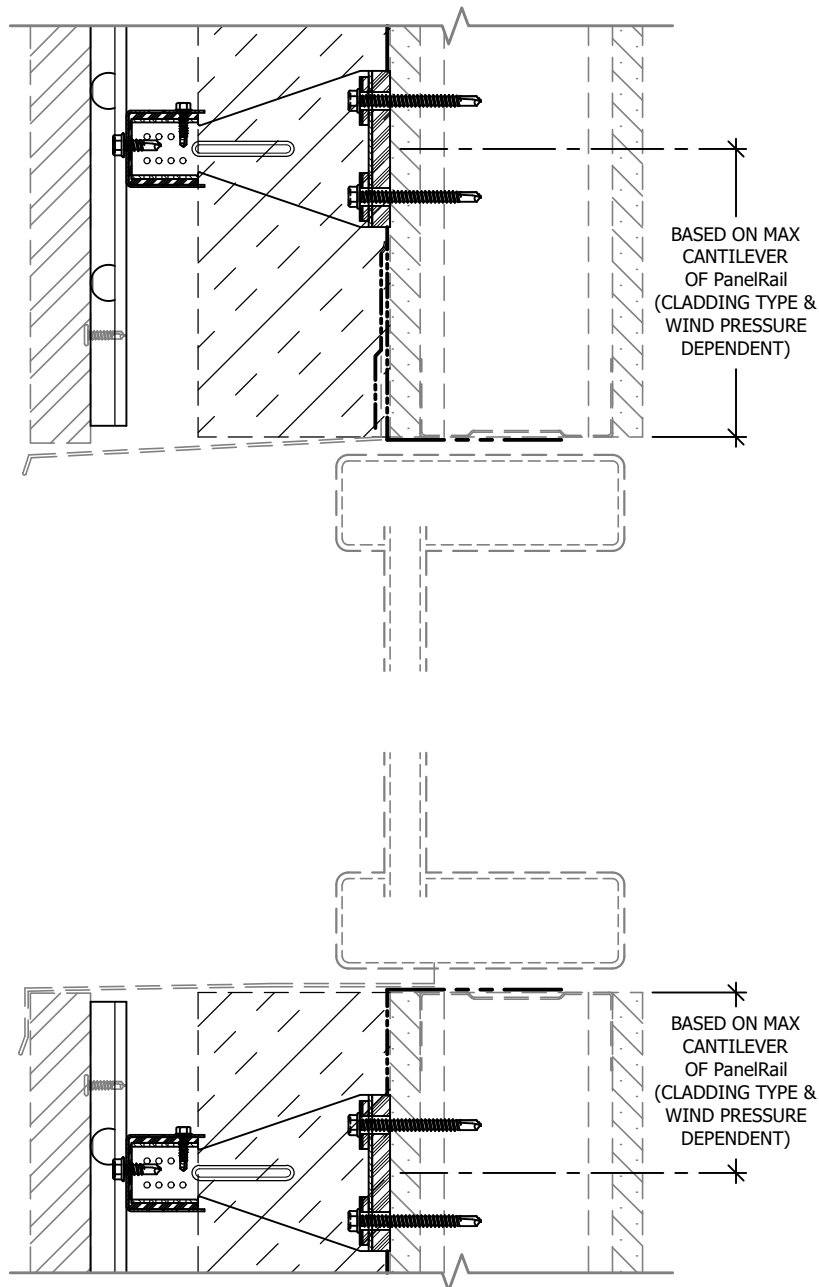
© Knight Wall Systems Deer Park, WA - 1.855.KWS.WALL

PATENT US 8,429,866 B2, OTHERS PENDING - Drawn by: BN



## KNIGHT MFI™ System D-SERIES (HORIZONTAL ORIENTATION) RAINSCREEN ATTACHMENT

SHEET 19 of 22



\* FLASHING DETAILS VARY BASED ON WINDOW TYPE, POSITION (INSET VS FLUSH) AND CLADDING TYPE. FLASHING IS NOT BY KWS.

\*16 GAUGE RAILS, FACTORY BLACK COATED RAILS & STAINLESS STEEL (304) AVAILABLE

\*MAXIMUM ALLOWABLE SPACING AND DEAD LOAD (WEIGHT OF CLADDING) IS BASED ON THE TOTAL LOAD (DEAD + LIVE) ACTING ON THE ASSEMBLY, BRACKETS AND CONNECTIONS.

20

## TYPICAL HEAD & SILL CONDITION

SCALE: 3" = 1'-0"

[BACK TO TABLE OF CONTENTS](#)

02/01/2016

THESE GUIDE DETAILS ARE PROVIDED FOR INFORMATION ONLY AND OUTLINE GENERAL/TYPICAL REQUIREMENTS FOR THE ATTACHMENT SYSTEM. PROJECT SPECIFIC ENGINEERING IS AVAILABLE TO ADDRESS STRUCTURAL ATTACHMENT (i.e. FASTENING PATTERN, ETC.). CONTACT KWS FOR FURTHER DETAILS. **ALL IMPLIED WARRANTIES INCLUDING MERCHANTABILITY & FITNESS FOR A PARTICULAR PURPOSE ARE EXPRESSLY EXCLUDED.**

[www.knightwallsystems.com](http://www.knightwallsystems.com)

© Knight Wall Systems Deer Park, WA - 1.855.KWS.WALL

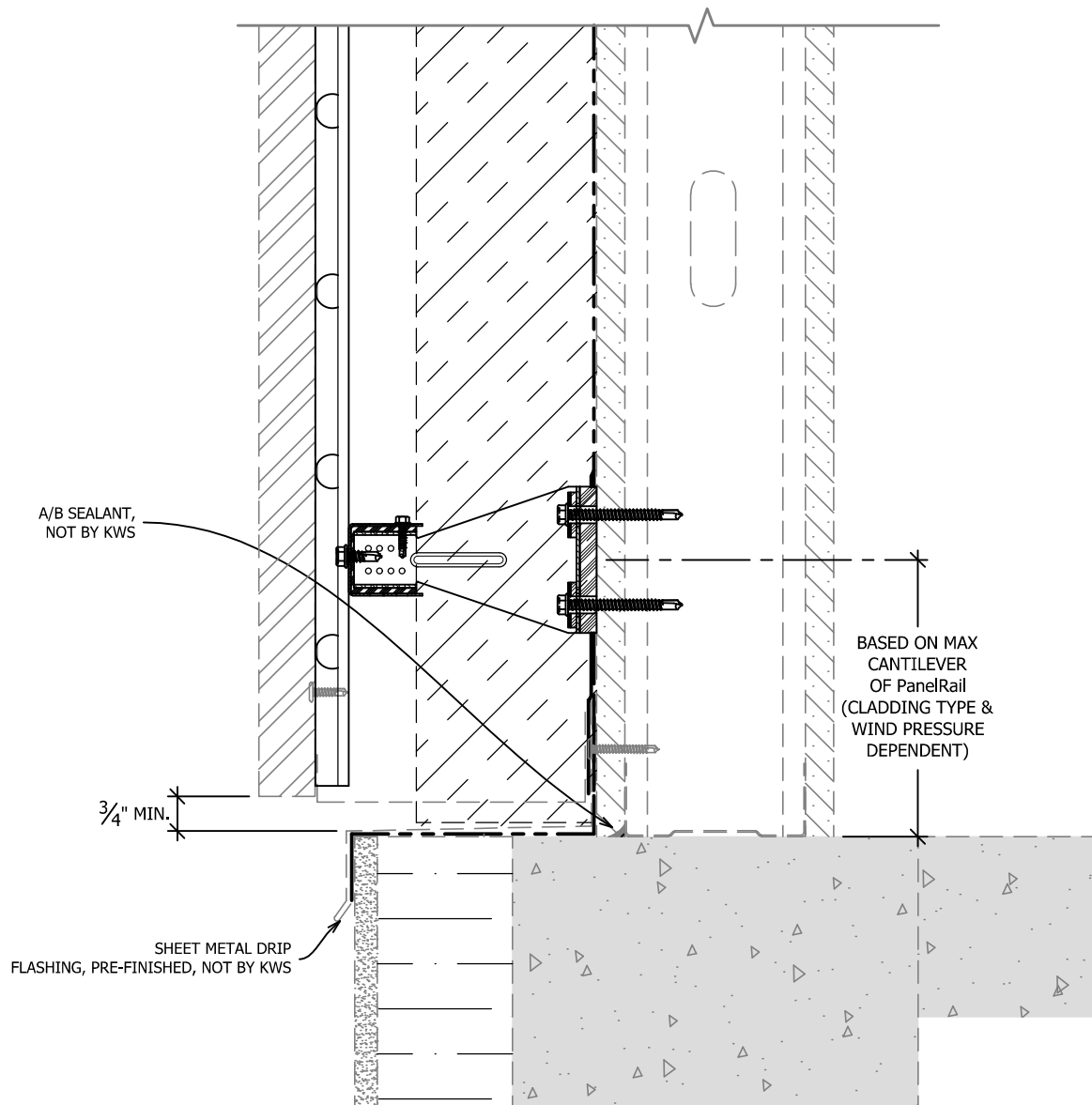
PATENT US 8,429,866 B2, OTHERS PENDING - Drawn by: BN



## KNIGHT MFI™ System D-SERIES (HORIZONTAL ORIENTATION) RAINSCREEN ATTACHMENT

SHEET 20 of 22





\* CLEAR & UNRESTRICTED VENTILATION & DRAINAGE  
REQUIRED AT BASE OF WALL

\*16 GAUGE RAILS, FACTORY BLACK COATED RAILS & STAINLESS STEEL  
(304) AVAILABLE

\*MAXIMUM ALLOWABLE SPACING AND DEAD LOAD (WEIGHT OF  
CLADDING) IS BASED ON THE TOTAL LOAD (DEAD + LIVE) ACTING ON THE  
ASSEMBLY, BRACKETS AND CONNECTIONS.

21

## TYPICAL BASE OF WALL CONDITION

SCALE: 3" = 1'-0"

[BACK TO TABLE OF CONTENTS](#)

02/01/2016

THESE GUIDE DETAILS ARE PROVIDED FOR INFORMATION ONLY  
AND OUTLINE GENERAL/TYPICAL REQUIREMENTS FOR THE  
ATTACHMENT SYSTEM. PROJECT SPECIFIC ENGINEERING IS  
AVAILABLE TO ADDRESS STRUCTURAL ATTACHMENT (i.e.  
FASTENING PATTERN, ETC.). CONTACT KWS FOR FURTHER  
DETAILS. **ALL IMPLIED WARRANTIES INCLUDING  
MERCHANTABILITY & FITNESS FOR A PARTICULAR  
PURPOSE ARE EXPRESSLY EXCLUDED.**

www.knightwallsystems.com  
© Knight Wall Systems Deer Park, WA - 1.855.KWS.WALL  
PATENT US 8,429,866 B2, OTHERS PENDING - Drawn by: BN



## KNIGHT MFI™ System D-SERIES (HORIZONTAL ORIENTATION) RAINSCREEN ATTACHMENT

SHEET 21 of 22

NOTE:  
MAXIMUM PanelRail CANTILEVER  
BEYOND A ThermoBracket-S  
VARIES PER PROJECT. TYPICALLY  
IT WILL RANGE FROM 6"-14".

HORIZONTAL D-RAIL,  
18 gauge, 50 ksi,  
ASTM A1046 ZM40  
Zn-Al-Mg COATED  
STEEL, BY KWS

2"-5" PanelRail,  
18 gauge, 50 ksi,  
ASTM A1046 ZM40  
Zn-Al-Mg ULTRA  
ANTI-CORROSION  
COATING, BY KWS

A BREAK/MOVEMENT JOINT IN  
CLADDING MUST COINCIDE WITH  
BREAK IN ATTACHMENT SYSTEM  
AND FLOOR DEFLECTION JOINTS  
TO PREVENT DAMAGE AND STRESS  
ON WALL SYSTEM, CONSULT CLADDING  
MANUFACTURER FOR DETAILS,  
NOT BY KWS

GAP BETWEEN RAILS TYPICALLY  
EQUALS 1.5x THE EXPECTED  
FLOOR MOVEMENT, MINIMUM  
OF  $\frac{3}{8}$ " AND MAXIMUM OF 1"

BRACKET MUST NOT INFRINGE ON  
STEEL STUD FLOOR DEFLECTION  
TRACK MOVEMENT

FLOOR DEFLECTION TRACK,  
BY OTHERS

\*16 GAUGE RAILS, FACTORY BLACK COATED RAILS & STAINLESS STEEL  
(304) AVAILABLE

\*MAXIMUM ALLOWABLE SPACING AND DEAD LOAD (WEIGHT OF  
CLADDING) IS BASED ON THE TOTAL LOAD (DEAD + LIVE) ACTING ON THE  
ASSEMBLY, BRACKETS AND CONNECTIONS.

22

## TYPICAL FLOOR DEFLECTION JOINT

SCALE: 3" = 1'-0"

BACK TO TABLE OF CONTENTS

02/01/2016

THESE GUIDE DETAILS ARE PROVIDED FOR INFORMATION ONLY  
AND OUTLINE GENERAL/TYPICAL REQUIREMENTS FOR THE  
ATTACHMENT SYSTEM. PROJECT SPECIFIC ENGINEERING IS  
AVAILABLE TO ADDRESS STRUCTURAL ATTACHMENT (i.e.  
FASTENING PATTERN, ETC.). CONTACT KWS FOR FURTHER  
DETAILS. **ALL IMPLIED WARRANTIES INCLUDING  
MERCHANTABILITY & FITNESS FOR A PARTICULAR  
PURPOSE ARE EXPRESSLY EXCLUDED.**

www.knightwallsystems.com  
© Knight Wall Systems Deer Park, WA - 1.855.KWS.WALL  
PATENT US 8,429,866 B2, OTHERS PENDING - Drawn by: BN



## KNIGHT MFI™ System D-SERIES (HORIZONTAL ORIENTATION) RAINSCREEN ATTACHMENT

SHEET 22 of 22