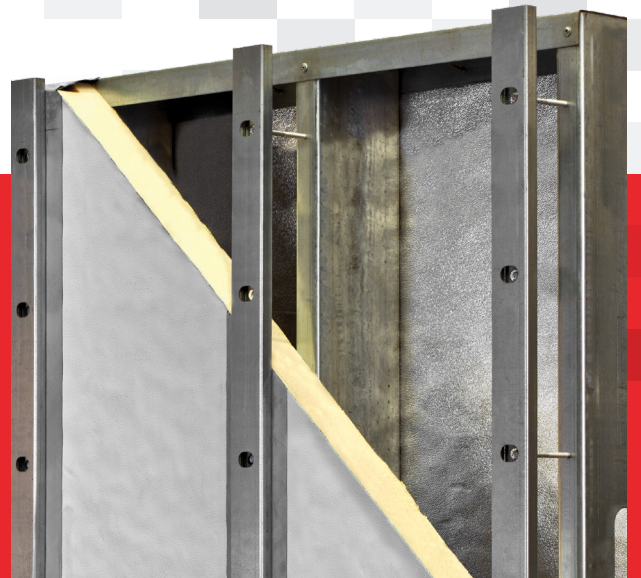




CI® System Rainscreen Attachment

Non-Combustible Continuous Insulation Girts:
No Thermal Bridges Other Than Fasteners...

FORMED TO PROTECT WHAT MATTERS MOST™



Knight Wall Systems™ CI® system provides outstanding thermal performance by way of true ci (continuous insulation), while accommodating nearly any façade or cladding system – providing maximum versatility and durability, with ease of design and installation.

The CI system uses unique ¾” deep vertical box girts – called CI-GIRT® – designed to properly disburse the façade loads over exterior rigid board insulation - with only unique thermally isolated fasteners penetrating the thermal barrier thus minimizing thermal bridging. For basic, cost-effective horizontal claddings, only a single layer of CI-GIRT may be needed. For more complex cladding designs or types, choose from a wide variety of KWS™ secondary rails for those panels requiring specific attachment points.

CI system’s components are produced in standard and custom lengths, in either 16 or 18 gauge Zn-Al-Mg coated steel (standard silver or black PVDF coated) and also available in stainless steel.

This easy to design and even easier to install, engineered drop-in system solution will provide any project with design versatility while still meeting or exceeding North American energy code requirements.

CI system attachment completes the rainscreen envelope design, whether choosing metal panels, lap siding, Aluminum Composite Material (ACM) panels, terra cotta, GFRC, or many more. And choose any brand of insulation meeting minimum compressive strength and code requirements, simplifying design specifications, including ROCKWOOL Comfortboard® 110.

THERMAL PERFORMANCE EFFICIENCY*:	
CI® SYSTEM:	98% - 95%
FIBERGLASS BRACKETS:	85% - 72%
ALUMINUM BRACKETS:	75% - 59%
HORIZONTAL Z-GIRTS:	65% - 50%
VERTICAL Z-GIRTS:	55% - 40%

*Percentage of efficiency is for illustrative purposes only will vary based upon exact wall assembly.

EXAMPLE U-VALUES		
EXTERIOR INSULATION	ASSEMBLY U-VALUE	EFFECTIVE R-VALUE
2” (R-13)	0.064	15.7
3” (R-19)	0.047	21.1

Based on a standard steel stud wall.

Please see Knight Wall Systems 3D thermal modeling report for more information and assembly specific U-factors.

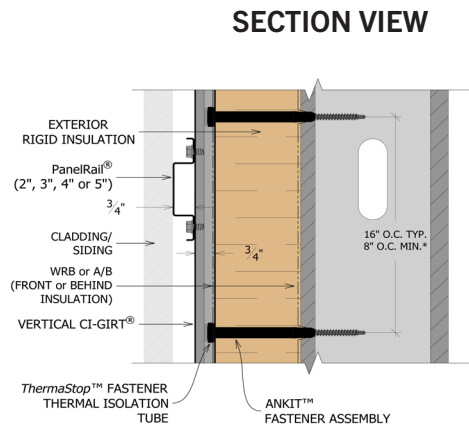


Advantages to CI® System Rainscreen Attachment

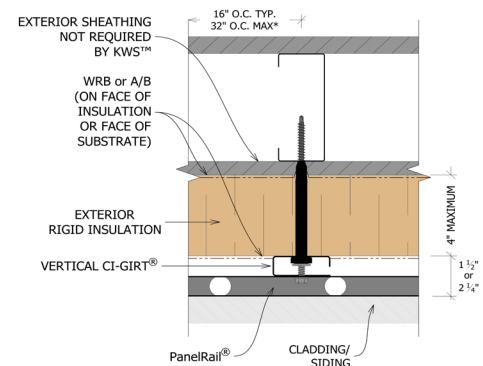
- Non-Combustible Girt and Rails
- Vertical CI-GIRT® can be spaced 16", 24" or 32" O.C.*
- Support cladding weighing up to 20 PSF*
- Real labor savings – no notching or cutting of exterior rigid board insulation required like with Z girts, brackets or clips
- Thermally isolated fasteners with specially designed *ThermaStop*™ come preassembled
- Highly corrosion resistant Zn-Al-Mg ZM40 (ASTM A1046) coated steel provides 10x the protection vs typical G90 Galvanized steel
- Black PVDF finish or stainless steel options available
- Easily installed over any type of substrate – steel studs, wood studs, CMU, concrete
- Engineering calculations provide design load compliance for each specific project
- 10-year limited labor & material warranty
- Attach nearly any type of cladding – supplied by any manufacturer – with easy and efficient detailing and installation
- Use any manufacturer's insulation meeting minimum strength and other code requirements (including ROCKWOOL Comfortboard® 110)
- Attach cladding directly to the vertical CI-GIRT® or add optional KWS horizontal rails (such as *PanelRail*®)
- Excellent ventilation with a ¾-inch minimum continuous rainscreen cavity
- Pre-engineered and 3rd party tested for proven performance, reliability and durability
- Complete, drop-in rainscreen attachment system – girts, thermally isolated fasteners, rails and engineering – one source liability for the whole system

*Maximum allowable spacing and dead load (weight of cladding) is based on the total load (dead + live) acting on the assembly and connections. Wall anchors must be specified and supplied by KWS for a written limited warranty. KWS will specify the exact anchor type, embedment depth and spacing for anchors in project specific engineering packages. *ThermaStop* thermal isolation washers must be used on all types of wall anchors with the HCl or CI system, no matter the substrate. Contact KWS for more information.

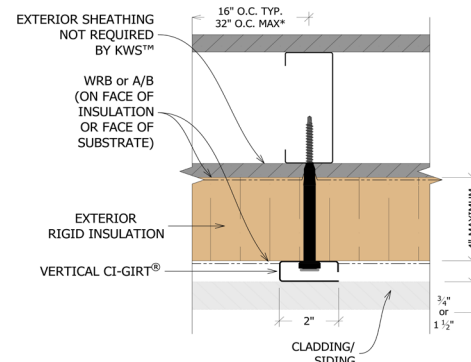
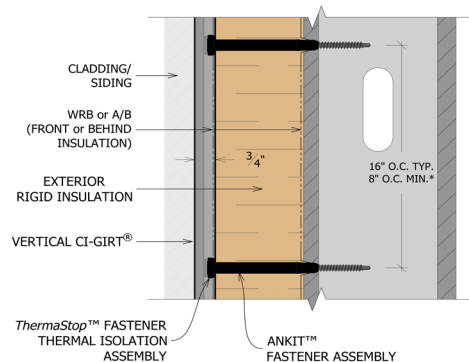
Vertical CI-Girt® + Horizontal PanelRail®



PLAN VIEW



Vertical CI-Girt® Only



NO EXPRESS WARRANTIES ARE GIVEN EXCEPT FOR ANY APPLICABLE WRITTEN WARRANTIES SPECIFICALLY PROVIDED BY KNIGHT WALL SYSTEMS. ALL IMPLIED WARRANTIES INCLUDING THOSE OF MERCHANTABILITY AND FITNESS FOR A PARTICULAR PURPOSE ARE EXPRESSLY EXCLUDED. No freedom from any patent owned by Knight Wall Systems or others is to be inferred. Because use conditions and applicable laws may differ from one location to another and may change with time, Customer is responsible for determining whether products and the information in this document are appropriate for Customer's use.

All content included on this site is and shall continue to be the property of Knight Wall Systems, Inc. or its content suppliers, and is protected under applicable copyright, trademark, and other proprietary rights. ANKIT, CI, CI-GIRT, KNIGHT WALL SYSTEMS, the Knight Wall Systems design mark, MFI, PANELRAIL, THERMABRACKET, THERMASTOP, THERMAZEE, and FORMED TO PROTECT WHAT MATTERS MOST are trademarks of Knight Wall Systems, Inc. US Patent Nos. 8429866, 8973334, 9677268, 9732518, 98526655, D963894, 11299891, 11286676, and others are registered and pending patents of Knight Wall Systems, Inc. These lists are not exhaustive and Knight Wall Systems, Inc. does not waive its rights in regard to other intellectual property not listed. © 2024 Knight Wall Systems, Inc. All rights reserved.



ALL KNIGHT WALL SYSTEMS
COMPONENTS ARE
MANUFACTURED IN THE USA.

2401 East 6th Street, Deer Park, WA 99006
www.knightwallsystems.com

1-855-597-9255 (KWS-WALL)
509-262-0104