



# 1.5" THERMAZEE®

## THERMALLY ENHANCED CLADDING SUPPORT GIRT

### APPLICATION

The ThermaZee® can be installed vertically or horizontally and facade panels can be directly attached, or indirectly attached via secondary rails. Supported weight and wind pressures will vary depending upon the spacing of the girt and the substrate to which they attach.

### SUSTAINABILITY INFORMATION

Knight Wall Systems™ steel products are all made with U.S. produced steel, 100% recyclable and have an average recycled content of 34.2% (19.8% post-consumer & 14.4% pre-consumer). A Declare label has been issued for the steel used in all KWS products as red list free.

### GEOMETRIC PROPERTIES

TOTAL DEPTH	1.50 inches
TOTAL WIDTH (HEIGHT)	3.30 inches
BACK LEG DIMENSION	1.63 inches
FRONT LEG DIMENSION	1.63 inches
WEB NET FREE AREA (OPENNESS)	61.4%

### ENGINEERING PROPERTIES

18-GA 16-GA

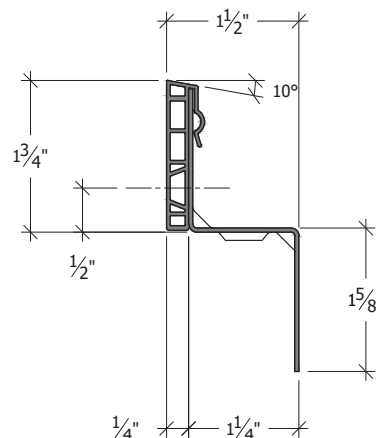
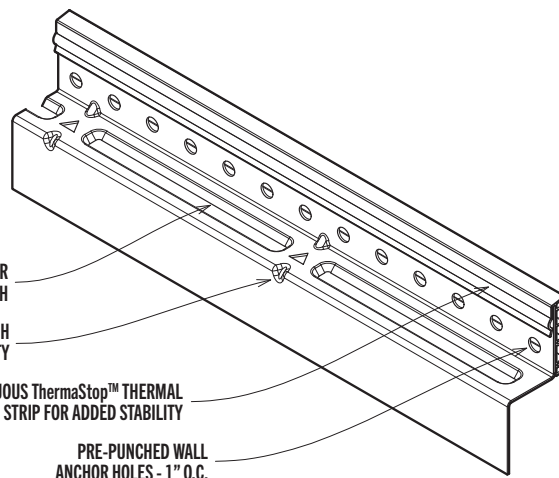
DESIGN THICKNESS	0.0484 inches	0.0579 inches
MIN. STEEL THICKNESS	0.0460 inches	0.0550 inches
MIN. YIELD STRESS, Fy	50 ksi	50 ksi
WEIGHT	0.82 lbs/ft	0.98 lbs/ft

### MATERIAL OPTIONS

AVAILABLE MATERIALS	Zn-Al-Mg Coated Steel (ASTM A1046 ZM40) or 304 Stainless Steel*
AVAILABLE GAUGES	18-GA or 16-GA
AVAILABLE FINISHES	Standard Mill or Black PVDF
AVAILABLE LENGTHS	120 inches Standard (96 inches Available)

Properties are for ZM40 steel products only, contact KWS for stainless steel.  
\*Asterisk identifies non-standard items - availability & additional cost vary.  
All dimensions & weights are nominal.

Black coated components are only coated on one side; opposite side is primed.  
Contact KWS to confirm availability - most standard items will ship within two weeks (quantity dependent).  
See system specific guide details for further information on design, detailing and installation.



NO EXPRESS WARRANTIES ARE GIVEN EXCEPT FOR ANY APPLICABLE WRITTEN WARRANTIES SPECIFICALLY PROVIDED BY KNIGHT WALL SYSTEMS. ALL IMPLIED WARRANTIES INCLUDING THOSE OF MERCHANTABILITY AND FITNESS FOR A PARTICULAR PURPOSE ARE EXPRESSLY EXCLUDED. No freedom from any patent owned by Knight Wall Systems or others is to be inferred. Because use conditions and applicable laws may differ from one location to another and may change with time, Customer is responsible for determining whether products and the information in this document are appropriate for Customer's use. They are not guaranteed in any way by the Knight Wall Systems, Inc. since building design, engineering, and construction, including workmanship and materials are beyond the control of the manufacturer. The information provided here is subject to change without notice.

All content included on this document is and shall continue to be the property of Knight Wall Systems, Inc. or its content suppliers, and is protected under applicable copyright, trademark, and other proprietary rights. KNIGHT WALL SYSTEMS, the Knight Wall Systems design mark, MFI, THERMABRACKET, THERMASTOP, and FORMED TO PROTECT WHAT MATTERS MOST are trademarks of Knight Wall Systems, Inc. US Patent Nos. 8429866, 8973334, 9677268, 9732518, 98526655, D963894, 11299891, 11286676, and others are registered and pending patents of Knight Wall Systems, Inc. These lists are not exhaustive and Knight Wall Systems, Inc. does not waive its rights in regard to other intellectual property not listed.

© 2025 Knight Wall Systems, Inc. All rights reserved. 042325



# 2.0" THERMAZEE® THERMALLY ENHANCED CLADDING SUPPORT GIRT

## APPLICATION

The ThermaZee® can be installed vertically or horizontally and facade panels can be directly attached, or indirectly attached via secondary rails. Supported weight and wind pressures will vary depending upon the spacing of the girt and the substrate to which they attach.

## SUSTAINABILITY INFORMATION

Knight Wall Systems™ steel products are all made with U.S. produced steel, 100% recyclable and have an average recycled content of 34.2% (19.8% post-consumer & 14.4% pre-consumer). A Declare label has been issued for the steel used in all KWS products as red list free.

## GEOMETRIC PROPERTIES

TOTAL DEPTH	2.00 inches
TOTAL WIDTH (HEIGHT)	3.30 inches
BACK LEG DIMENSION	1.63 inches
FRONT LEG DIMENSION	1.63 inches
WEB NET FREE AREA (OPENNESS)	41.7%

## ENGINEERING PROPERTIES

18-GA 16-GA

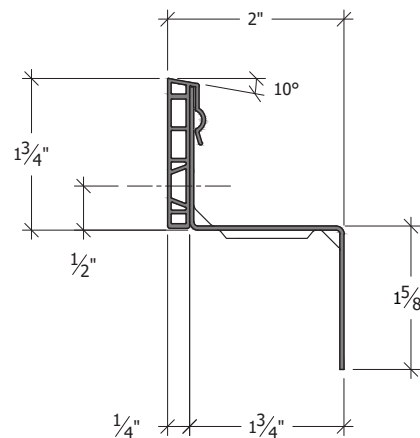
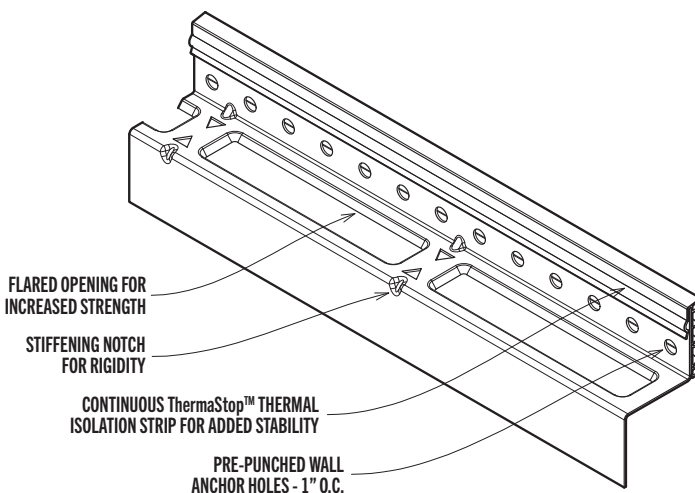
DESIGN THICKNESS	0.0484 inches	0.0579 inches
MIN. STEEL THICKNESS	0.0460 inches	0.0550 inches
MIN. YIELD STRESS, Fy	50 ksi	50 ksi
WEIGHT	0.84 lbs/ft	1.00 lbs/ft

## MATERIAL OPTIONS

AVAILABLE MATERIALS	Zn-Al-Mg Coated Steel (ASTM A1046 ZM40) or 304 Stainless Steel*
AVAILABLE GAUGES	18-GA or 16-GA
AVAILABLE FINISHES	Standard Mill or Black PVDF
AVAILABLE LENGTHS	120 inches Standard (96 inches Available)

Properties are for ZM40 steel products only, contact KWS for stainless steel.  
\*Asterisk identifies non-standard items - availability & additional cost vary.  
All dimensions & weights are nominal.

Black coated components are only coated on one side; opposite side is primed.  
Contact KWS to confirm availability - most standard items will ship within two weeks (quantity dependent).  
See system specific guide details for further information on design, detailing and installation.



NO EXPRESS WARRANTIES ARE GIVEN EXCEPT FOR ANY APPLICABLE WRITTEN WARRANTIES SPECIFICALLY PROVIDED BY KNIGHT WALL SYSTEMS. ALL IMPLIED WARRANTIES INCLUDING THOSE OF MERCHANTABILITY AND FITNESS FOR A PARTICULAR PURPOSE ARE EXPRESSLY EXCLUDED. No freedom from any patent owned by Knight Wall Systems or others is to be inferred. Because use conditions and applicable laws may differ from one location to another and may change with time, Customer is responsible for determining whether products and the information in this document are appropriate for Customer's use. They are not guaranteed in any way by the Knight Wall Systems, Inc. since building design, engineering, and construction, including workmanship and materials are beyond the control of the manufacturer. The information provided here is subject to change without notice.

All content included on this document is and shall continue to be the property of Knight Wall Systems, Inc. or its content suppliers, and is protected under applicable copyright, trademark, and other proprietary rights. KNIGHT WALL SYSTEMS, the Knight Wall Systems design mark, MFI, THERMABRACKET, THERMASTOP, and FORMED TO PROTECT WHAT MATTERS MOST are trademarks of Knight Wall Systems, Inc. US Patent Nos. 8429866, 8973334, 9677268, 9732518, 98526655, D963894, 11299891, 11286676, and others are registered and pending patents of Knight Wall Systems, Inc. These lists are not exhaustive and Knight Wall Systems, Inc. does not waive its rights in regard to other intellectual property not listed.

© 2025 Knight Wall Systems, Inc. All rights reserved. 042325



# 2.5" THERMAZEE® THERMALLY ENHANCED CLADDING SUPPORT GIRT

## APPLICATION

The ThermaZee® can be installed vertically or horizontally and facade panels can be directly attached, or indirectly attached via secondary rails. Supported weight and wind pressures will vary depending upon the spacing of the girt and the substrate to which they attach.

## SUSTAINABILITY INFORMATION

Knight Wall Systems™ steel products are all made with U.S. produced steel, 100% recyclable and have an average recycled content of 34.2% (19.8% post-consumer & 14.4% pre-consumer). A Declare label has been issued for the steel used in all KWS products as red list free.

## GEOMETRIC PROPERTIES

TOTAL DEPTH	2.50 inches
TOTAL WIDTH (HEIGHT)	3.30 inches
BACK LEG DIMENSION	1.63 inches
FRONT LEG DIMENSION	1.63 inches
WEB NET FREE AREA (OPENNESS)	32.4%

## ENGINEERING PROPERTIES

18-GA

16-GA

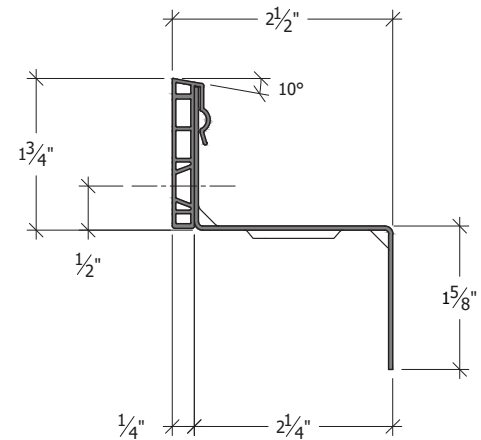
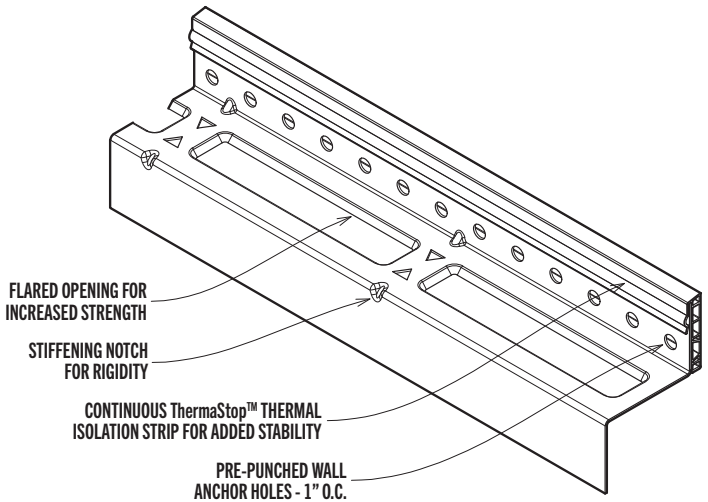
DESIGN THICKNESS	0.0484 inches	0.0579 inches
MIN. STEEL THICKNESS	0.0460 inches	0.0550 inches
MIN. YIELD STRESS, Fy	50 ksi	50 ksi
WEIGHT	0.92 lbs/ft	1.10 lbs/ft

## MATERIAL OPTIONS

AVAILABLE MATERIALS	Zn-Al-Mg Coated Steel (ASTM A1046 ZM40) or 304 Stainless Steel*
AVAILABLE GAUGES	18-GA or 16-GA
AVAILABLE FINISHES	Standard Mill or Black PVDF
AVAILABLE LENGTHS	120 inches Standard (96 inches Available)

Properties are for ZM40 steel products only, contact KWS for stainless steel.  
\*Asterisk identifies non-standard items - availability & additional cost vary.  
All dimensions & weights are nominal.

Black coated components are only coated on one side; opposite side is primed.  
Contact KWS to confirm availability - most standard items will ship within two weeks (quantity dependent).  
See system specific guide details for further information on design, detailing and installation.



NO EXPRESS WARRANTIES ARE GIVEN EXCEPT FOR ANY APPLICABLE WRITTEN WARRANTIES SPECIFICALLY PROVIDED BY KNIGHT WALL SYSTEMS. ALL IMPLIED WARRANTIES INCLUDING THOSE OF MERCHANTABILITY AND FITNESS FOR A PARTICULAR PURPOSE ARE EXPRESSLY EXCLUDED. No freedom from any patent owned by Knight Wall Systems or others is to be inferred. Because use conditions and applicable laws may differ from one location to another and may change with time, Customer is responsible for determining whether products and the information in this document are appropriate for Customer's use. They are not guaranteed in any way by the Knight Wall Systems, Inc. since building design, engineering, and construction, including workmanship and materials are beyond the control of the manufacturer. The information provided here is subject to change without notice.

All content included on this document is and shall continue to be the property of Knight Wall Systems, Inc. or its content suppliers, and is protected under applicable copyright, trademark, and other proprietary rights. KNIGHT WALL SYSTEMS, the Knight Wall Systems design mark, MFI, THERMABRACKET, THERMASTOP, and FORMED TO PROTECT WHAT MATTERS MOST are trademarks of Knight Wall Systems, Inc. US Patent Nos. 8429866, 8973334, 9677268, 9732518, 98526655, D963894, 11299891, 11286676, and others are registered and pending patents of Knight Wall Systems, Inc. These lists are not exhaustive and Knight Wall Systems, Inc. does not waive its rights in regard to other intellectual property not listed.

© 2025 Knight Wall Systems, Inc. All rights reserved. 042325



# 3.0" THERMAZEE® THERMALLY ENHANCED CLADDING SUPPORT GIRT

## APPLICATION

The ThermaZee® can be installed vertically or horizontally and facade panels can be directly attached, or indirectly attached via secondary rails. Supported weight and wind pressures will vary depending upon the spacing of the girt and the substrate to which they attach.

## SUSTAINABILITY INFORMATION

Knight Wall Systems™ steel products are all made with U.S. produced steel, 100% recyclable and have an average recycled content of 34.2% (19.8% post-consumer & 14.4% pre-consumer). A Declare label has been issued for the steel used in all KWS products as red list free.

## GEOMETRIC PROPERTIES

TOTAL DEPTH	3.00 inches
TOTAL WIDTH (HEIGHT)	3.30 inches
BACK LEG DIMENSION	1.63 inches
FRONT LEG DIMENSION	1.63 inches
WEB NET FREE AREA (OPENNESS)	53.2%

## ENGINEERING PROPERTIES

18-GA 16-GA

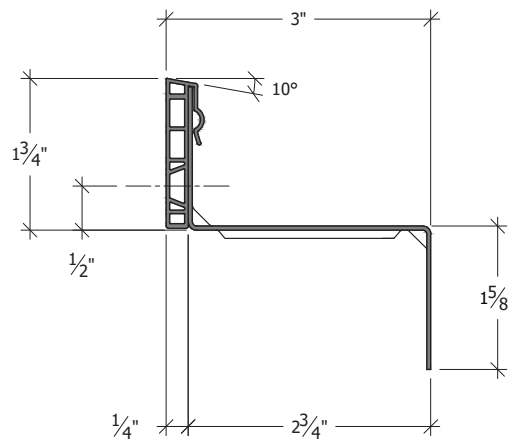
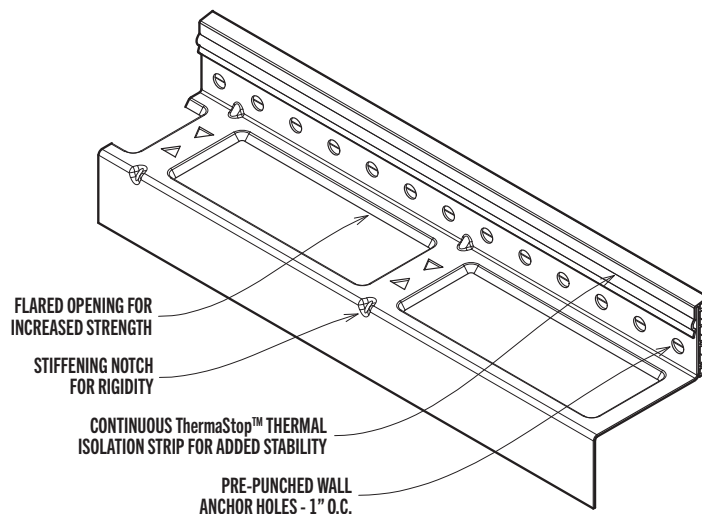
DESIGN THICKNESS	0.0484 inches	0.0579 inches
MIN. STEEL THICKNESS	0.0460 inches	0.0550 inches
MIN. YIELD STRESS, Fy	50 ksi	50 ksi
WEIGHT	0.87 lbs/ft	1.04 lbs/ft

## MATERIAL OPTIONS

AVAILABLE MATERIALS	Zn-Al-Mg Coated Steel (ASTM A1046 ZM40) or 304 Stainless Steel*
AVAILABLE GAUGES	18-GA or 16-GA
AVAILABLE FINISHES	Standard Mill or Black PVDF
AVAILABLE LENGTHS	120 inches Standard (96 inches Available)

Properties are for ZM40 steel products only, contact KWS for stainless steel.  
\*Asterisk identifies non-standard items - availability & additional cost vary.  
All dimensions & weights are nominal.

Black coated components are only coated on one side; opposite side is primed.  
Contact KWS to confirm availability - most standard items will ship within two weeks (quantity dependent).  
See system specific guide details for further information on design, detailing and installation.



NO EXPRESS WARRANTIES ARE GIVEN EXCEPT FOR ANY APPLICABLE WRITTEN WARRANTIES SPECIFICALLY PROVIDED BY KNIGHT WALL SYSTEMS. ALL IMPLIED WARRANTIES INCLUDING THOSE OF MERCHANTABILITY AND FITNESS FOR A PARTICULAR PURPOSE ARE EXPRESSLY EXCLUDED. No freedom from any patent owned by Knight Wall Systems or others is to be inferred. Because use conditions and applicable laws may differ from one location to another and may change with time, Customer is responsible for determining whether products and the information in this document are appropriate for Customer's use. They are not guaranteed in any way by the Knight Wall Systems, Inc. since building design, engineering, and construction, including workmanship and materials are beyond the control of the manufacturer. The information provided here is subject to change without notice.

All content included on this document is and shall continue to be the property of Knight Wall Systems, Inc. or its content suppliers, and is protected under applicable copyright, trademark, and other proprietary rights. KNIGHT WALL SYSTEMS, the Knight Wall Systems design mark, MFI, THERMABRACKET, THERMASTOP, and FORMED TO PROTECT WHAT MATTERS MOST are trademarks of Knight Wall Systems, Inc. US Patent Nos. 8429866, 8973334, 9677268, 9732518, 98526655, D963894, 11299891, 11286676, and others are registered and pending patents of Knight Wall Systems, Inc. These lists are not exhaustive and Knight Wall Systems, Inc. does not waive its rights in regard to other intellectual property not listed.

© 2025 Knight Wall Systems, Inc. All rights reserved. 042325



# 3.5" THERMAZEE® THERMALLY ENHANCED CLADDING SUPPORT GIRT

## APPLICATION

The ThermaZee® can be installed vertically or horizontally and facade panels can be directly attached, or indirectly attached via secondary rails. Supported weight and wind pressures will vary depending upon the spacing of the girt and the substrate to which they attach.

## SUSTAINABILITY INFORMATION

Knight Wall Systems™ steel products are all made with U.S. produced steel, 100% recyclable and have an average recycled content of 34.2% (19.8% post-consumer & 14.4% pre-consumer). A Declare label has been issued for the steel used in all KWS products as red list free.

## GEOMETRIC PROPERTIES

TOTAL DEPTH	3.50 inches
TOTAL WIDTH (HEIGHT)	3.30 inches
BACK LEG DIMENSION	1.63 inches
FRONT LEG DIMENSION	1.63 inches
WEB NET FREE AREA (OPENNESS)	45.0%

## ENGINEERING PROPERTIES

18-GA

16-GA

DESIGN THICKNESS	0.0484 inches	0.0579 inches
MIN. STEEL THICKNESS	0.0460 inches	0.0550 inches
MIN. YIELD STRESS, Fy	50 ksi	50 ksi
WEIGHT	0.95 lbs/ft	1.14 lbs/ft

## MATERIAL OPTIONS

AVAILABLE MATERIALS	Zn-Al-Mg Coated Steel (ASTM A1046 ZM40) or 304 Stainless Steel*
AVAILABLE GAUGES	18-GA or 16-GA
AVAILABLE FINISHES	Standard Mill or Black PVDF
AVAILABLE LENGTHS	120 inches Standard (96 inches Available)

Properties are for ZM40 steel products only, contact KWS for stainless steel.

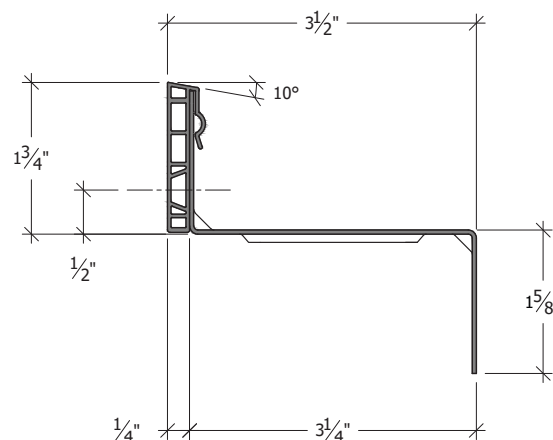
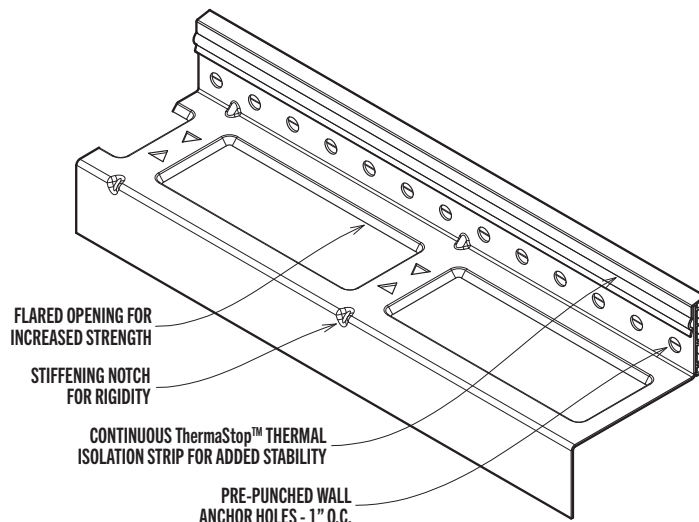
\*Asterisk identifies non-standard items - availability & additional cost vary.

All dimensions & weights are nominal.

Black coated components are only coated on one side; opposite side is primed.

Contact KWS to confirm availability - most standard items will ship within two weeks (quantity dependent).

See system specific guide details for further information on design, detailing and installation.



NO EXPRESS WARRANTIES ARE GIVEN EXCEPT FOR ANY APPLICABLE WRITTEN WARRANTIES SPECIFICALLY PROVIDED BY KNIGHT WALL SYSTEMS. ALL IMPLIED WARRANTIES INCLUDING THOSE OF MERCHANTABILITY AND FITNESS FOR A PARTICULAR PURPOSE ARE EXPRESSLY EXCLUDED. No freedom from any patent owned by Knight Wall Systems or others is to be inferred. Because use conditions and applicable laws may differ from one location to another and may change with time, Customer is responsible for determining whether products and the information in this document are appropriate for Customer's use. They are not guaranteed in any way by the Knight Wall Systems, Inc. since building design, engineering, and construction, including workmanship and materials are beyond the control of the manufacturer. The information provided here is subject to change without notice.

All content included on this document is and shall continue to be the property of Knight Wall Systems, Inc. or its content suppliers, and is protected under applicable copyright, trademark, and other proprietary rights. KNIGHT WALL SYSTEMS, the Knight Wall Systems design mark, MFI, THERMABRACKET, THERMASTOP, and FORMED TO PROTECT WHAT MATTERS MOST are trademarks of Knight Wall Systems, Inc. US Patent Nos. 8429866, 8973334, 9677268, 9732518, 98526655, D963894, 11299891, 11286676, and others are registered and pending patents of Knight Wall Systems, Inc. These lists are not exhaustive and Knight Wall Systems, Inc. does not waive its rights in regard to other intellectual property not listed.

© 2025 Knight Wall Systems, Inc. All rights reserved. 042325





# 4.0" THERMAZEE®

## THERMALLY ENHANCED CLADDING SUPPORT GIRT

### APPLICATION

The ThermaZee® can be installed vertically or horizontally and facade panels can be directly attached, or indirectly attached via secondary rails. Supported weight and wind pressures will vary depending upon the spacing of the girt and the substrate to which they attach.

### SUSTAINABILITY INFORMATION

Knight Wall Systems™ steel products are all made with U.S. produced steel, 100% recyclable and have an average recycled content of 34.2% (19.8% post-consumer & 14.4% pre-consumer). A Declare label has been issued for the steel used in all KWS products as red list free.

### GEOMETRIC PROPERTIES

TOTAL DEPTH	4.00 inches
TOTAL WIDTH (HEIGHT)	3.30 inches
BACK LEG DIMENSION	1.63 inches
FRONT LEG DIMENSION	1.63 inches
WEB NET FREE AREA (OPENNESS)	63.4%

### ENGINEERING PROPERTIES

18-GA 16-GA

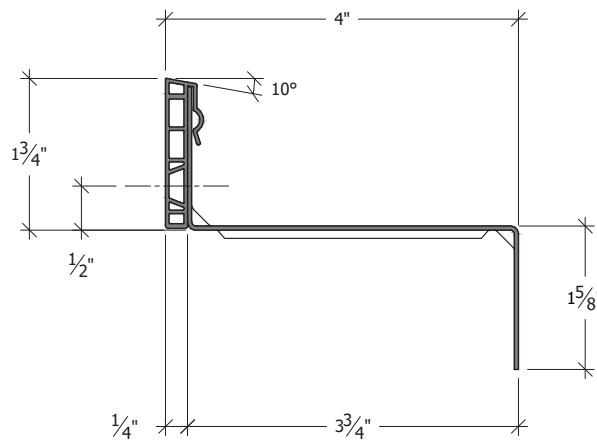
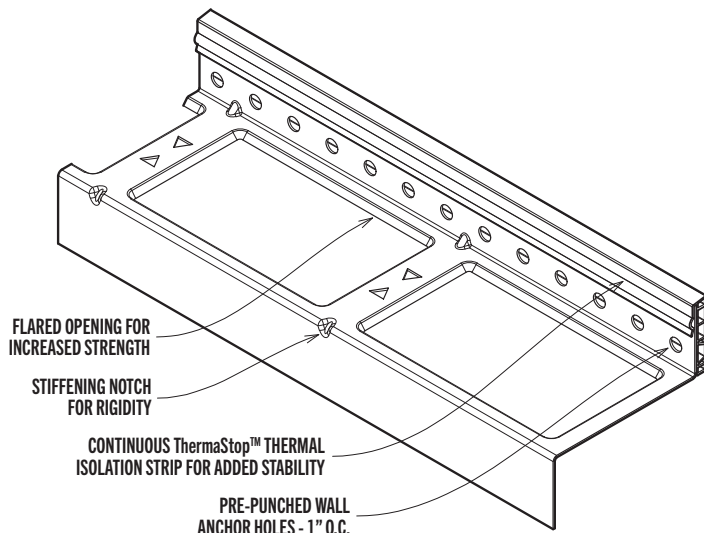
DESIGN THICKNESS	0.0484 inches	0.0579 inches
MIN. STEEL THICKNESS	0.0460 inches	0.0550 inches
MIN. YIELD STRESS, Fy	50 ksi	50 ksi
WEIGHT	0.89 lbs/ft	1.06 lbs/ft

### MATERIAL OPTIONS

AVAILABLE MATERIALS	Zn-Al-Mg Coated Steel (ASTM A1046 ZM40) or 304 Stainless Steel*
AVAILABLE GAUGES	18-GA or 16-GA
AVAILABLE FINISHES	Standard Mill or Black PVDF
AVAILABLE LENGTHS	120 inches Standard (96 inches Available)

Properties are for ZM40 steel products only, contact KWS for stainless steel.  
\*Asterisk identifies non-standard items - availability & additional cost vary.  
All dimensions & weights are nominal.

Black coated components are only coated on one side; opposite side is primed.  
Contact KWS to confirm availability - most standard items will ship within two weeks (quantity dependent).  
See system specific guide details for further information on design, detailing and installation.



NO EXPRESS WARRANTIES ARE GIVEN EXCEPT FOR ANY APPLICABLE WRITTEN WARRANTIES SPECIFICALLY PROVIDED BY KNIGHT WALL SYSTEMS. ALL IMPLIED WARRANTIES INCLUDING THOSE OF MERCHANTABILITY AND FITNESS FOR A PARTICULAR PURPOSE ARE EXPRESSLY EXCLUDED. No freedom from any patent owned by Knight Wall Systems or others is to be inferred. Because use conditions and applicable laws may differ from one location to another and may change with time, Customer is responsible for determining whether products and the information in this document are appropriate for Customer's use. They are not guaranteed in any way by the Knight Wall Systems, Inc. since building design, engineering, and construction, including workmanship and materials are beyond the control of the manufacturer. The information provided here is subject to change without notice.

All content included on this document is and shall continue to be the property of Knight Wall Systems, Inc. or its content suppliers, and is protected under applicable copyright, trademark, and other proprietary rights. KNIGHT WALL SYSTEMS, the Knight Wall Systems design mark, MFI, THERMABRACKET, THERMASTOP, and FORMED TO PROTECT WHAT MATTERS MOST are trademarks of Knight Wall Systems, Inc. US Patent Nos. 8429866, 8973334, 9677268, 9732518, 98526655, D963894, 11299891, 11286676, and others are registered and pending patents of Knight Wall Systems, Inc. These lists are not exhaustive and Knight Wall Systems, Inc. does not waive its rights in regard to other intellectual property not listed.

© 2025 Knight Wall Systems, Inc. All rights reserved. 042325



# 4.5" THERMAZEE®

## THERMALLY ENHANCED CLADDING SUPPORT GIRT

### APPLICATION

The ThermaZee® can be installed vertically or horizontally and facade panels can be directly attached, or indirectly attached via secondary rails. Supported weight and wind pressures will vary depending upon the spacing of the girt and the substrate to which they attach.

### SUSTAINABILITY INFORMATION

Knight Wall Systems™ steel products are all made with U.S. produced steel, 100% recyclable and have an average recycled content of 34.2% (19.8% post-consumer & 14.4% pre-consumer). A Declare label has been issued for the steel used in all KWS products as red list free.

### GEOMETRIC PROPERTIES

TOTAL DEPTH	4.50 inches
TOTAL WIDTH (HEIGHT)	3.30 inches
BACK LEG DIMENSION	1.63 inches
FRONT LEG DIMENSION	1.63 inches
WEB NET FREE AREA (OPENNESS)	56.0%

### ENGINEERING PROPERTIES

18-GA 16-GA

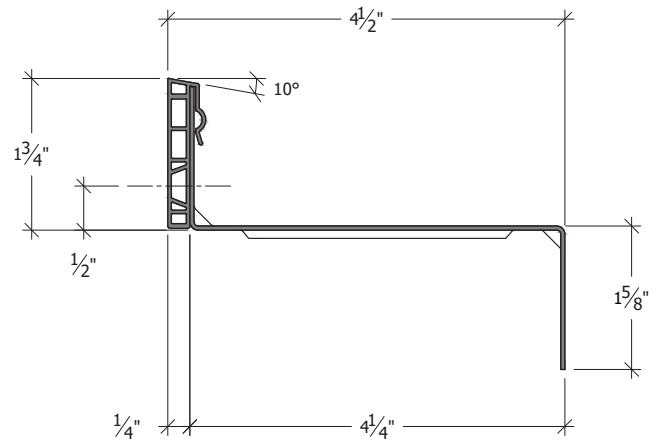
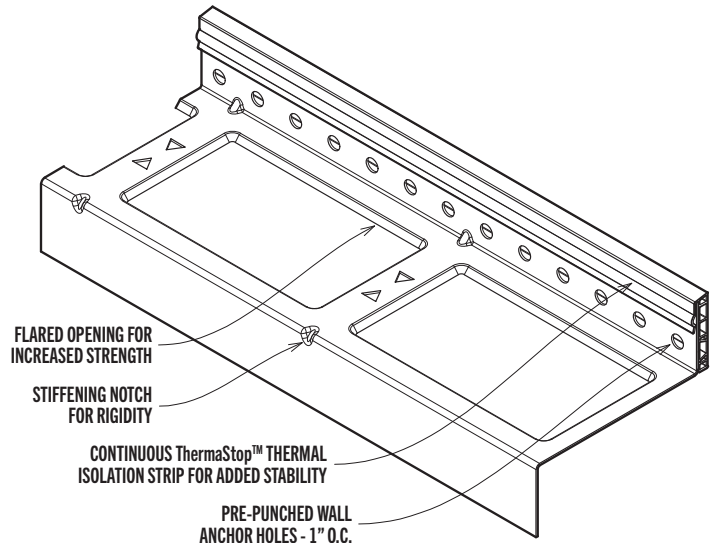
DESIGN THICKNESS	0.0484 inches	0.0579 inches
MIN. STEEL THICKNESS	0.0460 inches	0.0550 inches
MIN. YIELD STRESS, Fy	50 ksi	50 ksi
WEIGHT	0.97 lbs/ft	1.16 lbs/ft

### MATERIAL OPTIONS

AVAILABLE MATERIALS	Zn-Al-Mg Coated Steel (ASTM A1046 ZM40) or 304 Stainless Steel*
AVAILABLE GAUGES	18-GA or 16-GA
AVAILABLE FINISHES	Standard Mill or Black PVDF
AVAILABLE LENGTHS	120 inches Standard (96 inches Available)

Properties are for ZM40 steel products only, contact KWS for stainless steel.  
\*Asterisk identifies non-standard items - availability & additional cost vary.  
All dimensions & weights are nominal.

Black coated components are only coated on one side; opposite side is primed.  
Contact KWS to confirm availability - most standard items will ship within two weeks (quantity dependent).  
See system specific guide details for further information on design, detailing and installation.



NO EXPRESS WARRANTIES ARE GIVEN EXCEPT FOR ANY APPLICABLE WRITTEN WARRANTIES SPECIFICALLY PROVIDED BY KNIGHT WALL SYSTEMS. ALL IMPLIED WARRANTIES INCLUDING THOSE OF MERCHANTABILITY AND FITNESS FOR A PARTICULAR PURPOSE ARE EXPRESSLY EXCLUDED. No freedom from any patent owned by Knight Wall Systems or others is to be inferred. Because use conditions and applicable laws may differ from one location to another and may change with time, Customer is responsible for determining whether products and the information in this document are appropriate for Customer's use. They are not guaranteed in any way by the Knight Wall Systems, Inc. since building design, engineering, and construction, including workmanship and materials are beyond the control of the manufacturer. The information provided here is subject to change without notice.

All content included on this document is and shall continue to be the property of Knight Wall Systems, Inc. or its content suppliers, and is protected under applicable copyright, trademark, and other proprietary rights. KNIGHT WALL SYSTEMS, the Knight Wall Systems design mark, MFI, THERMABRACKET, THERMASTOP, and FORMED TO PROTECT WHAT MATTERS MOST are trademarks of Knight Wall Systems, Inc. US Patent Nos. 8429866, 8973334, 9677268, 9732518, 98526655, D963894, 11299891, 11286676, and others are registered and pending patents of Knight Wall Systems, Inc. These lists are not exhaustive and Knight Wall Systems, Inc. does not waive its rights in regard to other intellectual property not listed.

© 2025 Knight Wall Systems, Inc. All rights reserved. 042325



# 5.0" THERMAZEE®

## THERMALLY ENHANCED CLADDING SUPPORT GIRT

### APPLICATION

The ThermaZee® can be installed vertically or horizontally and facade panels can be directly attached, or indirectly attached via secondary rails. Supported weight and wind pressures will vary depending upon the spacing of the girt and the substrate to which they attach.

### SUSTAINABILITY INFORMATION

Knight Wall Systems™ steel products are all made with U.S. produced steel, 100% recyclable and have an average recycled content of 34.2% (19.8% post-consumer & 14.4% pre-consumer). A Declare label has been issued for the steel used in all KWS products as red list free.

### GEOMETRIC PROPERTIES

TOTAL DEPTH	5.00 inches
TOTAL WIDTH (HEIGHT)	3.30 inches
BACK LEG DIMENSION	1.63 inches
FRONT LEG DIMENSION	1.63 inches
WEB NET FREE AREA (OPENNESS)	66.1%

### ENGINEERING PROPERTIES

18-GA 16-GA

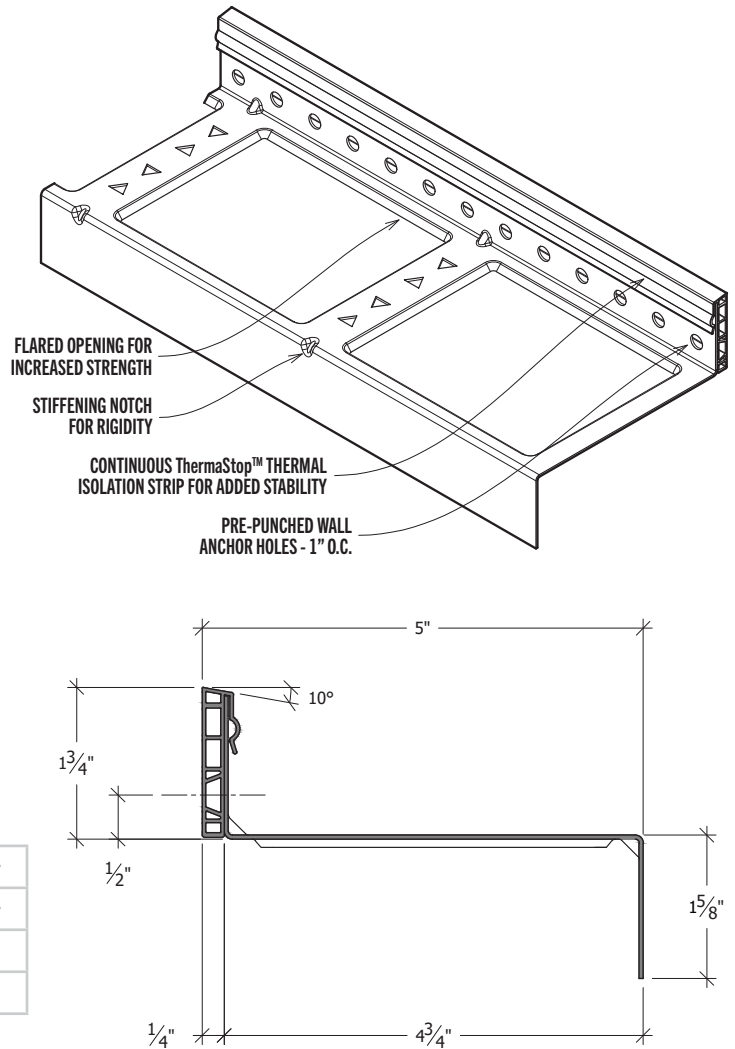
DESIGN THICKNESS	0.0484 inches	0.0579 inches
MIN. STEEL THICKNESS	0.0460 inches	0.0550 inches
MIN. YIELD STRESS, Fy	50 ksi	50 ksi
WEIGHT	0.91 lbs/ft	1.08 lbs/ft

### MATERIAL OPTIONS

AVAILABLE MATERIALS	Zn-Al-Mg Coated Steel (ASTM A1046 ZM40) or 304 Stainless Steel*
AVAILABLE GAUGES	18-GA or 16-GA
AVAILABLE FINISHES	Standard Mill or Black PVDF
AVAILABLE LENGTHS	120 inches Standard (96 inches Available)

Properties are for ZM40 steel products only, contact KWS for stainless steel.  
\*Asterisk identifies non-standard items - availability & additional cost vary.  
All dimensions & weights are nominal.

Black coated components are only coated on one side; opposite side is primed.  
Contact KWS to confirm availability - most standard items will ship within two weeks (quantity dependent).  
See system specific guide details for further information on design, detailing and installation.



NO EXPRESS WARRANTIES ARE GIVEN EXCEPT FOR ANY APPLICABLE WRITTEN WARRANTIES SPECIFICALLY PROVIDED BY KNIGHT WALL SYSTEMS. ALL IMPLIED WARRANTIES INCLUDING THOSE OF MERCHANTABILITY AND FITNESS FOR A PARTICULAR PURPOSE ARE EXPRESSLY EXCLUDED. No freedom from any patent owned by Knight Wall Systems or others is to be inferred. Because use conditions and applicable laws may differ from one location to another and may change with time, Customer is responsible for determining whether products and the information in this document are appropriate for Customer's use. They are not guaranteed in any way by the Knight Wall Systems, Inc. since building design, engineering, and construction, including workmanship and materials are beyond the control of the manufacturer. The information provided here is subject to change without notice.

All content included on this document is and shall continue to be the property of Knight Wall Systems, Inc. or its content suppliers, and is protected under applicable copyright, trademark, and other proprietary rights. KNIGHT WALL SYSTEMS, the Knight Wall Systems design mark, MFI, THERMABRACKET, THERMASTOP, and FORMED TO PROTECT WHAT MATTERS MOST are trademarks of Knight Wall Systems, Inc. US Patent Nos. 8429866, 8973334, 9677268, 9732518, 98526655, D963894, 11299891, 11286676, and others are registered and pending patents of Knight Wall Systems, Inc. These lists are not exhaustive and Knight Wall Systems, Inc. does not waive its rights in regard to other intellectual property not listed.

© 2025 Knight Wall Systems, Inc. All rights reserved. 042325