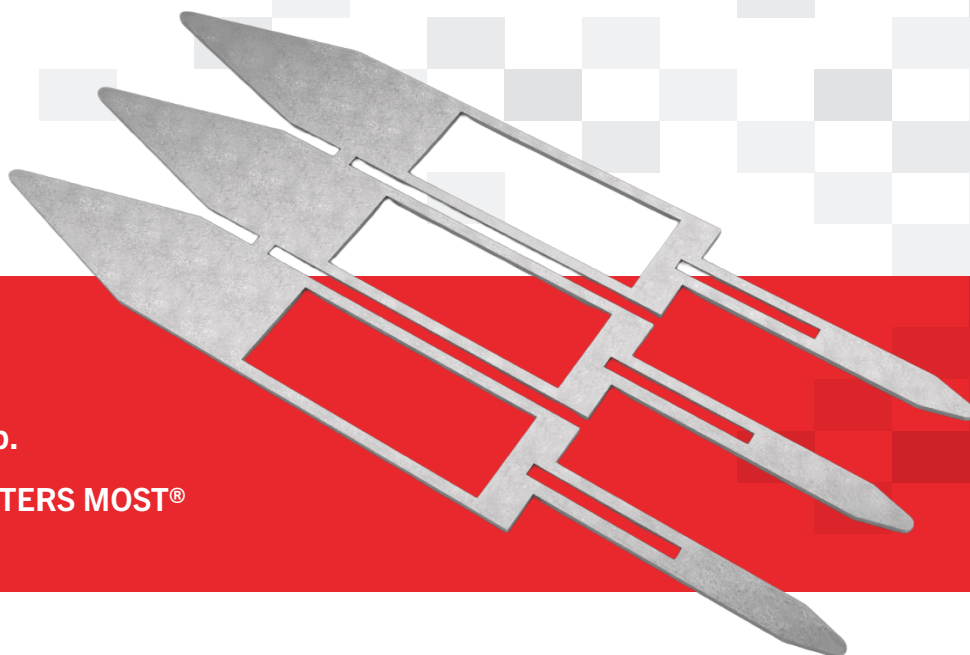




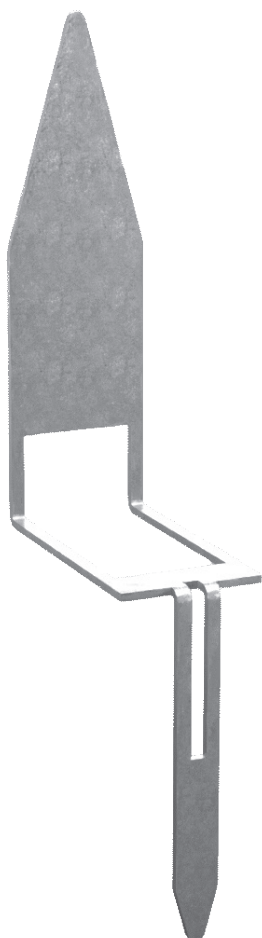
INSULKEY™

Flexible Insulation Retention Clip.

FORMED TO PROTECT WHAT MATTERS MOST®



Effortlessly secure insulation with INSULKEY™. Designed to preserve the building envelope, it installs seamlessly without causing penetrations. Non-combustible and versatile, it adapts to any THERMAZEE® and insulation depth combination—even when the girts exceed insulation depth. Its slide-in-place design ensures simple, fast installation without the need for special tools. Just bend to fit and enjoy insulation retention quickly and easily!



Material Properties

MATERIAL TYPE: ASTM A1046 ZM40 Steel

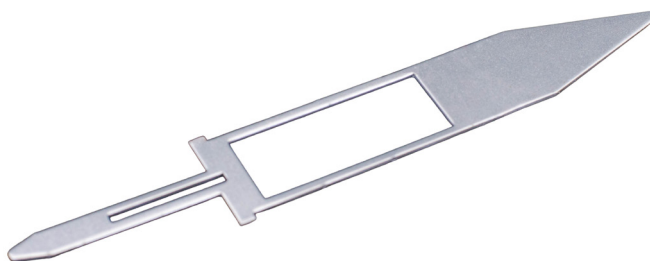
MIN. STEEL THICKNESS: 18 GA | 0.046 inches

YIELD STRESS, Fy: 50 KSI

AVAILABLE FINISHES: Standard Mill

SIZE: 6 in. x 0.81 in.

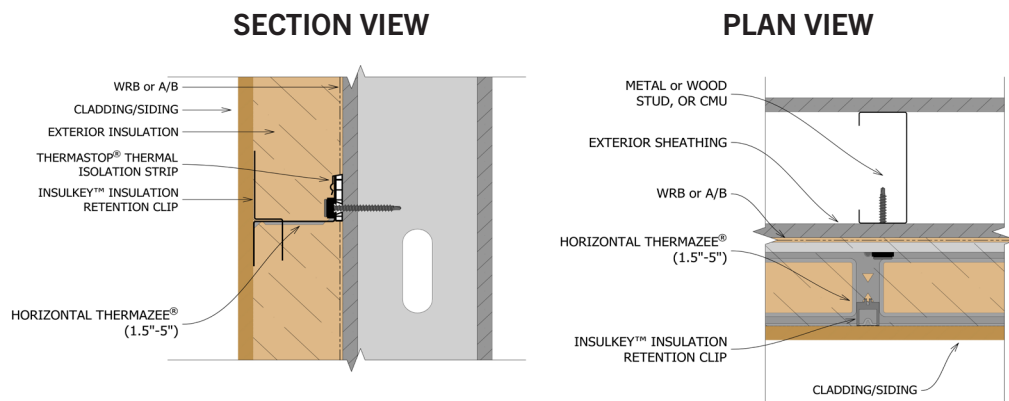
Contact KWS® for more information on lead times and pricing.



Advantages to INSULKEY™

- **Effortless Insulation Retention:** Designed with a slide-in-place mechanism for simple, fast installation.
- **Building Envelope Preservation:** Installs without causing penetrations, maintaining the integrity of the structure.
- **Non-Combustible Material:** Offers safety and reliability without adding combustibles to the wall assemblies.
- **Versatility:** Adapts to any THERMAZEE® and insulation depth combination, accommodating even girts that exceed insulation depth.
- **No Special Tools Required:** Bendable design ensures easy installation without the need for additional equipment.
- **Time-Saving Installation:** Streamlined design accelerates insulation projects, reducing labor time.
- **Enhanced Safety:** Non-combustible materials contribute to a secure and safe building environment.
- **Universal Adaptability:** Works seamlessly across different insulation setups, providing flexibility for various projects.
- **Simplified Process:** User-friendly design eliminates complexity, making it accessible for all levels of installers.
- **Cost Efficiency:** Reduces the need for specialized tools, cutting down on expenses.

INSULKEY™



NO EXPRESS WARRANTIES ARE GIVEN EXCEPT FOR ANY APPLICABLE WRITTEN WARRANTIES SPECIFICALLY PROVIDED BY KNIGHT WALL SYSTEMS. ALL IMPLIED WARRANTIES INCLUDING THOSE OF MERCHANTABILITY AND FITNESS FOR A PARTICULAR PURPOSE ARE EXPRESSLY EXCLUDED. No freedom from any patent owned by Knight Wall Systems or others is to be inferred. Because use conditions and applicable laws may differ from one location to another and may change with time, Customer is responsible for determining whether products and the information in this document are appropriate for Customer's use.

All content included on this site is and shall continue to be the property of Knight Wall Systems, Inc. or its content suppliers, and is protected under applicable copyright, trademark, and other proprietary rights. ANKIT, CI, CI-GIRT, KNIGHT WALL SYSTEMS, the Knight Wall Systems design mark, MFI, PANELRAIL, THERMABRACKET, THERMASTOP, THERMAZEE, and FORMED TO PROTECT WHAT MATTERS MOST are trademarks of Knight Wall Systems, Inc. US Patent Nos. 8429866, 8973334, 9677268, 9732518, 98526655, D963894, 11299891, 11286676, and others are registered and pending patents of Knight Wall Systems, Inc. These lists are not exhaustive and Knight Wall Systems, Inc. does not waive its rights in regard to other intellectual property not listed. © 2024 Knight Wall Systems, Inc. All rights reserved.



ALL KNIGHT WALL SYSTEMS
COMPONENTS ARE
MANUFACTURED IN THE USA.

2401 East 6th Street, Deer Park, WA 99006
www.knightwallsystems.com

1-855-597-9255 (KWS-WALL)
509-262-0104