

## APPLICATION

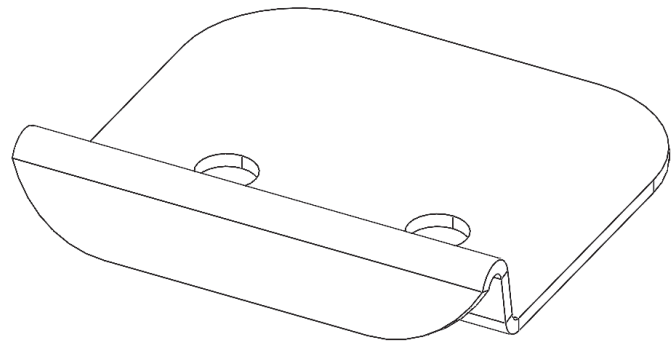
Façade designs and panel installation become simpler and more efficient with MOVEKLIP™ by facilitating floor deflection movement within cladding systems while resisting wind load. Its straightforward, installer-friendly design reduces errors and works with PANELRAIL® and various claddings like fiber cement, HPL, and metal panels. Requiring no specialized tools, bolts, or modifications, it simplifies the process and supports virtually unlimited floor movement. With connections that are entirely non-combustible, it ensures reliable fire resistance and safety for every project.

## HOW IT WORKS

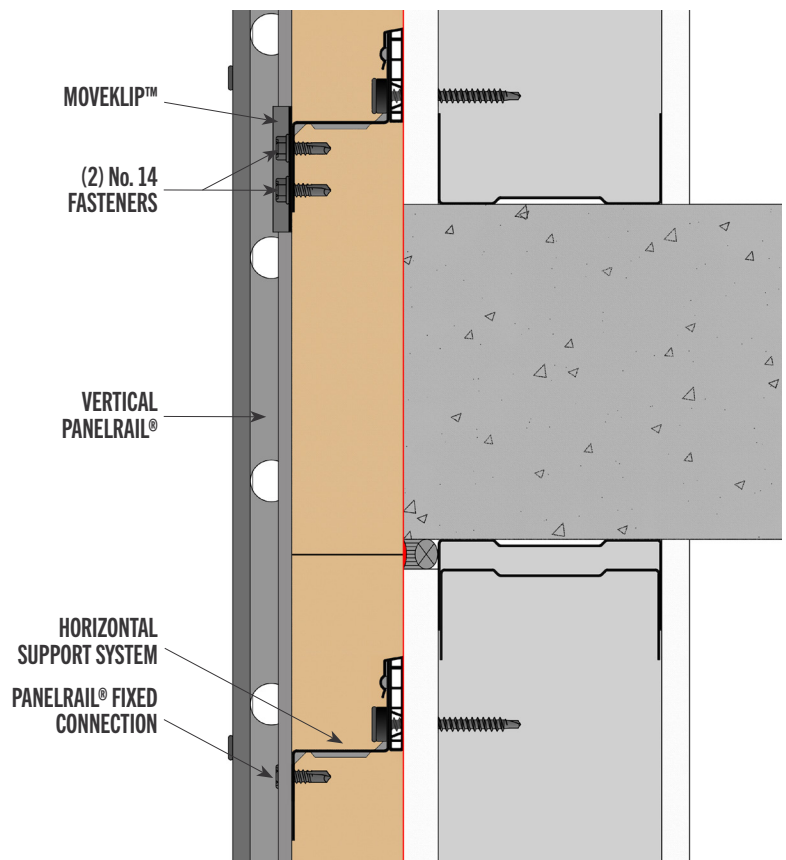
MOVEKLIP™ is designed for vertical framing to cross over floor line deflection joints on a multi-story structure by creating a sliding connection between vertical PANELRAIL® by KWS® and a horizontal subframing layer (such as THERMAZEE®, HCI-Girts or MFI® System). The vertical PANELRAIL® must be attached to the horizontal subframing with a traditional fixed connection on one side of the deflection joint while MOVEKLIP™ is used on the opposite side of the joint. This allows for the floor line movement to occur, while maintaining a static, stable, vertical cladding support system.

## LIMITATIONS

MOVEKLIP™ will not support gravity loads and only resists loads normal to the structure. It's design is intended for use only with PANELRAIL® by KWS®. The only limitation to the movement accommodated is if the PANELRAIL® disengages from the clip entirely. The maximum supported weight and distance past a floor line deflection joint will vary depending on project specific details including the weight of the cladding, wind pressure and total stand-off distance of the cladding support system.



## SECTION VIEW





# MOVEKLIP™

## FAÇADE FLOOR LINE DEFLECTION CLIP

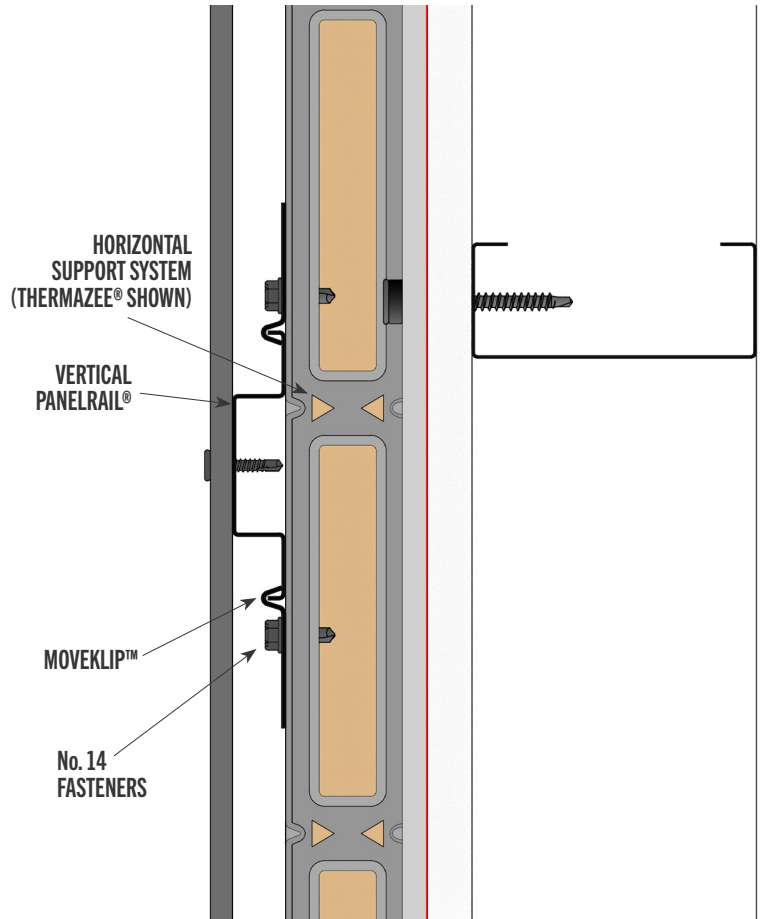
### MATERIAL PROPERTIES & OPTIONS

MATERIAL TYPE	ASTM A1046 ZM40 Steel	
DESIGN STEEL THICKNESS	16-GA	0.0579 inches
MIN. STEEL THICKNESS	16-GA	0.055 inches
YIELD STRESS, Fy	50 ksi	
AVAILABLE FINISHES	Standard Mill	
SIZE	2 in x 2 in	
SECUREMENT	Two No. 14 screws @ 0.88" OC	

All dimensions are nominal.

See system specific guide details for further information on design, detailing and installation.

### PLAN VIEW



NO EXPRESS WARRANTIES ARE GIVEN EXCEPT FOR ANY APPLICABLE WRITTEN WARRANTIES SPECIFICALLY PROVIDED BY KNIGHT WALL SYSTEMS®. ALL IMPLIED WARRANTIES INCLUDING THOSE OF MERCHANTABILITY AND FITNESS FOR A PARTICULAR PURPOSE ARE EXPRESSLY EXCLUDED. No freedom from any patent owned by KNIGHT WALL SYSTEMS® or others is to be inferred. Because use conditions and applicable laws may differ from one location to another and may change with time, Customer is responsible for determining whether products and the information in this document are appropriate for Customer's use. They are not guaranteed in any way by the Knight Wall Systems, Inc. since building design, engineering, and construction, including workmanship and materials are beyond the control of the manufacturer. The information provided here is subject to change without notice.

All content included on this document is and shall continue to be the property of Knight Wall Systems, Inc. or its content suppliers, and is protected under applicable copyright, trademark, and other proprietary rights. KNIGHT WALL SYSTEMS, the Knight Wall Systems design mark, MFI, THERMABRACKET, THERMASTOP, and FORMED TO PROTECT WHAT MATTERS MOST are trademarks of Knight Wall Systems, Inc. US Patent Nos. 8429866, 8973334, 9677268, 9732518, 98526655, D963894, 11299891, 11286676, and others are registered and pending patents of Knight Wall Systems, Inc. These lists are not exhaustive and Knight Wall Systems, Inc. does not waive its rights in regard to other intellectual property not listed.

© 2025 Knight Wall Systems, Inc. All rights reserved.